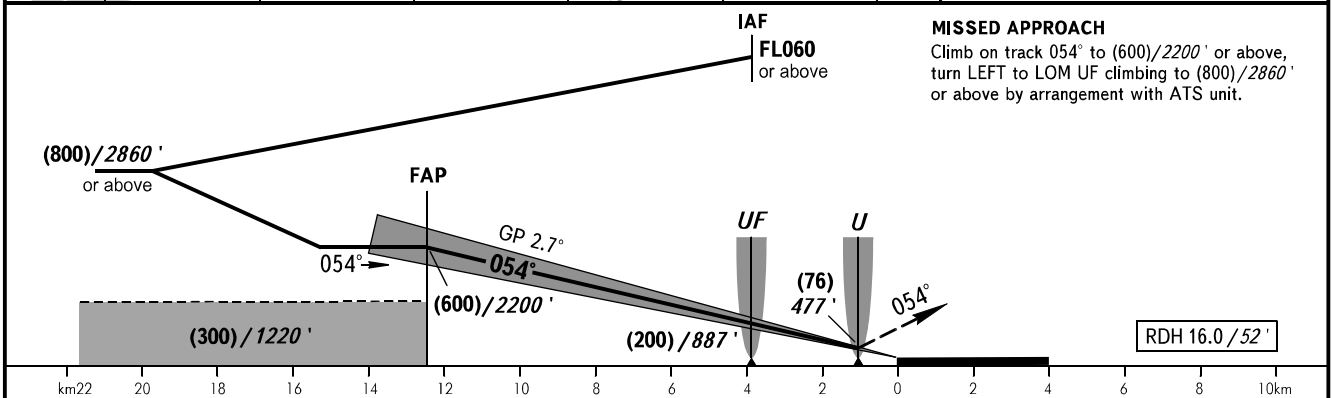
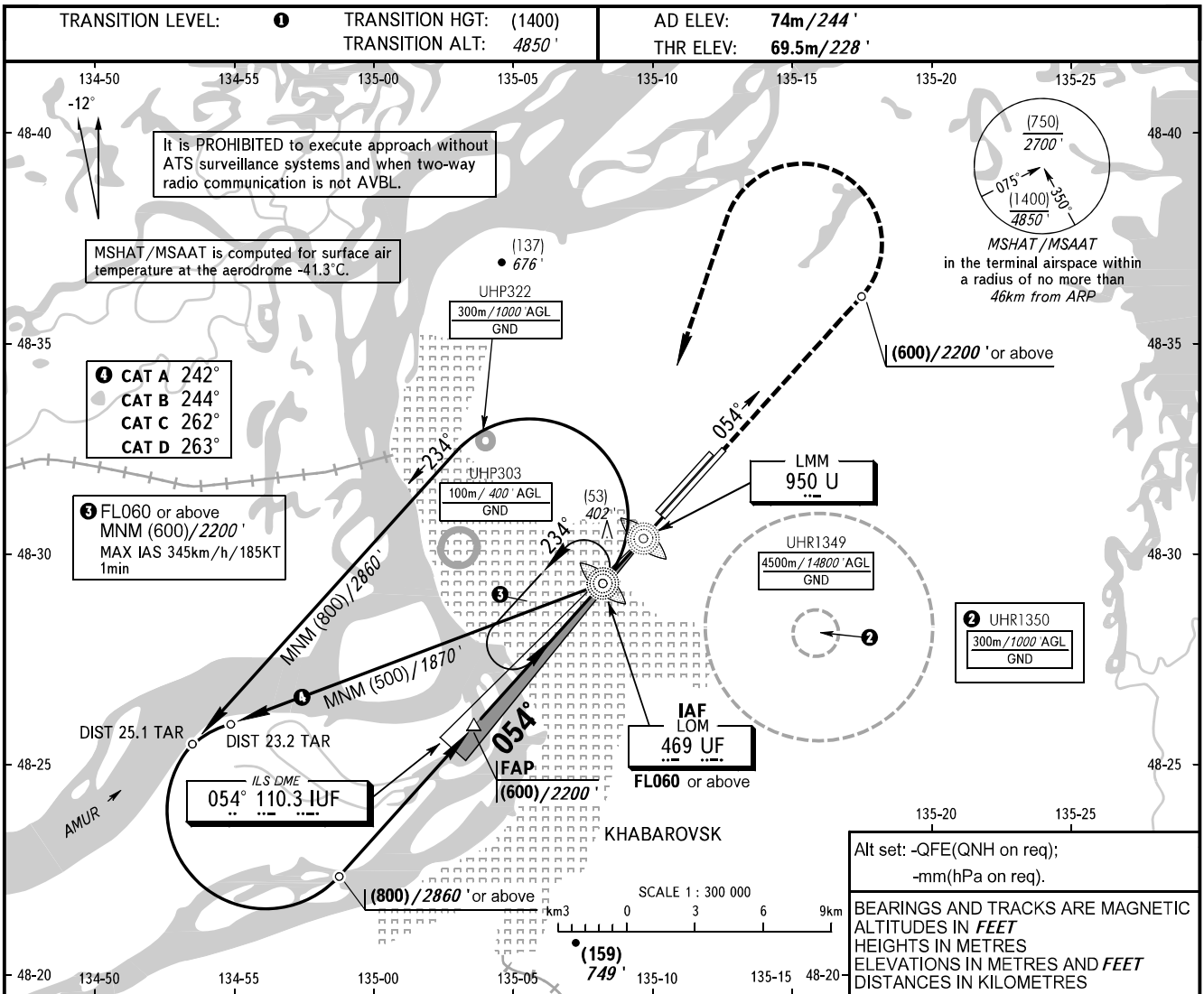


**INSTRUMENT  
APPROACH  
CHART - ICAO**

APPROACH	<b>125.200</b>
RADAR	<b>120.300</b>
PRECISION	<b>119.300</b>
GROUND	<b>121.800</b> By ATC

**KHABAROVSK, RUSSIA**  
NOVY  
ILS Y CAT I RWY 05R



OCA(H)		A	B	C	D
Straight-in Approach	<b>CAT I</b>	130(60) 427'	130(60) 427'	130(60) 427'	130(60) 427'

**1** TRANSITION LEVEL:  
- FL060 when QFE is 753mm mercury column (1004 hPa) or above;  
- FL070 when QFE is less than 753mm mercury column (1004 hPa).

**NOTE**  
Visual manoeuvring is PROHIBITED.

	km/h	150	180	210	240	270	300	330	360	390
		kt	81	97	113	130	146	162	178	194
RATE OF DESCENT	m/s	2.0	2.4	2.7	3.1	3.5	3.9	4.3	4.7	5.1
		ft/min	385	463	540	617	694	771	848	925

CHANGE: PROFILE VIEW