

STANDARD DEPARTURE CHART - INSTRUMENT (SID) - ICAO

TRANSITION ALTITUDE 6000 ft

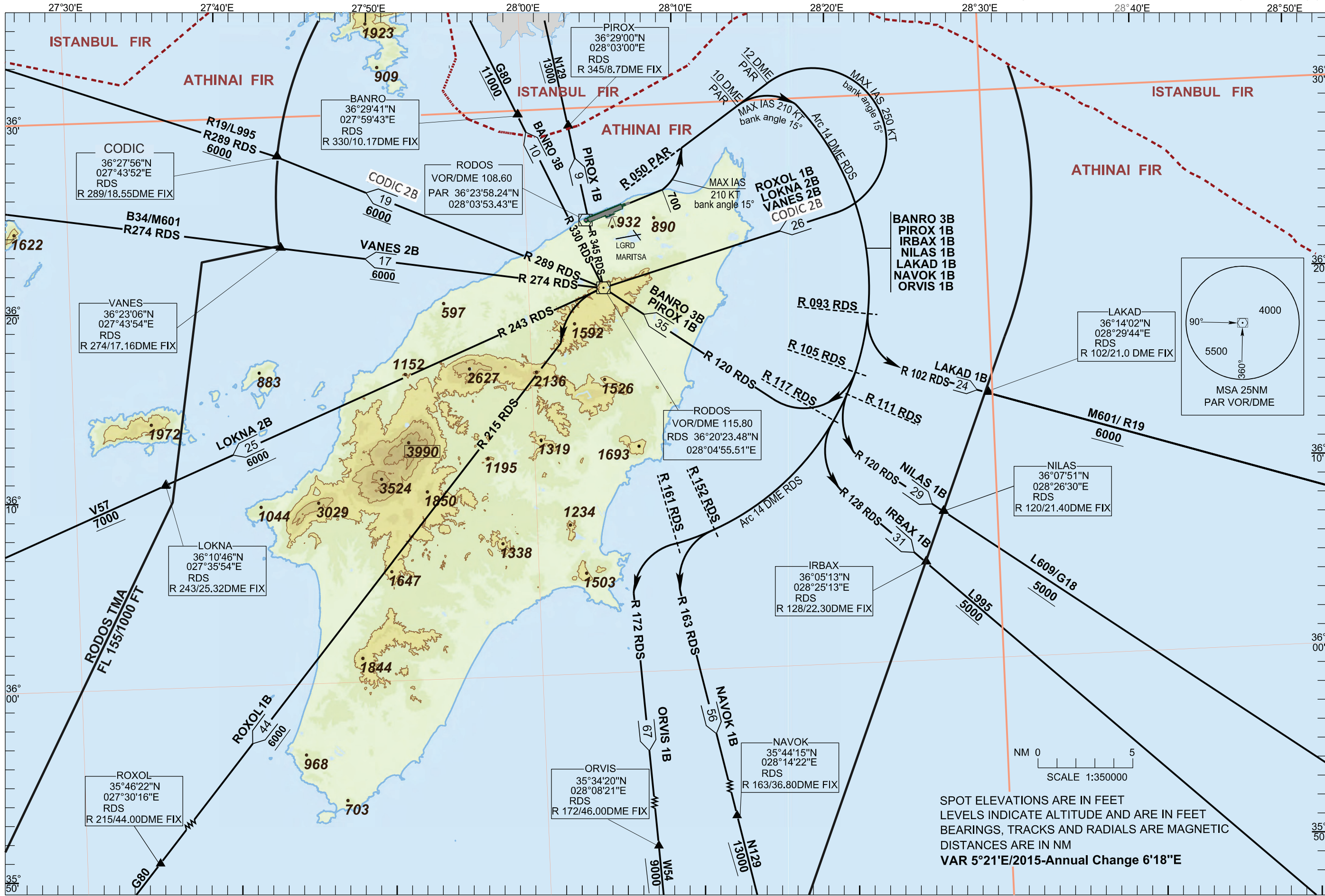
TWR 118.200 ATIS 126.350
APP 127.250 118.250
ACC 133.325 123.725

RODOS / DIAGORAS

RDS VOR/DME - PAR VOR/DME

RWY 06

CODIC 2B VANES 2B LOKNA 2B ROXOL 1B ORVIS 1B
NAVOK 1B IRBAX 1B NILAS 1B LAKAD 1B PIROX 1B BANRO 3B



CHANGE:
CODIC
POINT

RODOS / DIAGORAS AIRPORT**SIDs RWY 06 RDS VOR/DME – PAR VOR/DME****SIDs : CODIC 2B, VANES 2B, LOKNA 2B, ROXOL 1B, ORVIS 1B, NAVOK 1B, IRBAX 1B, NILAS 1B, LAKAD 1B, BANRO 3B, PIROX 1B****GENERAL:**

1. When for these SIDs an altitude higher than the transition altitude is designated, then ATC unit shall specify an equivalent flight level.
2. For these SIDs a minimum PDG (Procedure Design Gradient) of 4.8% (292 ft/nm) up to 700ft and then 3.3% (201 ft/nm) up to the minimum en-route altitude is required.

For SIDs: CODIC 2B, VANES 2B, LOKNA 2B and ROXOL 1B:

“Climb straight ahead to 700ft. Turn left (210 KT IAS MAX, Bank angle 15⁰), intercept and follow R 050 PAR to R 050 PAR / 12 DME. Fix, turn right (250 KT IAS MAX, Bank angle 15⁰), and proceed to RDS VOR/DME at 6000ft or above.” Thence ...”

CODIC 2B “...After RDS VOR/DME turn right, intercept and follow R 289 RDS to CODIC to join AWY R19 or L995.”

VANES 2B: “...After RDS VOR/DME turn right, intercept and follow R 274 RDS to VANES to join AWY B34 or M601.”

LOKNA 2B: “...After RDS VOR/DME intercept and follow R 243 RDS to LOKNA at 7000ft or above to join AWY V57.”

ROXOL 1B: “...After RDS VOR/DME turn left, intercept and follow R 215 RDS to ROXOL. Fix to join AWY G80.”

For SIDs: IRBAX 1B, NILAS 1B, LAKAD 1B, PIROX 1B, BANRO 3B, NAVOK 1B and ORVIS 1B:

“Climb straight ahead to 700ft. Turn left (210 KT IAS MAX, Bank angle 15⁰), intercept and follow R 050 PAR to R 050 PAR / 10 DME. Fix, turn right (210 KT IAS MAX, Bank angle 15⁰), intercept and follow Arc 14 DME RDS.” Thence...”

IRBAX 1B: “...Crossing R117 RDS turn left, intercept and follow R 128 RDS to IRBAX at 5000ft or above to join AWY L995.”

NILAS 1B: “...Crossing R 111 RDS turn left, intercept and follow R 120 RDS to NILAS at 5000ft or above to join AWY G18 or L609.”

LAKAD 1B: “...Crossing R 093 RDS turn left, intercept and follow R 102 RDS to LAKAD at 6000ft or above to join AWY R19 or M601.”

PIROX 1B: “...Crossing R 105 RDS turn right, intercept and follow R 120 RDS to RDS VOR/DME, turn right, intercept and follow R 345 RDS to PIROX at 13000ft or above to join AWY N129.”

BANRO 3B: “...Crossing R 105 RDS turn right, intercept and follow R 120 RDS to RDS VOR/DME, turn right, intercept and follow R 330 RDS to BANRO at 11000ft or above to join AWY G80.”

NAVOK 1B: “...Crossing R 152 RDS turn left, intercept and follow R 163 RDS to NAVOK at 13000ft or above to join AWY N129.”

ORVIS 1B: “...Crossing R161 RDS turn left, intercept and follow R 172 RDS to ORVIS at 9000ft or above to join AWY W54.”