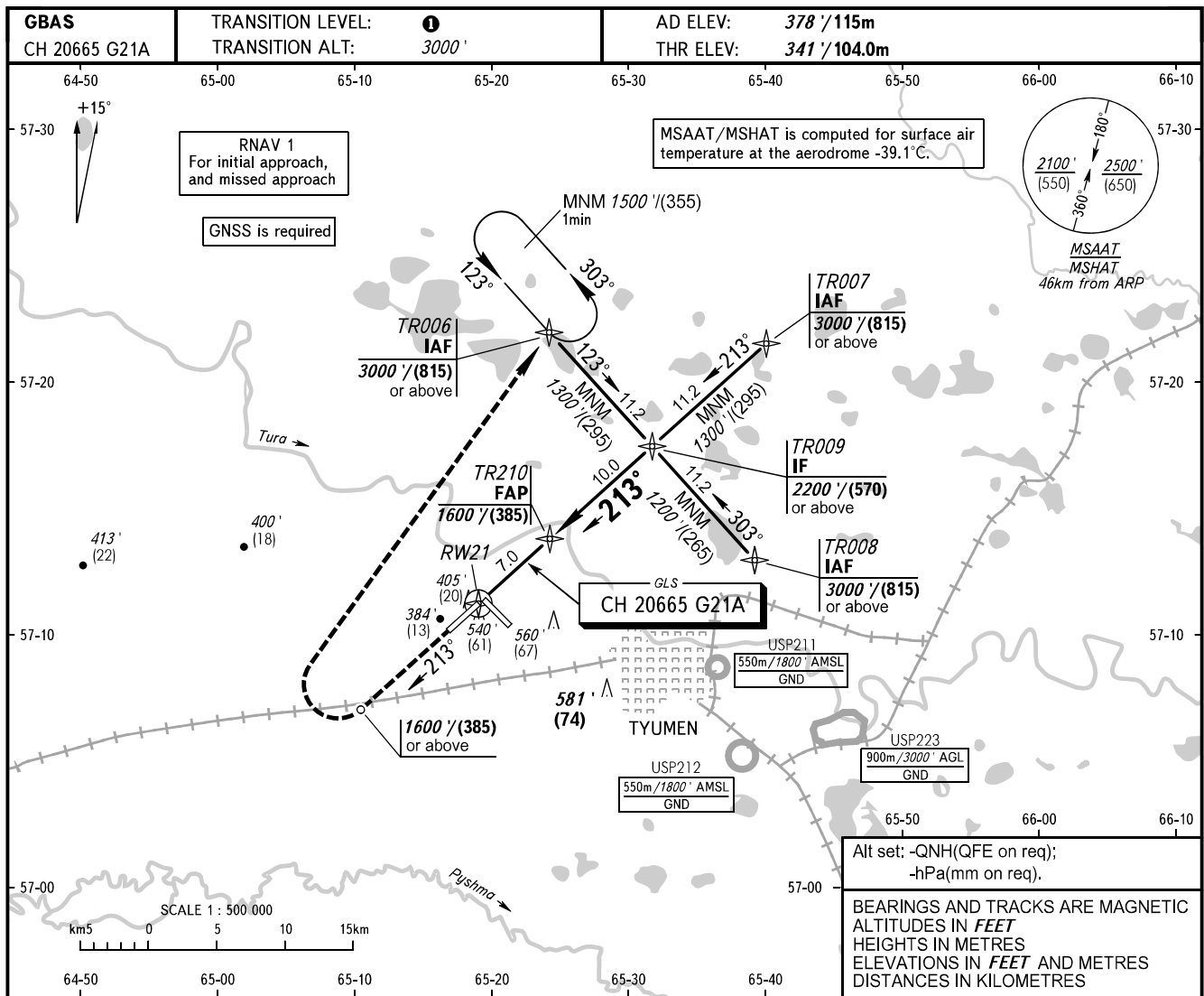


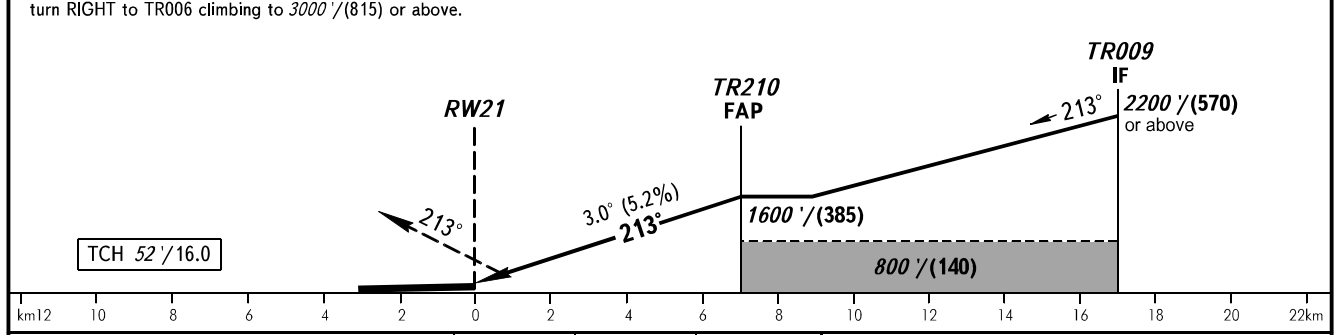
**INSTRUMENT
APPROACH
CHART - ICAO**

**TYUMEN, RUSSIA
ROSHCHINO
GLS RWY 21**

RADAR	126.100
START	118.200



MISSED APPROACH Climb on track 213° to 1600' / (385) or above, turn RIGHT to TR006 climbing to 3000' / (815) or above.	DIST to RWY21	2.0	4.0	6.0
	ALTITUDE/HEIGHT	736' / (121)	1079' / (225)	1423' / (330)



OCA(H)		A	B	C	D	1 TRANSITION LEVEL: - FL040 when QNH is 1013 hPa (760mm mercury column) or above; - FL050 when QNH is 977 hPa (733mm mercury column) or above, but less than 1013 hPa (760mm mercury column); - FL060 when QNH is less than 977 hPa (733mm mercury column).				
Straight-in Approach	CAT I	541' (200') (60)	548' (207') (63)	556' (215') (66)	566' (225') (69)					
		840' (460') (145)	870' (500') (155)	970' (600') (185)	1070' (690') (215)					
Circling										
GROUND SPEED	km/h	150	180	210	240	270	300	330	360	390
	kt	81	97	113	130	146	162	178	194	211
RATE OF DESCENT	m/s	2.2	2.6	3.1	3.5	3.9	4.4	4.8	5.2	5.7
	ft/min	433	512	610	689	768	866	945	1024	1122