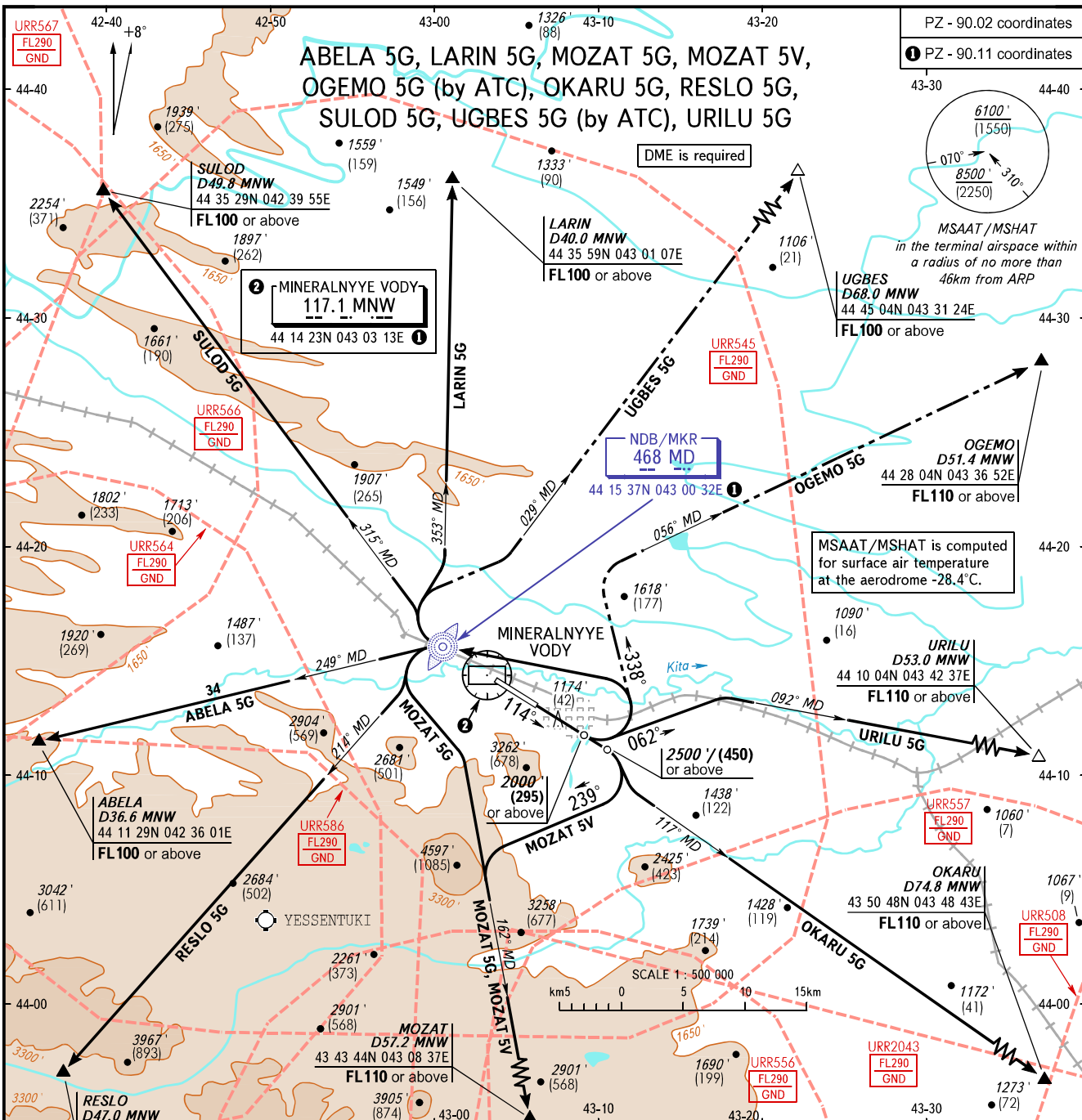


STANDARD DEPARTURE CHART
INSTRUMENT (SID) - ICAO

TRANSITION ALT: **9000'**
TRANSITION HGT: **(2430)**

MINERALNYYE VODY, RUSSIA
MINERALNYYE VODY
RWY 11



MINIMUM CLIMB GRADIENTS:

ABELA 5G, LARIN 5G, SULOD 5G, UGBES 5G:	5.4% up to 2600'/(480) due to obstacles;
MOZAT 5G:	5.4% up to 6100'/(1545) due to obstacles;
MOZAT 5V:	10.0% up to 4900'/(1180) due to obstacles, then 3.6% up to FL110 due to the airspace structure;
OGEMO 5G:	3.4% up to 2000'/(295) due to obstacles, 5.1% up to FL110 due to the airspace structure;
OKARU 5G:	4.2% up to 3000'/(600) due to obstacles, 4.4% up to FL110 due to the airspace structure;
RESLO 5G:	5.4% up to 2600'/(480) due to obstacles, then 3.9% up to FL120 due to the airspace structure;
URILU 5G:	3.4% up to 2000'/(295) due to obstacles, 6.1% up to FL110 due to the airspace structure.

START	128.000	NOTE:
RADAR	120.700	
APPROACH	119.300	
BEARINGS AND TRACKS ARE MAGNETIC ELEVATIONS IN FEET AND METRES ALTITUDES IN FEET HEIGHTS IN METRES DISTANCES IN KILOMETRES	Alt set: -QNH(QFE on req); -hPa(mm on req).	1. Turn before passing DER is PROHIBITED. 2. ABELA 5G, LARIN 5G, UGBES 5G are not AVBL, when URR545, URR564, URR566 are active. MOZAT 5G is not AVBL, when URR545, URR564, URR586, URR556, URR557, URR2043 are active. MOZAT 5V is not AVBL, when URR545, URR564, URR556, URR557, URR2043 are active. OGEMO 5G is not AVBL, when URR545 is active. OKARU 5G is not AVBL, when URR545, URR2043, URR558, URR508 are active. RESLO 5G is not AVBL, when URR545, URR564, URR567, URR586 are active. SULOD 5G is not AVBL, when URR545, URR564, URR566, URR567 are active. URILU 5G is not AVBL, when URR545, URR557 are active.