

STANDARD DEPARTURE CHART - INSTRUMENT

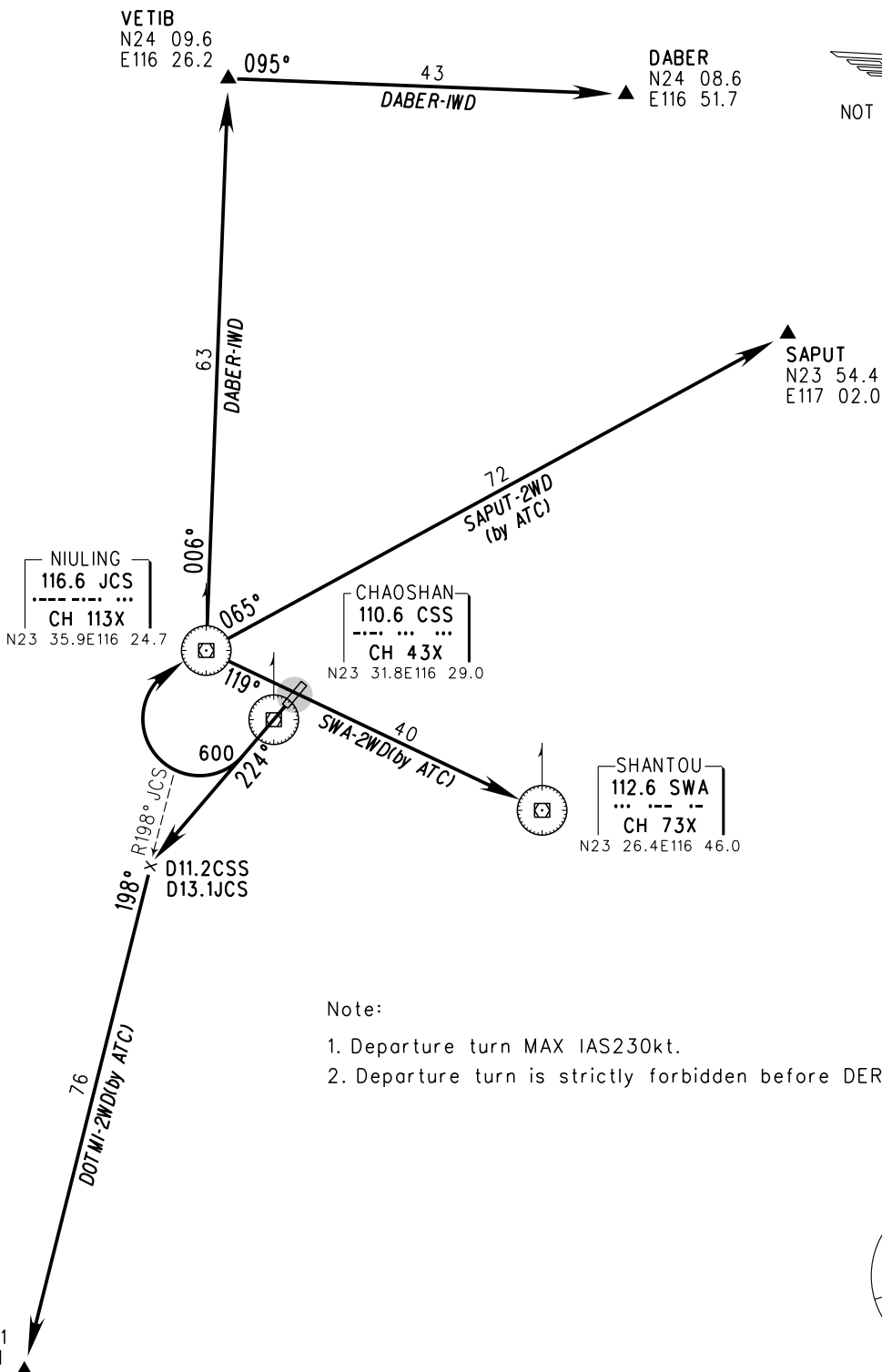
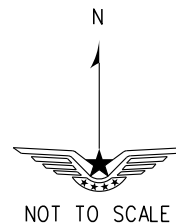
VAR 3.5° W

D-ATIS 126.65
APP 120.65 (123.05)
TWR 118.35 (130.0)

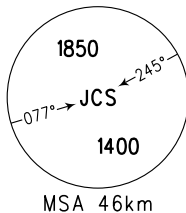
ZGOW JIEYANG/Chaoshan
RWY 22

BEARINGS ARE MAGNETIC.
ALTITUDES, ELEVATIONS
AND HEIGHTS IN METERS.
DME DISTANCES IN
NAUTICAL MILES.
DISTANCES IN KM.

TL 3300 (QNH ≥ 980hPa)
3600 (QNH < 980hPa)
TA 2700



- Note:
1. Departure turn MAX IAS 230kt.
 2. Departure turn is strictly forbidden before DER.



Changes: D-ATIS