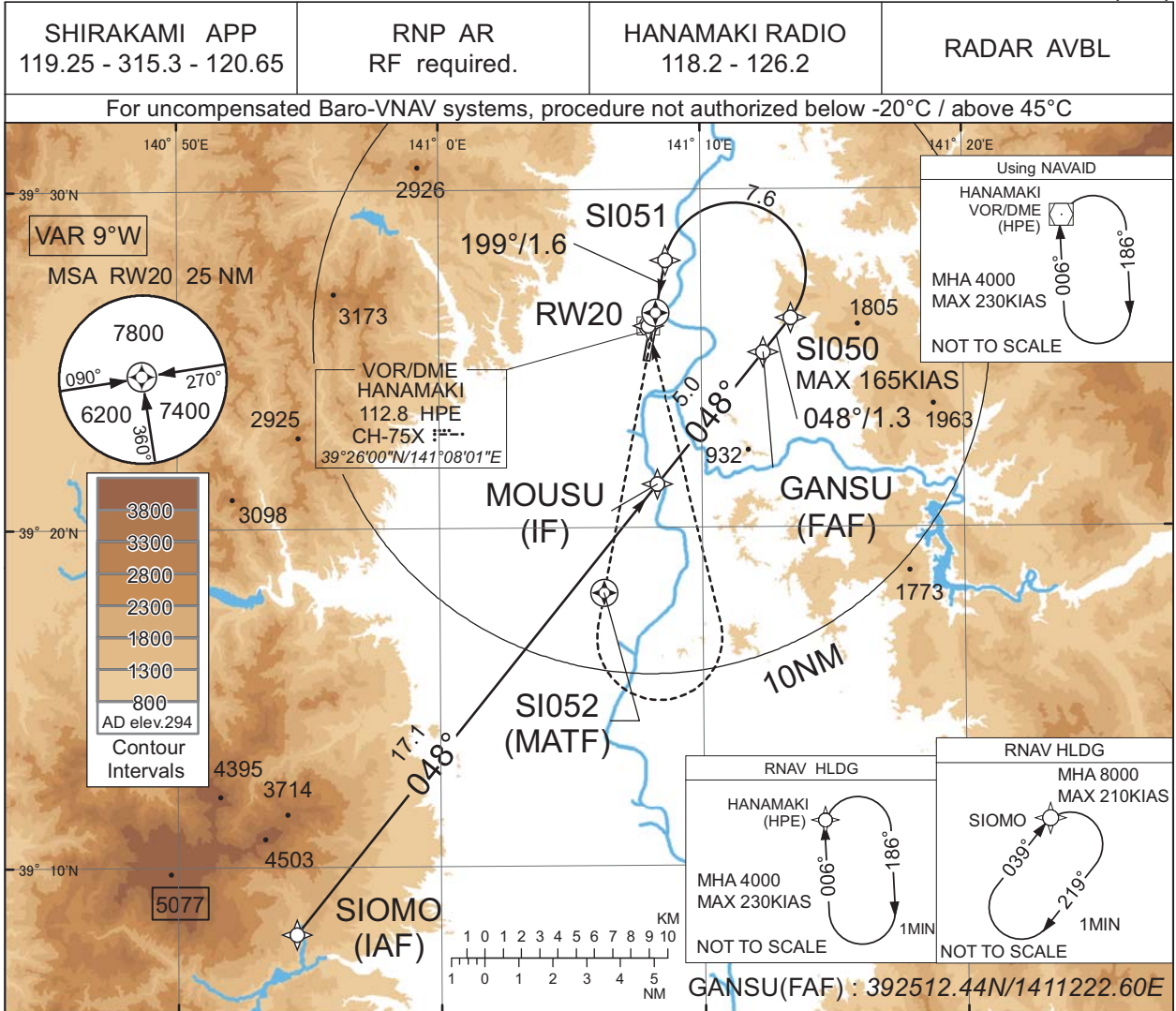


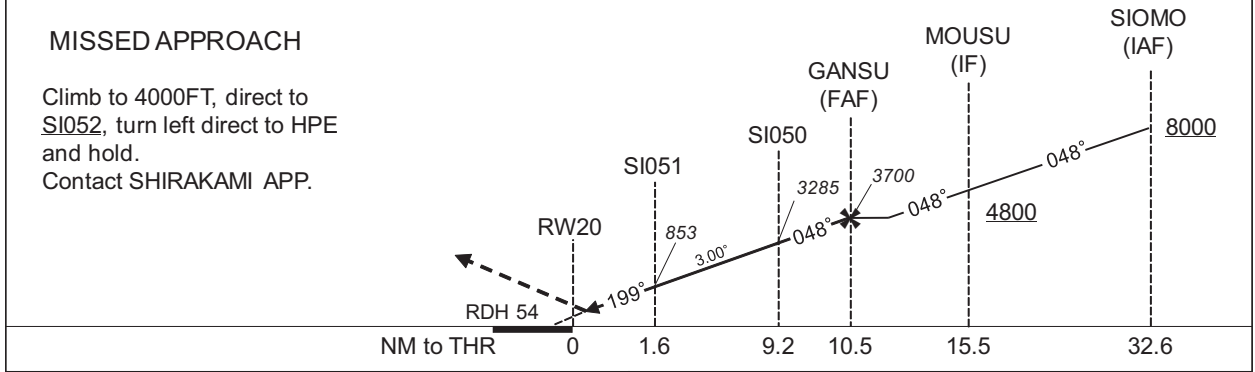
INSTRUMENT APPROACH CHART

RJSI / HANAMAKI

RNP Z RWY20(AR)



CHANGE : ATC call sign and FREQ. Description of RADAR Service. Missed APCH PROC.



MINIMA	THR elev. 298	AD elev. 294
CAT	RNP 0.30	
	DA(H)	RVR/CMV
A	-	-
B	-	-
C	607(309)	1000
D		1400

Authorization Required

INSTRUMENT APPROACH CHART

RJSI / HANAMAKI

RNP Z RWY20(AR)

Coding Table

Serial Number	Path Descriptor	Waypoint Identifier	Fly Over	Course °M(°T)	Magnetic Variation	Distance (NM)	Turn Direction	Altitude (FT)	Speed (KIAS)	VPA/ RDH (°/FT)	RNP Value
001	IF	SIOMO	-	-	-8.8	-	-	+8000	-	-	-
002	TF	MOUSU	-	048 (038.8)	-8.8	17.1	-	+4800	-	-	1.0
003	TF	GANSU	-	048 (038.9)	-8.8	5.0	-	3700	-	-	1.0
004	TF	SI050	-	048 (038.9)	-8.8	1.3	-	3285	-165	-3.00	0.3
005	RF Center: SIRF2 r=2.10NM	SI051	-	-	-8.8	7.6	L	853	-	-3.00	0.3
006	TF	RW20	Y	199 (190.7)	-8.8	1.6	-	352	-	-3.00/54	0.3
007	DF	SI052	Y	-	-8.8	-	-	-	-	-	1.0
008	DF	HPE	-	-	-8.8	-	L	4000	-	-	1.0

Path	Waypoint Identifier	Inbound Course °M(°T)	Magnetic Variation	Outbound Time (MIN)	Turn Direction	Minimum Altitude (FT)	Maximum Altitude (FT)	Speed (KIAS)	RNP Value
Hold	SIOMO	039 (030.1)	-8.8	1.0 (-14000)	R	8000	FL140	-210 (-14000)	1.0
Hold	HPE	006 (357.5)	-8.8	1.0 (-14000)	R	4000	FL140	-230 (-14000)	1.0

Waypoint Coordinates

Waypoint Identifier	Coordinates	RF Arc Center Identifier	Coordinates
SIOMO	390801.78N / 1405430.28E	SIRF2	392732.73N / 1411119.82E
MOUSU	392119.11N / 1410818.81E		
GANSU	392512.44N / 1411222.60E		
SI050	392613.23N / 1411326.21E		
SI051	392756.30N / 1410839.89E		
RW20	392623.24N / 1410817.11E		
SI052	391806.42N / 1410615.76E		
HPE	392600.09N / 1410800.60E		

CHANGE : PROC renamed.