

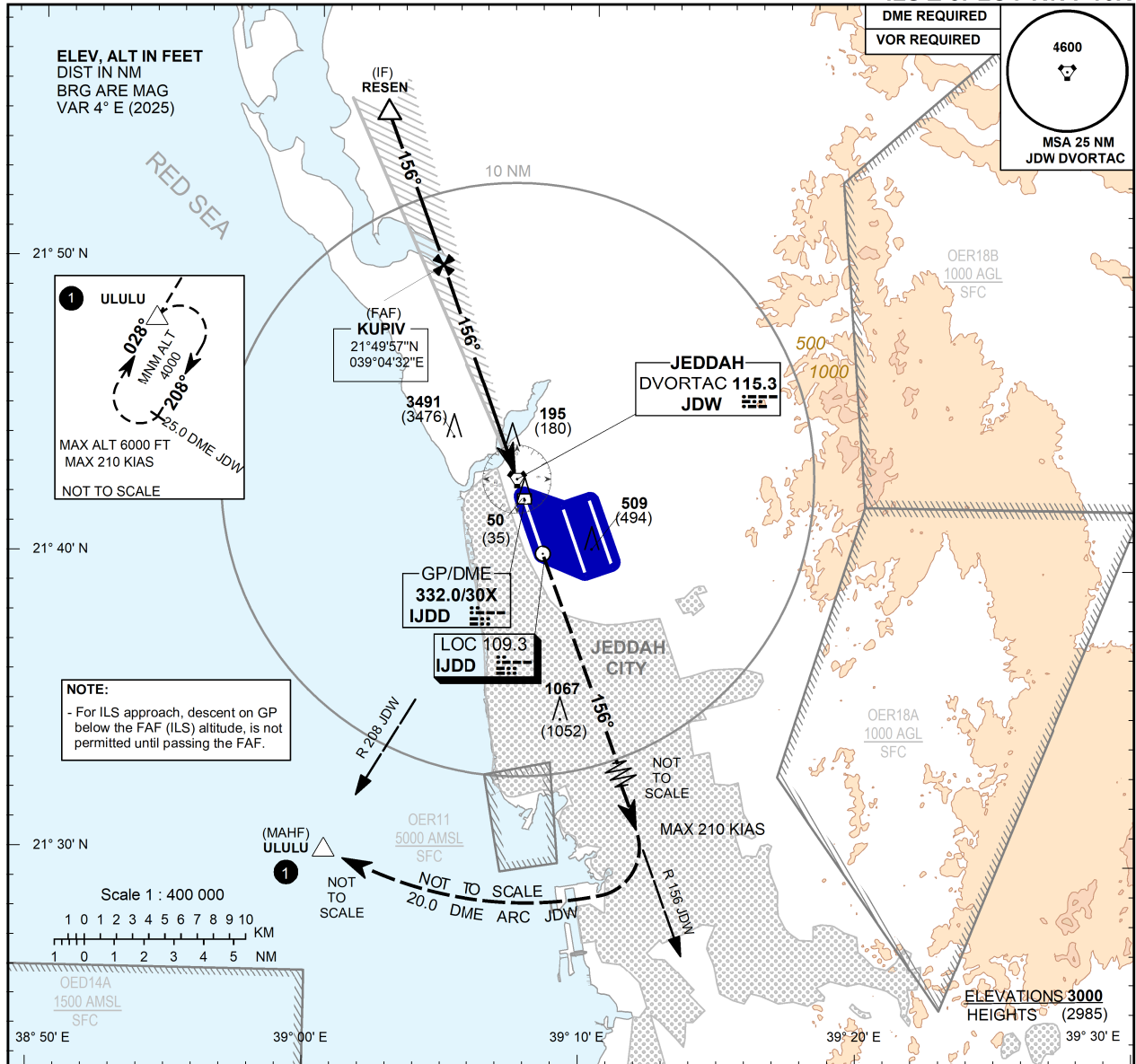
**INSTRUMENT
APPROACH
CHART - ICAO**

**AERODROME ELEV 50 FT
HEIGHTS RELATED TO
THR RWY 16R - ELEV 15 FT**

TWR 118.2(W) 118.3(W)
118.5(E) 124.3(E)
APP 123.8 124.0
UHF 345.6
ATIS 126.2 ARR 128.7 DEP

JEDDAH / Kling Abdulaziz intl (OEJN)

ILS Z or LOC RWY 16R



TRANSITION ALT 13000
TRANSITION LEVEL FL150

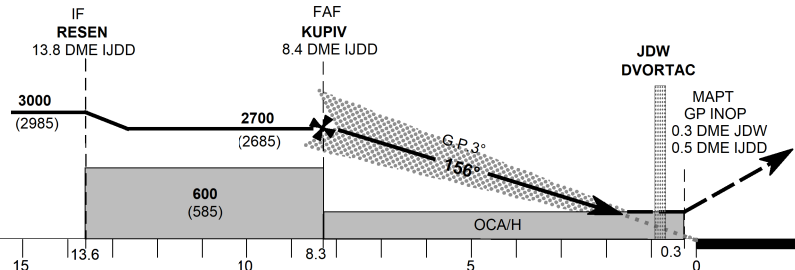
MISSED APPROACH

Climb on **RD1 156 JDW**
Then turn right via arc **20.0 DME JDW**
To **ULULU** and hold
Climb to **4000 FT** (MAX 210 KIAS)
Or as instructed by ATC

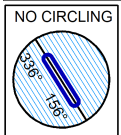
ILS RDH 52

THR ELEV 15

NM to/from **THR RWY 16R**



Straight-in Approach	CAT I	ACFT CAT	A					DL	GND SPEED	Knots	70	90	110	130	150	170	190
			B	C	D	220 (205)	min:s										
Straight-in Approach	GP INOP	OCA(H)															
		RVR(m)						550									
Circling	GP INOP	OCA(H)						460 (445)									
		RVR(m)						1200									
		OCA(H)						N/A									
		VIS(m)															



- RVR/VIS RELATED TO DA (H) MDA (H) = OCA (H)
- CIRCLING NOT AUTHORISED

CHANGE: IF, FAF distance and tables revised
AMDT: Original, 21 Jul 2016

ICAO PANS OPS