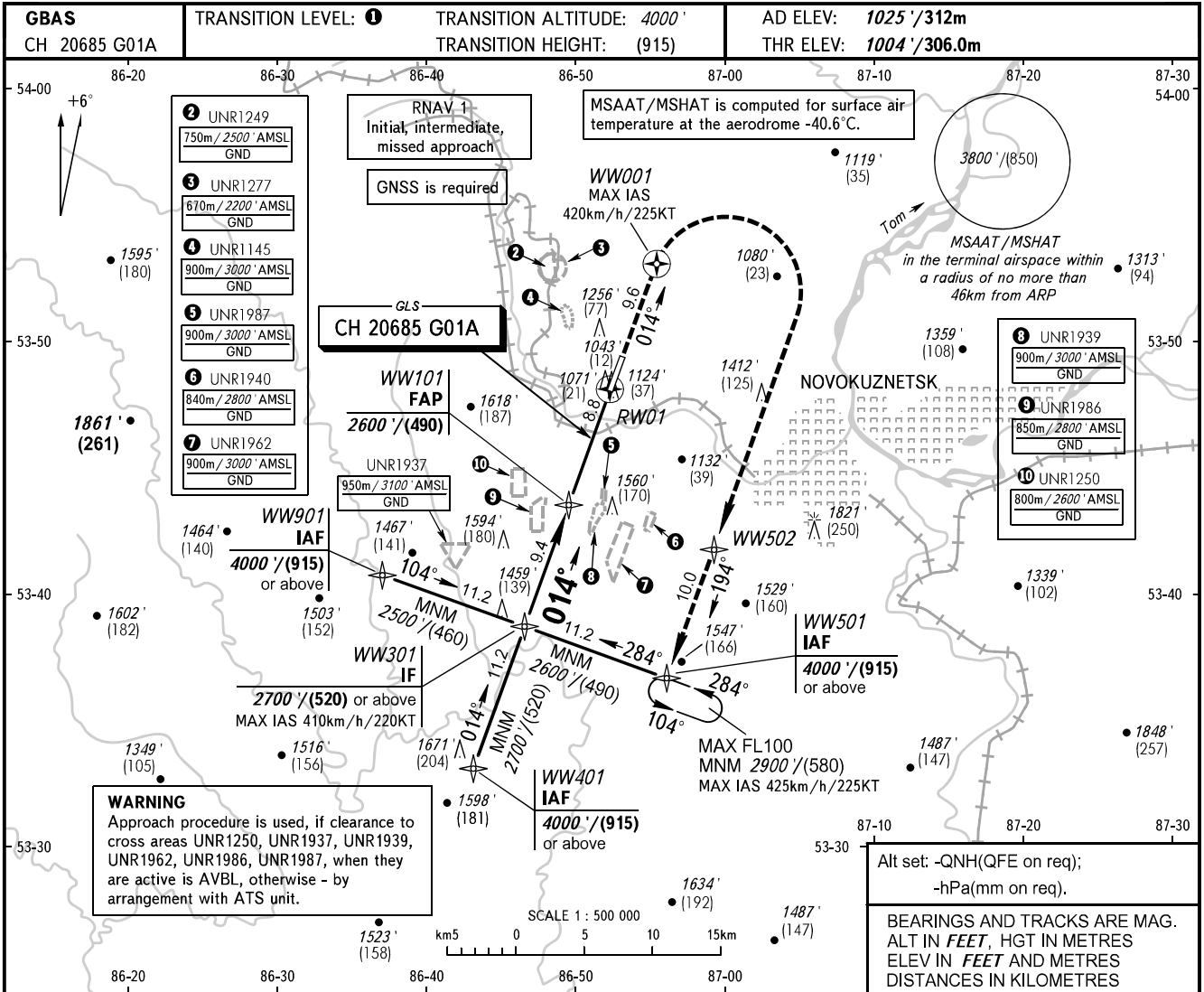


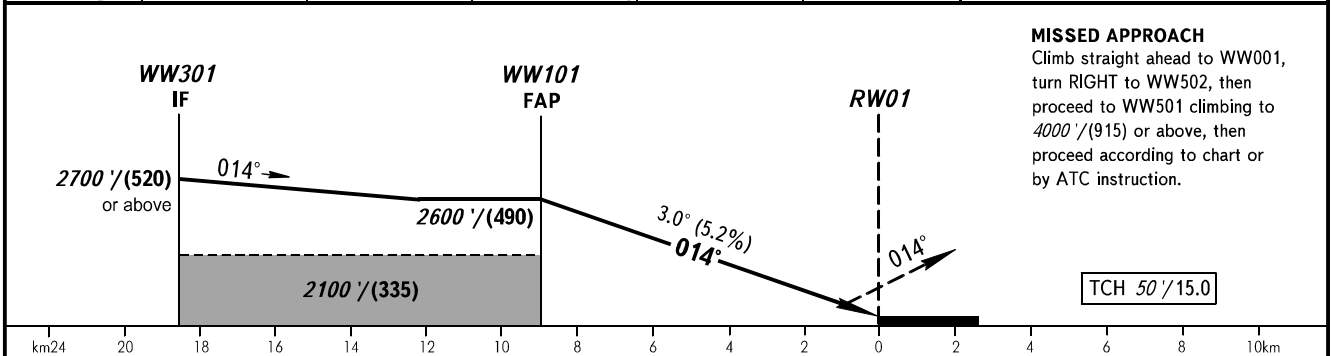
**INSTRUMENT
APPROACH
CHART - ICAO**

**NOVOKUZNETSK, RUSSIA
SPICHENKOVO
GLS RWY 01**

APPROACH **118.600**
START **121.200**



Alt set: -QNH(QFE on req);
-hPa(mm on req).
BEARINGS AND TRACKS ARE MAG.
ALT IN FEET, HGT IN METRES
ELEV IN FEET AND METRES
DISTANCES IN KILOMETRES



MISSED APPROACH
Climb straight ahead to WW001, turn RIGHT to WW502, then proceed to WW501 climbing to 4000'/(915) or above, then proceed according to chart or by ATC instruction.

OCA(H)		A	B	C	D				
Straight-in Approach	CAT I	1204' (200') (60)	1204' (200') (60)	1204' (200') (60)	1204' (200') (60)				
	Circling	1560' (530') (165)	1730' (710') (220)	1830' (810') (255)	1960' (940') (295)				
GROUND SPEED	km/h	150	180	210	240	270	300	330	360
	kt	81	97	113	130	146	162	178	195
RATE OF DESCENT	m/s	2.2	2.6	3.1	3.5	3.9	4.4	4.8	5.2
	ft/min	433	512	610	689	768	866	945	1024

1 TRANSITION LEVEL:
- FL050 when QNH is 1013 hPa (760mm mercury column) or above;
- FL060 when QNH is 977 hPa (733mm mercury column) or above, but less than 1013 hPa (760mm mercury column);
- FL070 when QNH is less than 977 hPa (733mm mercury column).

CHANGE: HLDG, OBST, ROD