

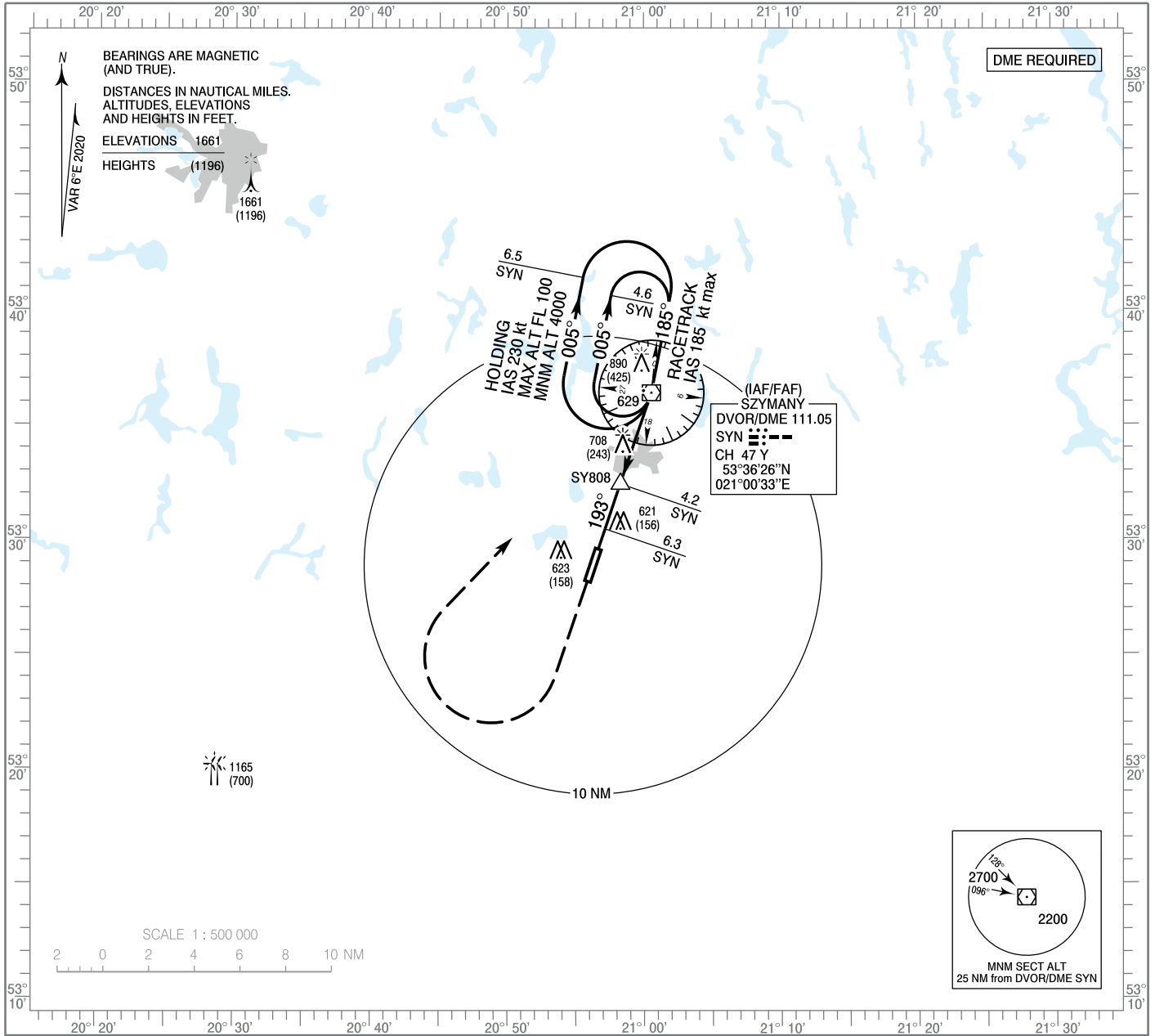
**INSTRUMENT
APPROACH
CHART - ICAO**

AERODROME ELEV 465 ft
THR RWY 19 ELEV 465 ft
HEIGHTS RELATED TO AD ELEV

Mazury TOWER 118.030
Mazury INFORMATION 118.030

**Olsztyn - Mazury
VOR y
RWY 19 (CAT A/B/C/D)**

Correction: Vertical reference datum changed. AD ELEV, THR ELEV, OCA (OCH) changed. Obstacles, tables updated. Editorial changes. Mazury RADIO FREQ withdrawn.

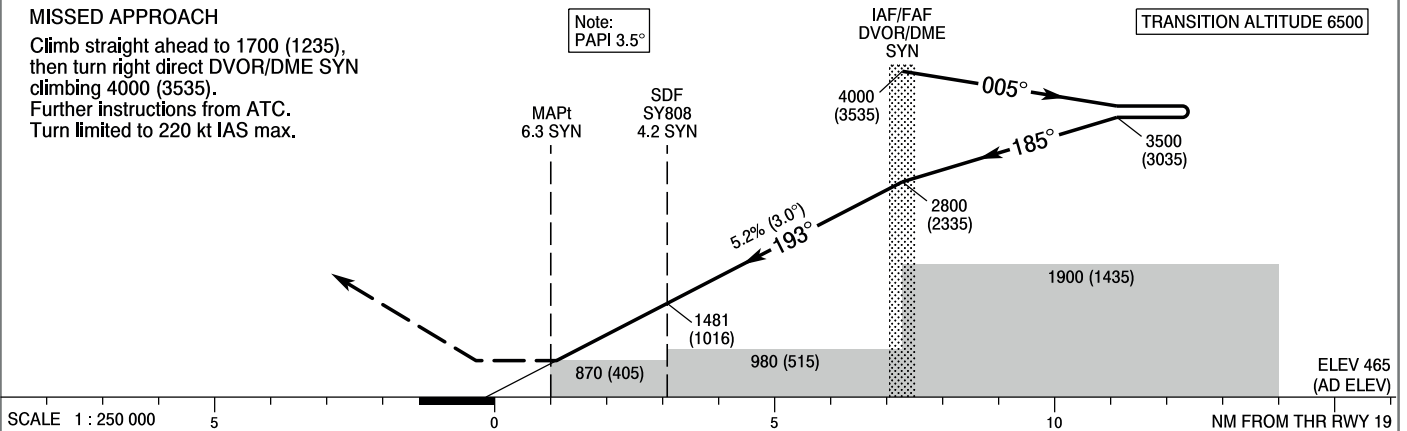


MISSED APPROACH

Climb straight ahead to 1700 (1235), then turn right direct DVOR/DME SYN climbing 4000 (3535). Further instructions from ATC. Turn limited to 220 kt IAS max.

Note: PAPI 3.5°

TRANSITION ALTITUDE 6500



SCALE 1 : 250 000 5 0 5 10 15 19 NM FROM THR RWY 19

OCA (OCH)					Distance FAF - MAPt 6.3							
Cat. of ACFT	A	B	C	D	Speed	kt	80	100	120	140	160	180
Straight - in	870 (405)	870 (405)	870 (405)	870 (405)	Time	min : s	4 : 42	3 : 46	3 : 08	2 : 41	2 : 21	2 : 06
	When stepdown fix not received				Rate of descent	ft / min	420	520	630	730	840	940
Circling	980 (515)	980 (515)	1060 (595)	1160 (695)	Final approach distance/altitude (height)							
	980 (515)	980 (515)	1060 (595)	1160 (695)	Distance	6	5	4	3	2	1	
					Altitude (height)	920 (455)	1230 (765)	1550 (1085)	1860 (1395)	2180 (1715)	2490 (2025)	

**INSTRUMENT
APPROACH
CHART - ICAO**

**Olsztyn - Mazury
VOR y
RWY 19 (CAT A/B/C/D)**

FIX / POINT	LATITUDE	LONGITUDE	FIX FORMATION	
IAF/FAF DVOR/DME SYN	53°36'25.7"N	021°00'33.2"E		
SDF SY808	53°32'27.7"N	020°58'16.6"E	198.87° GEO (193° MAG) DVOR SYN	4.20 NM DME SYN
MAPt	53°30'29.8"N	020°57'09.1"E	198.87° GEO (193° MAG) DVOR SYN	6.28 NM DME SYN
Final approach descent angle: 2.96°				