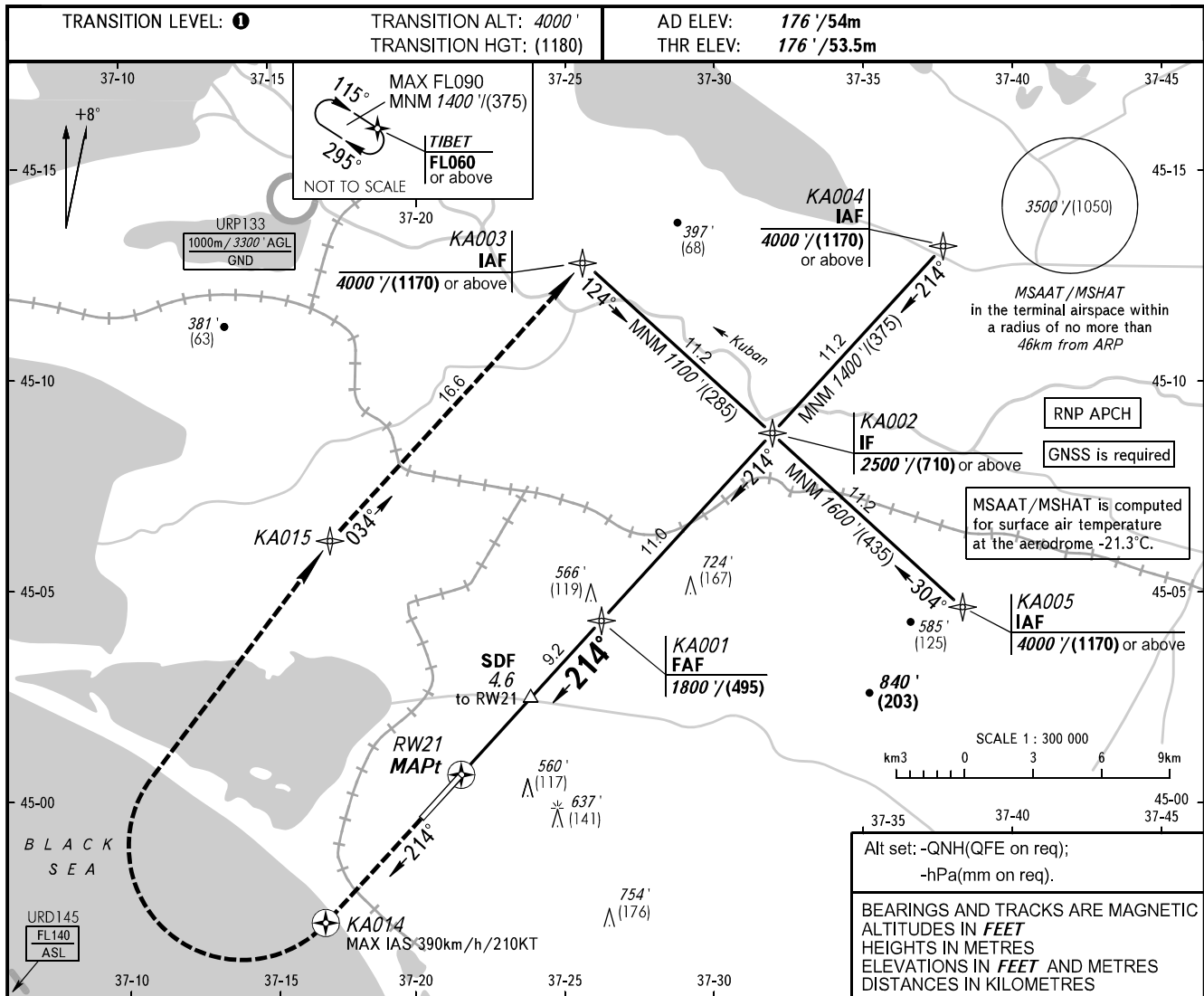


**INSTRUMENT
APPROACH
CHART - ICAO**

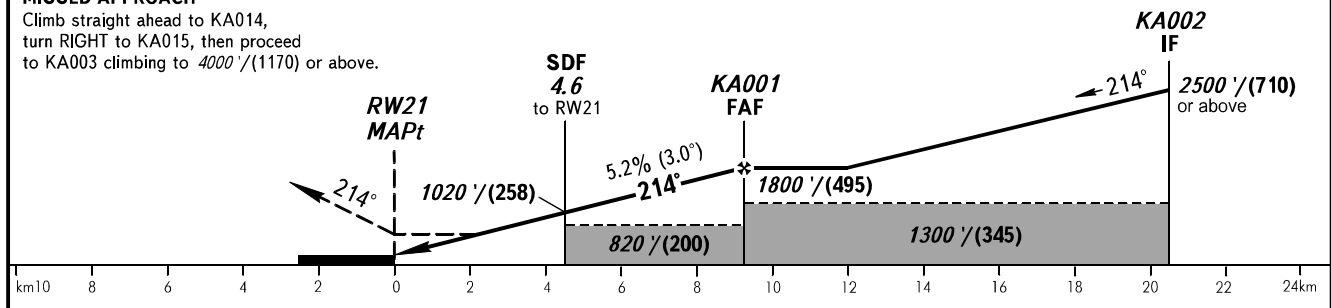
ANAPA RADAR 118.700
ANAPA TOWER 119.800

ANAPA, RUSSIA
VITYAZEVO
RNP RWY 21



MISSED APPROACH

Climb straight ahead to KA014, turn RIGHT to KA015, then proceed to KA003 climbing to 4000' (1170) or above.



OCA(H)		A	B	C	D						
Straight-in	LNAV	600' (420') (130)	600' (420') (130)	600' (420') (130)	600' (420') (130)						
	Approach										
Circling		860' (680') (210)	940' (760') (235)	1040' (860') (265)	1150' (980') (300)						
GROUND SPEED		km/h	150	180	210	240	270	300	330	360	390
		kt	81	97	113	130	146	162	178	194	211
RATE OF DESCENT		m/s	2.2	2.6	3.0	3.5	3.9	4.3	4.8	5.2	5.6
		ft/min	427	512	597	682	768	853	938	1024	1109

1 TRANSITION LEVEL:
- FL050 when QNH is 1013 hPa (760mm mercury column) or above;
- FL060 when QNH is 977 hPa (733mm mercury column) or above, but less than 1013 hPa (760mm mercury column);
- FL070 when QNH is less than 977 hPa (733mm mercury column).

WARNING
MAPt at RW21.
Timing not authorized for defining MAPt.