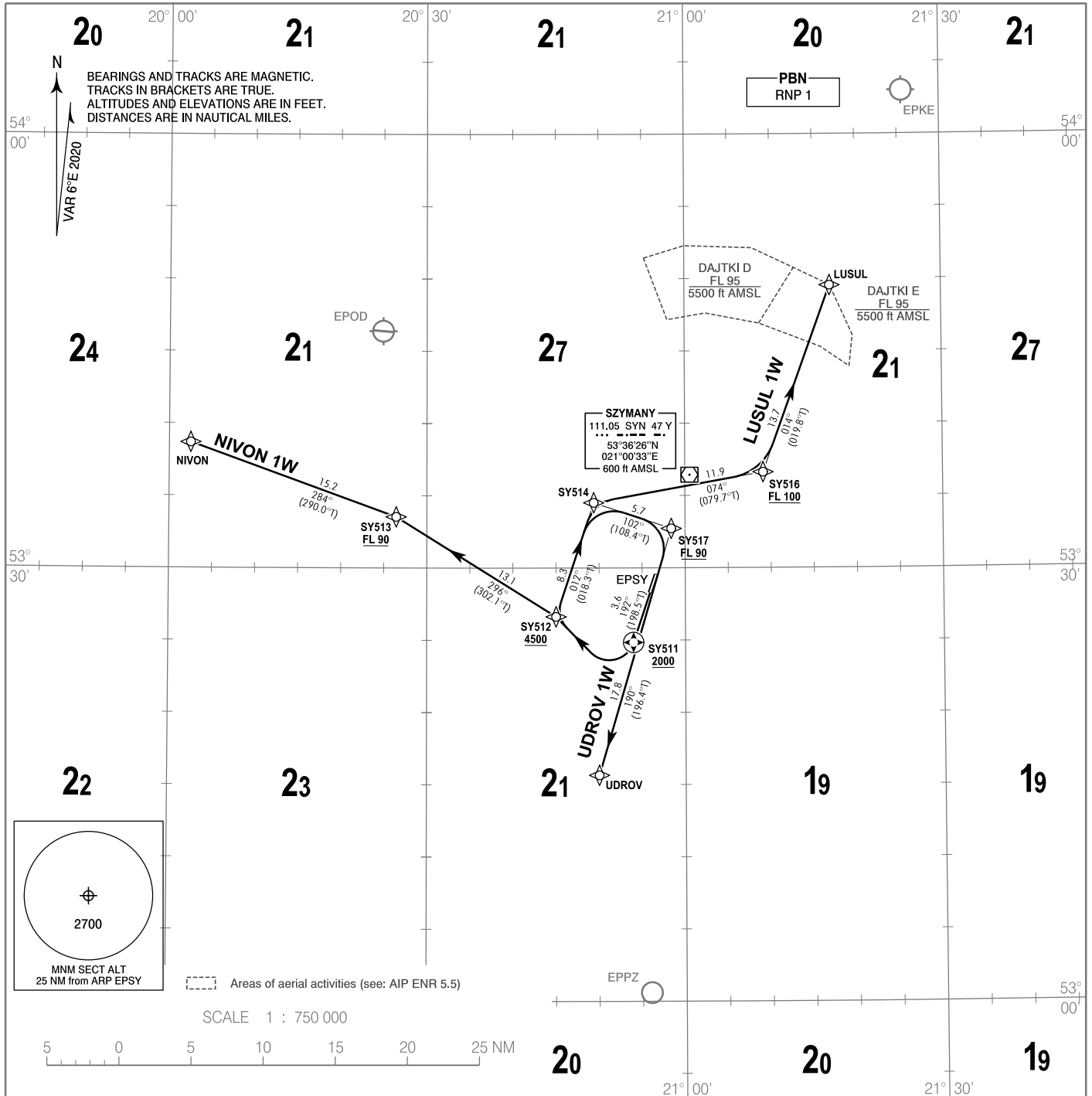


STANDARD DEPARTURE CHART  
INSTRUMENT (SID) - ICAO

TRANSITION ALTITUDE 6500

Mazury TOWER	118.030
Mazury INFORMATION	118.030
Mazury RADIO	118.030

LUSUL 1W NIVON 1W UDROV 1W



**STANDARD DEPARTURE CHART  
INSTRUMENT (SID) - ICAO**

**Olsztyn-Mazury  
RNP RWY 19  
LUSUL 1W NIVON 1W UDROV 1W**

**LUSUL 1W**

PDG 7% REQUIRED UP TO SY514

SEQUENCE NUMBER	PATH TERMINATOR	WAYPOINT IDENTIFIER	FLY - OVER	COURSE/TRACK °M (°T)	DISTANCE (NM)	TURN DIRECTION	ALTITUDE	SPEED (kt)	NAV SPEC
001	CF	SY511	Y	192 (198.5)	3.62	-	+2000 ft	-200	RNP 1
002	DF	SY512	-	-	-	R	+4500 ft	-220	RNP 1
003	TF	SY514	-	012 (018.3)	8.33	-	-	-	RNP 1
004	TF	SY516	-	074 (079.7)	11.93	-	+FL100	-	RNP 1
005	TF	LUSUL	-	014 (019.8)	13.75	-	-	-	RNP 1

**NIVON 1W**

PDG 7% REQUIRED UP TO SY513

SEQUENCE NUMBER	PATH TERMINATOR	WAYPOINT IDENTIFIER	FLY - OVER	COURSE/TRACK °M (°T)	DISTANCE (NM)	TURN DIRECTION	ALTITUDE	SPEED (kt)	NAV SPEC
001	CF	SY511	Y	192 (198.5)	3.62	-	+2000 ft	-200	RNP 1
002	DF	SY512	-	-	-	R	+4500 ft	-	RNP 1
003	TF	SY513	-	296 (302.1)	13.07	-	+FL90	-	RNP 1
004	TF	NIVON	-	284 (290.0)	15.16	-	-	-	RNP 1

**UDROV 1W**

PDG 7% REQUIRED UP TO SY517

SEQUENCE NUMBER	PATH TERMINATOR	WAYPOINT IDENTIFIER	FLY - OVER	COURSE/TRACK °M (°T)	DISTANCE (NM)	TURN DIRECTION	ALTITUDE	SPEED (kt)	NAV SPEC
001	CF	SY511	Y	192 (198.5)	3.62	-	+2000 ft	-200	RNP 1
002	DF	SY512	-	-	-	R	+4500 ft	-220	RNP 1
003	TF	SY514	-	012 (018.3)	8.33	-	-	-230	RNP 1
004	TF	SY517	-	102 (108.4)	5.66	-	+FL90	-230	RNP 1
005	TF	UDROV	-	190 (196.4)	17.82	-	-	-	RNP 1

WAYPOINT IDENTIFIER	COORDINATES	
DER19	53 28 16.4 N	020 55 54.2 E
LUSUL	53 49 31.0 N	021 16 59.0 E
NIVON	53 38 41.0 N	020 02 30.0 E
SY511	53 24 50.4 N	020 53 59.1 E
SY512	53 26 37.2 N	020 45 00.4 E
SY513	53 33 32.1 N	020 26 26.3 E
SY514	53 34 30.6 N	020 49 23.7 E
SY516	53 36 36.8 N	021 09 06.6 E
SY517	53 32 43.4 N	020 58 23.8 E
UDROV	53 15 39.0 N	020 50 00.0 E