

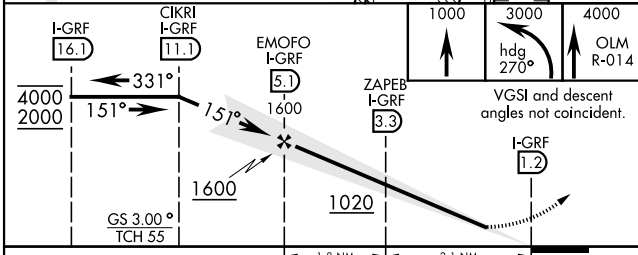
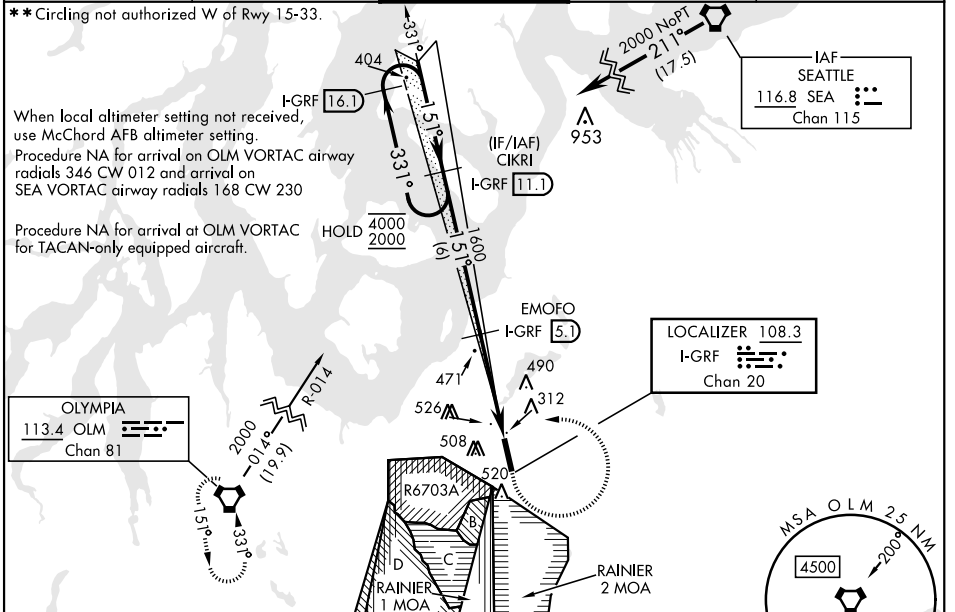
FORT LEWIS, WASHINGTON

# ILS or LOC RWY 15

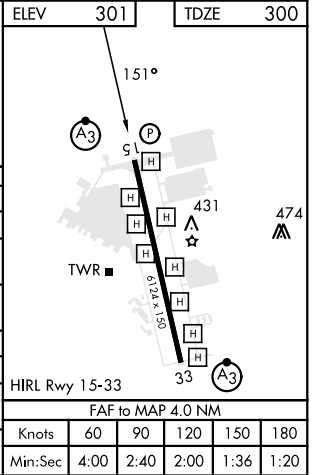
LOC I-GRF <b>108.3</b> Chan <b>20</b>	APCH CRS <b>151°</b>	Rwy Idg TDZE Arprt Elev <b>6124</b> <b>300</b> <b>301</b>	[USA]	GRAY AAF (JOINT BASE LEWIS MCCORD) (KGRF)
---	-------------------------	--	-------	---

RNAV1 - GPS from SEA VORTAC.  
 DME required for civil use. For non-RNAV aircraft, RADAR required from SEA VORTAC.  
 \* When ALS inop when using McChord AFB altimeter setting, increase LOC CAT C/D vis to RVR 55.  
 SSALR (A3)  
 MISSED APPROACH: Climb to 1000, then climbing left turn to 3000 on hdg 270° and OLM VORTAC R-014, then continue climb to 4000 on OLM R-014 to OLM and hold.

ATIS <b>124.65 306.2</b>	SEATTLE APP CON <b>120.1 290.9</b>	TOWER ★ <b>119.325 (CTAF) 256.8</b>	GND CON <b>121.9 290.2</b>	CLNC DEL <b>121.9 290.2</b>
-----------------------------	---------------------------------------	--	-------------------------------	--------------------------------



ELEV	301				TDZE	300			
CATEGORY	A		B		C		D		
S-ILS 15	500/24		200		(200-½)				
S-LOC 15	640/24	340	(400-½)		640/26	340	(400-½)		
CIRCLING **	840-1	539	(600-1)		840-1½	539	(600-1½)		
McCHORD FLD ALTIMETER SETTING MINIMUMS									
S-ILS 15	516/24		216		(300-½)				
S-LOC 15*	660/24	360	(400-½)		660/35	360	(400-¾)		
CIRCLING **	860-1	559	(600-1)		860-1½	559	(600-1½)		
					940-2	639	(700-2)		



FORT LEWIS, WASHINGTON 47°05'N-122°35'W GRAY AAF (JOINT BASE LEWIS MCCORD) (KGRF)  
 Amdt 8A 05DEC19

# ILS or LOC RWY 15

NW-1, 20 MAR 2025 to 17 APR 2025

NW-1, 20 MAR 2025 to 17 APR 2025

HIRL Rwy 15-33					
FAF to MAP 4.0 NM					
Knots	60	90	120	150	180
Min:Sec	4:00	2:40	2:00	1:36	1:20