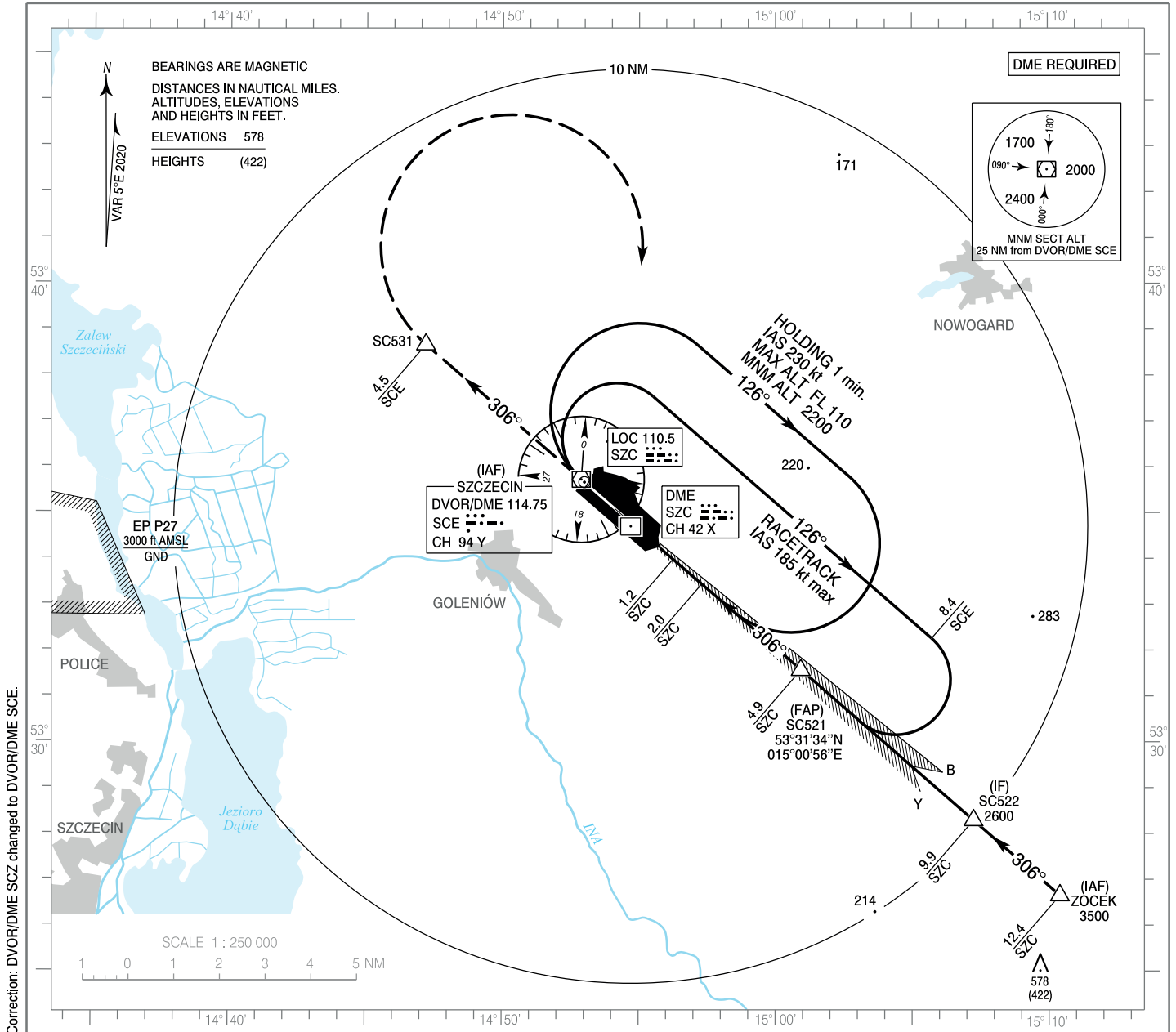


**INSTRUMENT
APPROACH
CHART - ICAO**

AERODROME ELEV 156 ft
THR RWY 31 ELEV 156 ft
HEIGHTS RELATED TO THR RWY 31

Szczecin TOWER 121.255
ATIS 132.130

**Szczecin - Goleniów
ILS or LOC
RWY 31 (CAT A/B/C/D)**

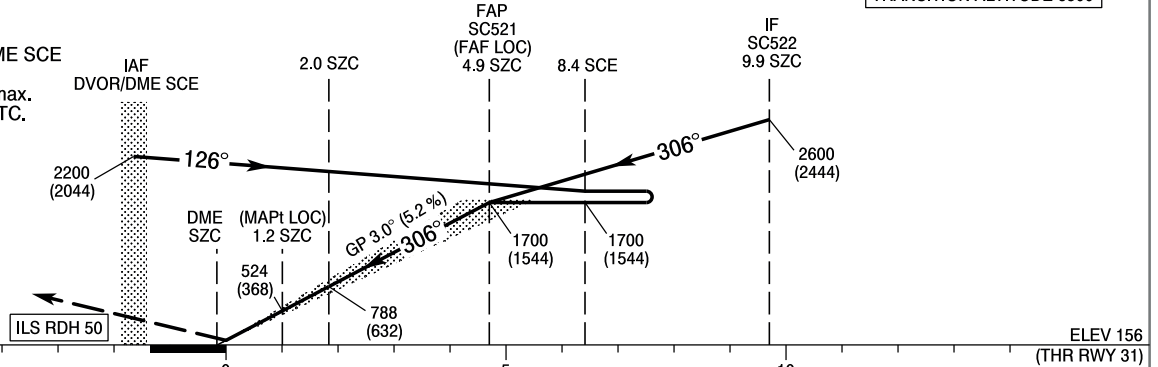


Correction: DVOR/DME SZC changed to DVOR/DME SCE.

MISSED APPROACH

Climb on RDL 306° SCE to SC531 (4.5 NM SCE), then turn right to DVOR/DME SCE climbing to 2200 (2044). Turn limited to 220 kt IAS max. Further instructions from ATC.

TRANSITION ALTITUDE 6500



SCALE 1 : 250 000

NM from THR RWY 31

Cat. of ACFT	OCA (OCH)				Distance FAF - MAPt 3.7 NM								
	A	B	C	D	Speed	kt	80	100	120	140	160	180	
Straight - in	Cat. I	342 (186)	354 (198)	362 (206)	373 (217)	Time	min : s	2 : 45	2 : 12	1 : 50	1 : 34	1 : 22	1 : 13
	LOC	570 (414)	570 (414)	570 (414)	570 (414)	Rate of descent	ft / min	420	530	640	740	850	960
Final approach distance/altitude (height)													
Circling (OCH AAL)	580 (424)	650 (494)	750 (594)	850 (694)	Distance		4	3	2				
					Altitude (height)		1430 (1274)	1110 (954)	790 (634)				

**INSTRUMENT
APPROACH
CHART - ICAO**

**Szczecin - Goleniów
ILS or LOC
RWY 31 (CAT A/B/C/D)**

FIX / POINT	LATITUDE	LONGITUDE	FIX FORMATION	
IAF DVOR/DME SCE	53°35'43.5"N	014°52'53.4"E		
IAF ZOCEK	53°26'39.3"N	015°10'24.1"E	310.87° GEO (306° MAG) LOC SZC	12.36 NM DME SZC
IF SC522	53°28'17.8"N	015°07'14.9"E	310.87° GEO (306° MAG) LOC SZC	9.86 NM DME SZC
FAP SC521 (FAF LOC)	53°31'34.3"N	015°00'55.9"E	310.87° GEO (306° MAG) LOC SZC	4.86 NM DME SZC
MAPt (LOC)	53°33'59.3"N	014°56'15.3"E	310.87° GEO (306° MAG) LOC SZC	1.17 NM DME SZC
SC531	53°38'39.6"N	014°47'10.9"E	310.89° GEO (306° MAG) DVOR SCE	4.49 NM DME SCE
Final approach descent angle: 3.00°				