

VOR/DME BTV 117.5 Chan 122	APP CRS 036°	Rwy Idg TDZE 334 Apt Elev 335
--	------------------------	---

VOR RWY 1

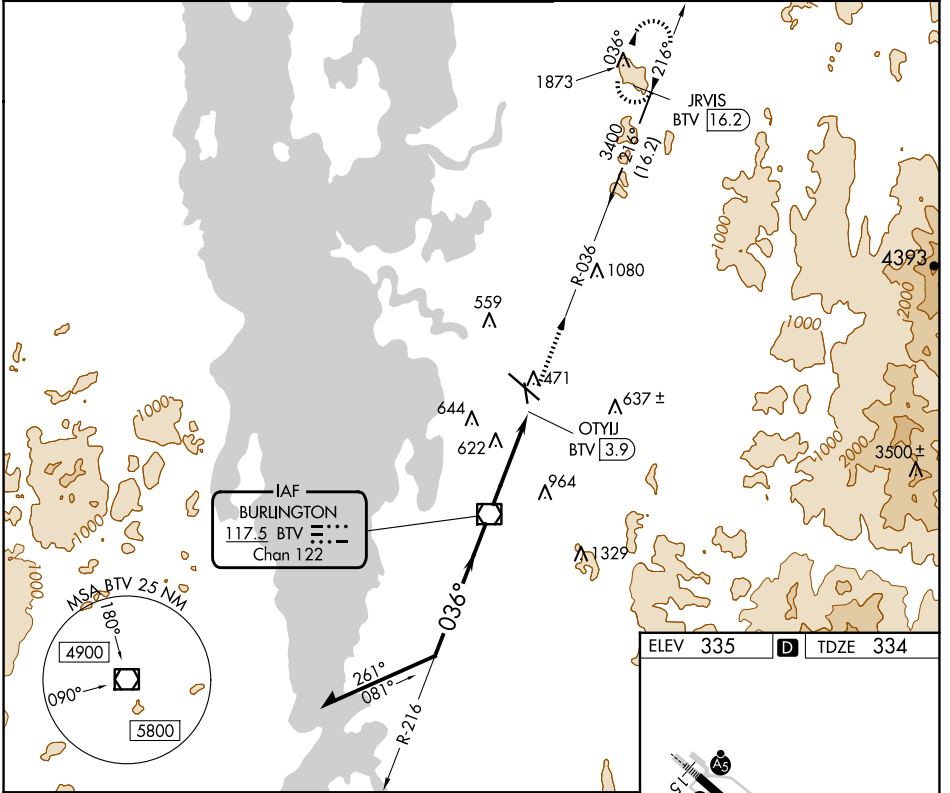
PATRICK LEAHY BURLINGTON INTL (BT'V)

DME required.

▼ Rwy 1 helicopter visibility reduction below 1 SM NA.
☁ -10°C Procedure NA at night.

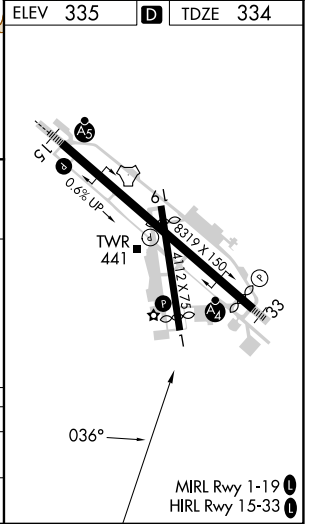
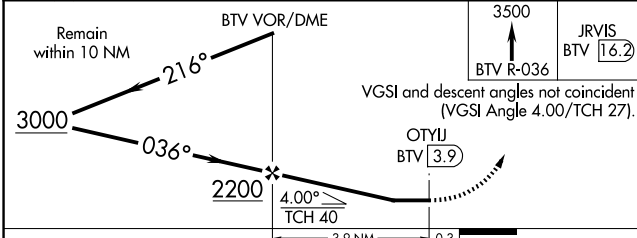
MISSED APPROACH: Climb to 3500 on BTV
 VOR/DME R-036 to JRVIS/BTV 16.2 DME and hold,
 continue to climb-in-hold 3500.

ATIS 123.8 269.9	BURLINGTON APP CON * 121.1 278.8	BURLINGTON TOWER * 118.3 (CTAF) 257.8	GND CON 126.3 348.6	CLNC DEL 119.15	UNICOM 122.95
----------------------------	--	---	-------------------------------	---------------------------	-------------------------



NE-1, 20 MAR 2025 to 17 APR 2025

NE-1, 20 MAR 2025 to 17 APR 2025



CATEGORY	A	B	C	D
S-1	880-1 546 (600-1)			NA
C CIRCLING	880-1 545 (600-1)			NA

VOR RWY 1