

(YELM5.YELM) 23334

YELM FIVE DEPARTURE

AL-645 (FAA)

OLYMPIA RGNL (OLM)
OLYMPIA, WASHINGTON



TATOOSH
112.2 TOU
Chan 59

**TOP ALTITUDE:
3000**

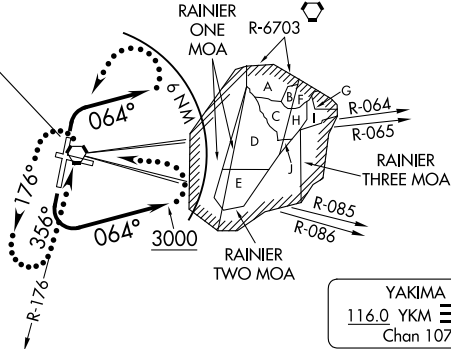
OLYMPIA TOWER *
124.4 (CTAF) 254.25
SEATTLE DEP CON
121.1 290.9

PAINÉ
110.6 PAE
Chan 43

SEATTLE
116.8 SEA
Chan 115

OLYMPIA
113.4 OLM
Chan 81

HOQUIAM
117.7 HQM
Chan 124



YAKIMA
116.0 YKM
Chan 107

NEWBERG
117.4 UBG
Chan 121

BATTLE GROUND
116.6 BTG
Chan 113

NW-1, 20 MAR 2025 to 17 APR 2025

NW-1, 20 MAR 2025 to 17 APR 2025

TAKEOFF MINIMUMS
Rwys 8, 26: NA- ATC.
Rwy 17: 300-2 with minimum climb of 210' per NM to 2200 or
standard with minimum climb of 720' per NM to 500.
Rwy 35: Standard.

NOTE: RADAR required.
NOTE: Chart not to scale.



DEPARTURE ROUTE DESCRIPTION

TAKEOFF RUNWAY 17: Turn left, climb heading 064° to 3000, thence. . . .
TAKEOFF RUNWAY 35: Turn right, climb heading 064°, maintain 3000 thence. . . .
. . . .for RADAR vectors on course and filed altitude.

LOST COMMUNICATIONS: If no contact with ATC within 6 NM of OLM VORTAC, or 2 minutes after departure for non-DME aircraft, turn left direct OLM VORTAC, continue climb in OLM VORTAC holding pattern to cross OLM VORTAC at or above R-086 CW R-064 4200 feet; R-065 CW R-085 7300 feet, continue climb on assigned route.

YELM FIVE DEPARTURE
(YELM5.YELM) 19JUL18

OLYMPIA, WASHINGTON
OLYMPIA RGNL (OLM)