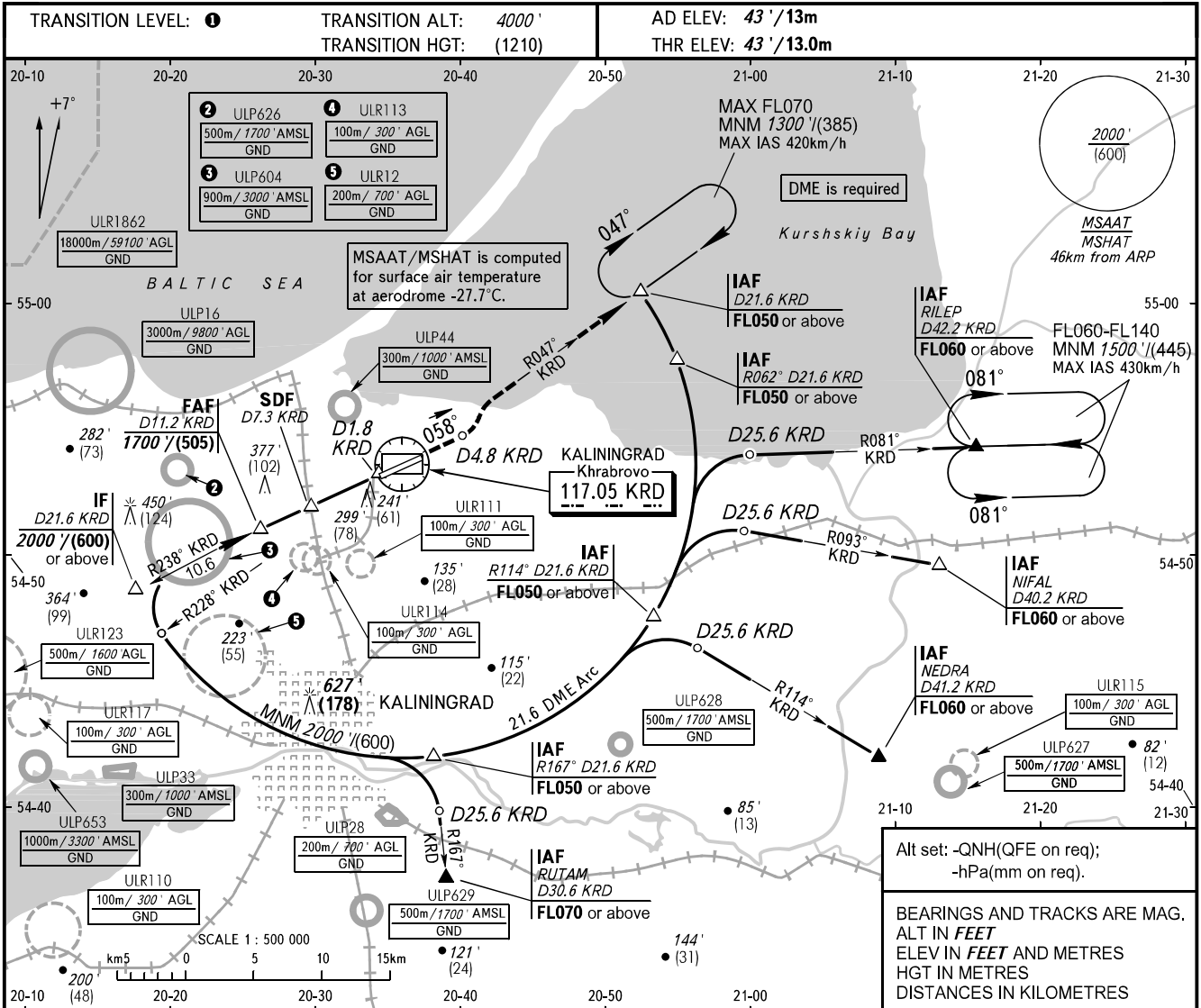


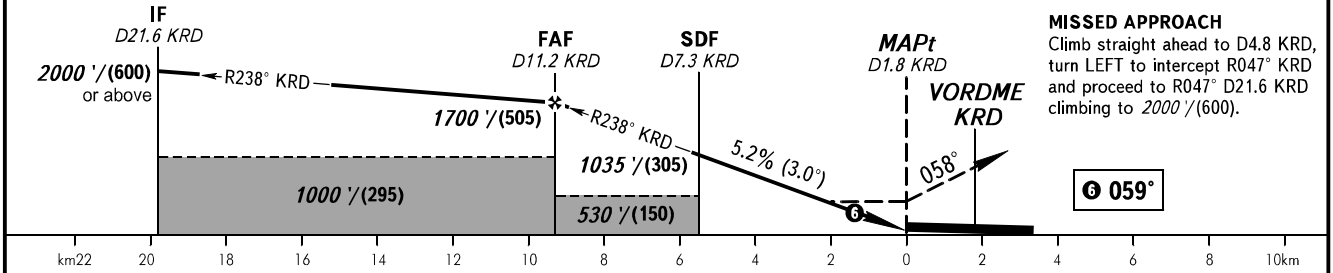
**INSTRUMENT
APPROACH
CHART - ICAO**

TOWER **127.200**

**KALININGRAD, RUSSIA
KHRABROVO
VOR Z RWY 06**



DME KRD	10.0	8.0	6.0	4.0
ALTITUDE/HEIGHT	1502' / (445)	1158' / (340)	814' / (235)	470' / (135)



OCA(H)		A	B	C	D						
Straight-in	With SDF	450' (410') (125)	450' (410') (125)	450' (410') (125)	450' (410') (125)						
	WO SDF	530' (490') (150)	530' (490') (150)	530' (490') (150)	530' (490') (150)						
Circling		600' (550') (170)	600' (550') (170)	700' (650') (205)	780' (730') (225)						
GROUND SPEED		km/h	150	180	210	240	270	300	330	360	390
RATE OF DESCENT		m/s	2.2	2.6	3.0	3.5	3.9	4.4	4.8	5.2	5.7
		ft/min	433	512	610	689	768	866	945	1024	1122

① TRANSITION LEVEL:
- FL050 when QNH is 1013 hPa (760mm mercury column) or above;
- FL060 when QNH is 977 hPa (733mm mercury column) or above, but less than 1013 hPa (760mm mercury column);
- FL070 when QNH is less than 977 hPa (733mm mercury column).

WARNING:
1. Final approach track is offset by 1° from the RWY centre line.
2. MAPt at D1.8 KRD. Timing not authorized for defining MAPt.

CHANGE: ULP626