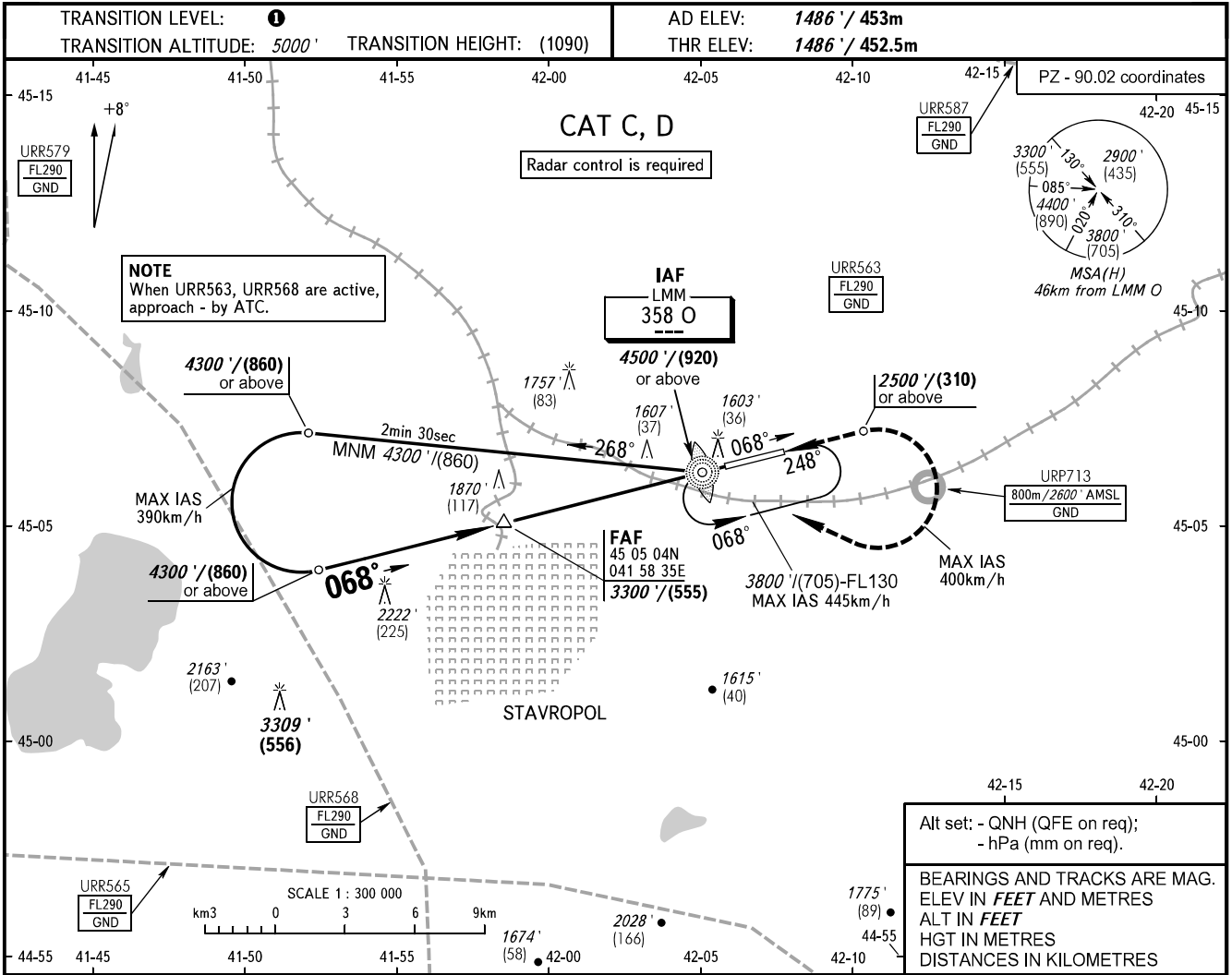


**INSTRUMENT
APPROACH
CHART - ICAO**

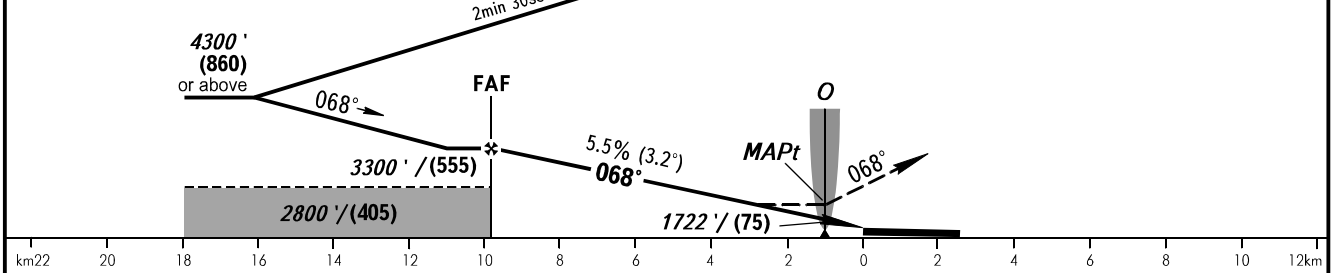
**STAVROPOL, RUSSIA
SHPAKOVSKOYE
NDB X RWY 07**

TOWER **120.900**



FAF is fixed by TAR (DIST 10.9).

MISSED APPROACH
Climb on track 068° to 2500'/(310) or above, then turn RIGHT to LMM O at 4500'/(920) or above, then according to chart.



OCA(H)		A	B	C	D
Straight-in Approach				1852' (376') (115)	1852' (376') (115)
Circling				2150' (670') (205)	2270' (780') (240)

1 TRANSITION LEVEL:
- FL060 when QNH is 1013 hPa (760mm mercury column) or above;
- FL070 when QNH is 977 hPa (733mm mercury column) or above, but less than 1013 hPa (760mm mercury column);
- FL080 when QNH is less than 977 hPa (733mm mercury column).

WARNING
MAPt at LMM O. Timing not authorized for defining MAPt.

GROUND SPEED	km/h	150	180	210	240	270	300	330	360	390
RATE OF DESCENT	m/s	2.3	2.8	3.2	3.7	4.1	4.6	5.1	5.5	6.0
	ft/min	451	541	632	722	812	902	992	1082	1173

CHANGE: Limiting bearing line withdrawn, URP713