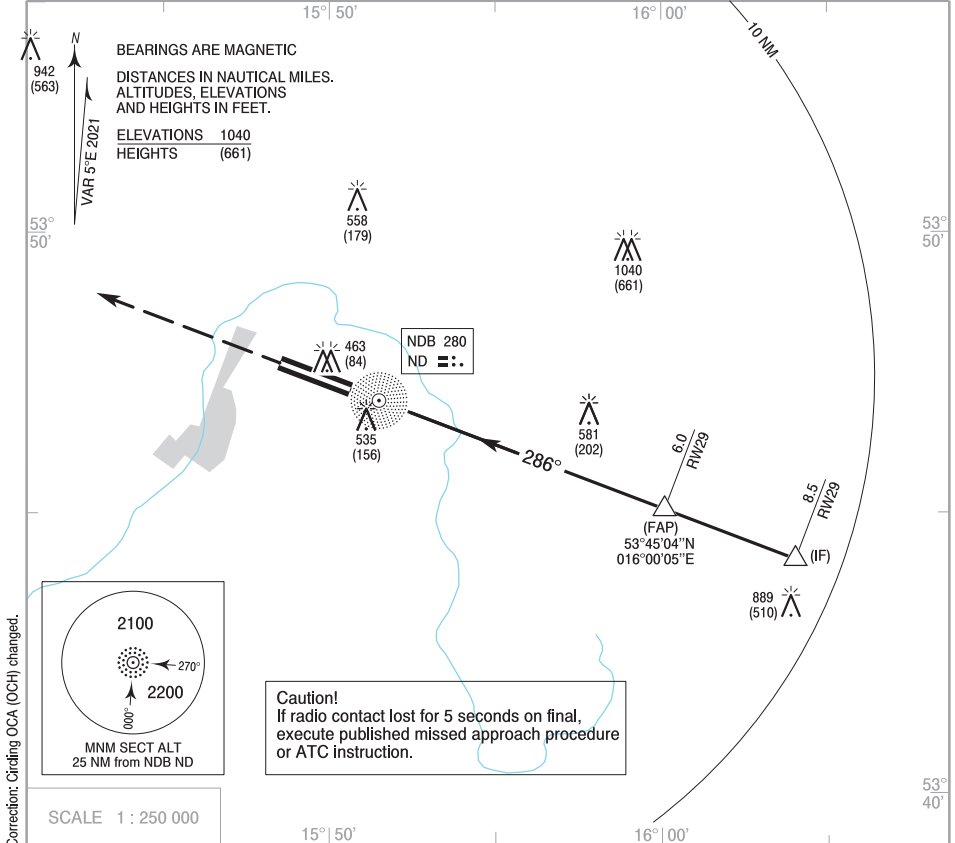


**INSTRUMENT
APPROACH
CHART - ICAO**

AERODROME ELEV 394 ft
THR RWY 29 ELEV 379 ft
HEIGHTS RELATED TO THR RWY 29

Swidwin PRECISION 131.175, 234.800
Swidwin APPROACH 125.175, 278.975
Swidwin TOWER 127.500, 233.975
ATIS 138.850

**SWIDWIN
PAR z
RWY 29 (CAT A/B/C/D/E)**

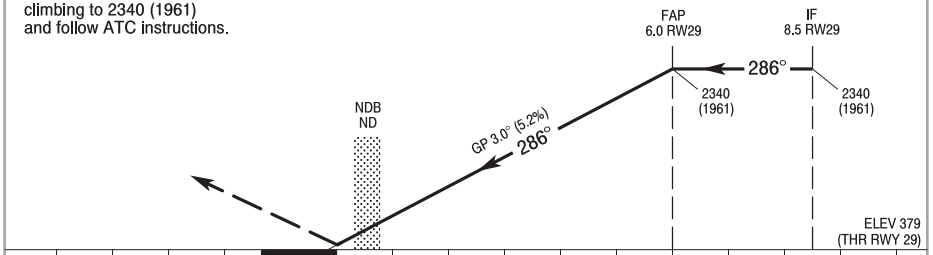


Correction: Circling OCA (OCH) changed.

MISSED APPROACH

Climb straight ahead to 1500 (1121),
then turn left on course 106°
climbing to 2340 (1961)
and follow ATC instructions.

TRANSITION ALTITUDE 6500



Cat. of ACFT	OCA (OCH)					Distance FAP - RWY29 6.0 NM							
	A	B	C	D	E	70	100	135	170	200	230		
PAR	639 (260)	639 (260)	639 (260)	639 (260)	639 (260)	4:50	3:40	2:40	2:10	1:50	1:35		
Straight-in						Rate of descent	370	530	710	890	1050	1210	
Circling (OCH AAL)	844 (450)	894 (500)	1014 (620)	1434 (1040)	1544 (1150)	Dist. to RWY29	6.0	5.0	4.0	3.0	2.0	1.0	0.6
						Altitude	2340	2020	1705	1390	1075	760	639