

STANDARD DEPARTURE CHART - INSTRUMENT

VAR 2.2° W

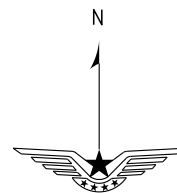
D-ATIS 128.6
TWR 123.0(118.85)

ZUUU CHENGDU/Shuangliu
RNAV RWY02L(MUMGO)

BEARINGS ARE MAGNETIC.
ALTITUDES, ELEVATIONS
AND HEIGHTS IN METERS.
DME DISTANCES IN
NAUTICAL MILES.
DISTANCES IN KM.

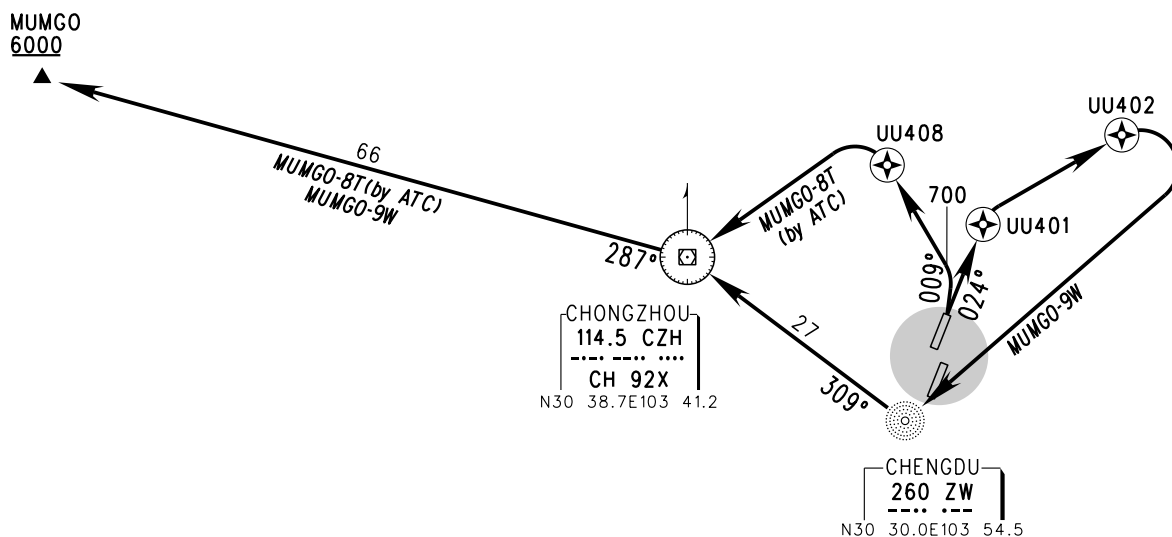
APP01 124.85(127.7)
APP06 126.35(125.25)
APP07 119.425(123.825)
APP08 119.25(123.825)

TL 3600
TA 3000
3300(QNH ≥ 1031hPa)
2700(QNH ≤ 979hPa)



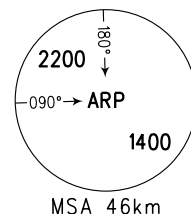
NOT TO SCALE

RNAV1
GNSS
or DME/DME/IRU
RADAR REQUIRED



Notes:

1. Under radar control service, actual flight ALT by ATC.
2. If estimated ALT at 'CZH' cannot reach 3900m, flight crew shall contact ATC in advance.
3. Turning is forbidden until DER.



| SID | ROUTING |
|----------------------|--------------------------|
| MUMGO-8T (by ATC) | 700-UU408-CZH-MUMGO |
| MUMGO-9W | UU401-UU402-ZW-CZH-MUMGO |

Changes: VAR.