

ICAO - INSTRUMENT APPROACH CHART

For operational limitations in case of volcanic ash cloud see AD 2 LICB 1-1 tab 23 and ENR 2.1.2 CATANIA CTR

TWR Comiso TWR 125.275
APP Catania APP/RADAR 119.250

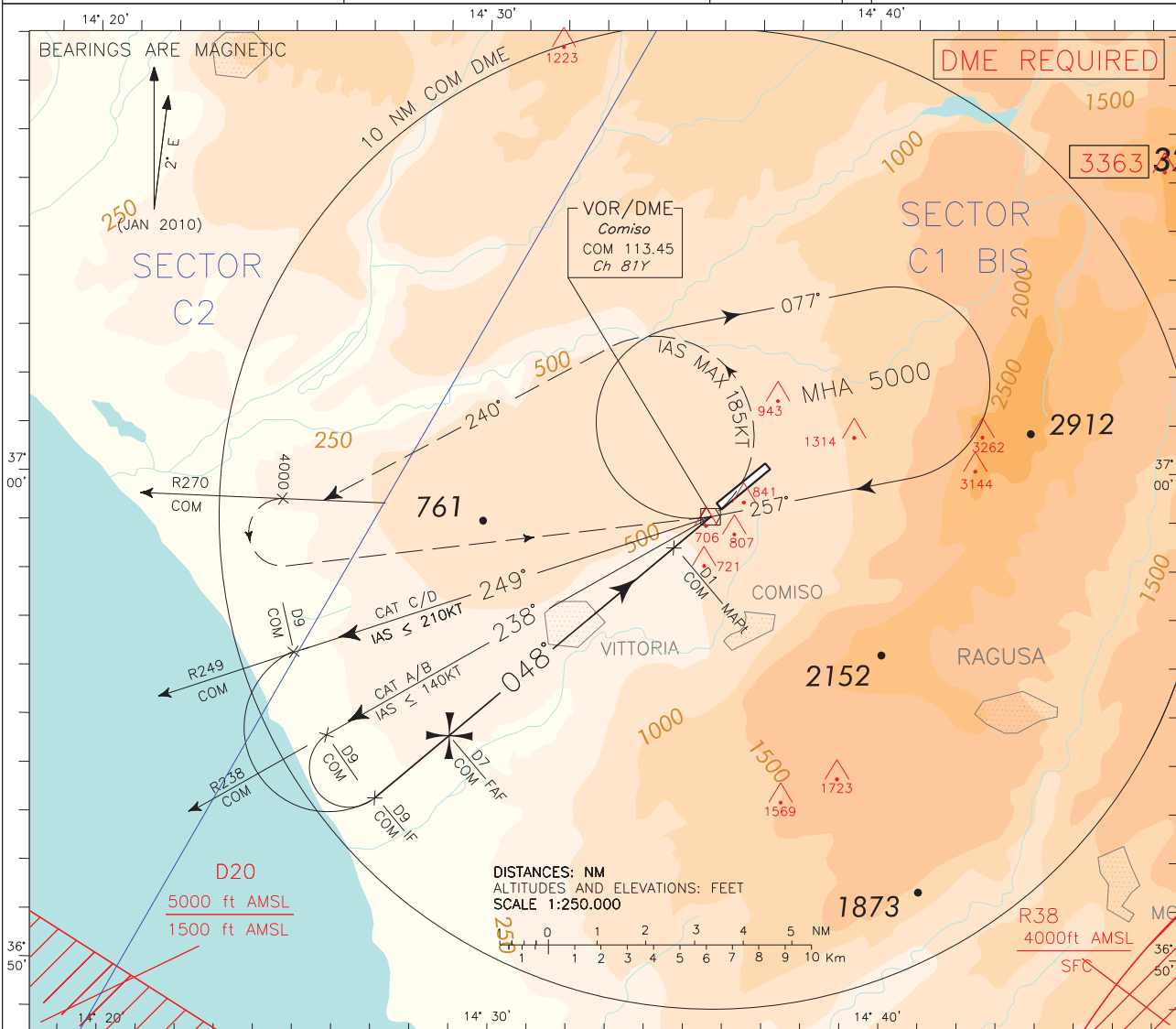
AD ELEV 756

LICB

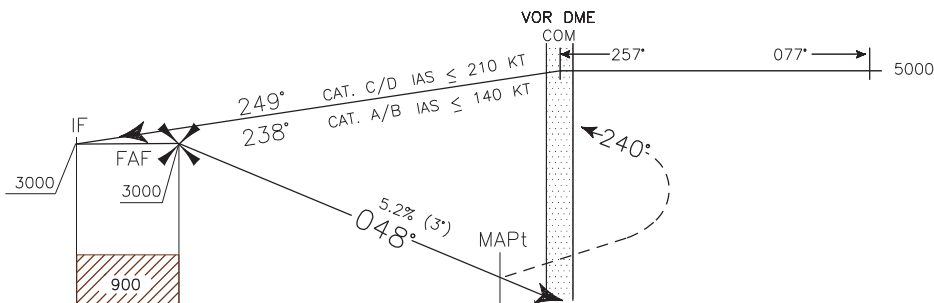
COMISO
VOR-Z RWY 05

DOC.8168-ED.5 2006 AMD.4

CHANGE: BOX FREQUENCIES UPDATED



TRANSITION ALT 7000 MISSED APPROACH: As soon as possible turn left (IAS MAX 185KT) on TR 240°, to join R270 COM VOR, climbing to 5000FT. At 4000FT (not later than D10 COM DME) turn left to COM VOR to be reached at 5000FT.



COM DME													D12 D11 D10 D9 D8 D7 D6 D5 D4 D3 D2 D1 0 THR ELEV 661													COM DME												
NM													13 12 11 10 9 8 7 6 5 4 3 2 1 0 1 2 3 4 5 6 7 8 9													NM												
OCA (OCH)		A		B		C		D		(*) CIRCLING SECTOR		GS		FT PER MIN		FAF-MAPt		MAPt-THR		COM DME		ALT (HGT)		MNM SECT ALT COM VOR														
STRAIGHT IN APPROACH		VORDME		1100 (439)				80		425		4 : 30		0 : 57		5 DME		2385 (1724)																				
		100		531				3 : 36		0 : 45		4 DME		2070 (1409)																								
		120		637				3 : 00		0 : 38		3 DME		1750 (1089)																								
		140		743				2 : 34		0 : 32		2 DME		1430 (769)																								
		160		849				2 : 15		0 : 28		1 DME		1115 (454)																								
(*) CIRCLING		1400(644)		1650(894)		2050(1294)		2450(1694)		ONLY NORTH OF RWY																												

Edited by AM - CIGA