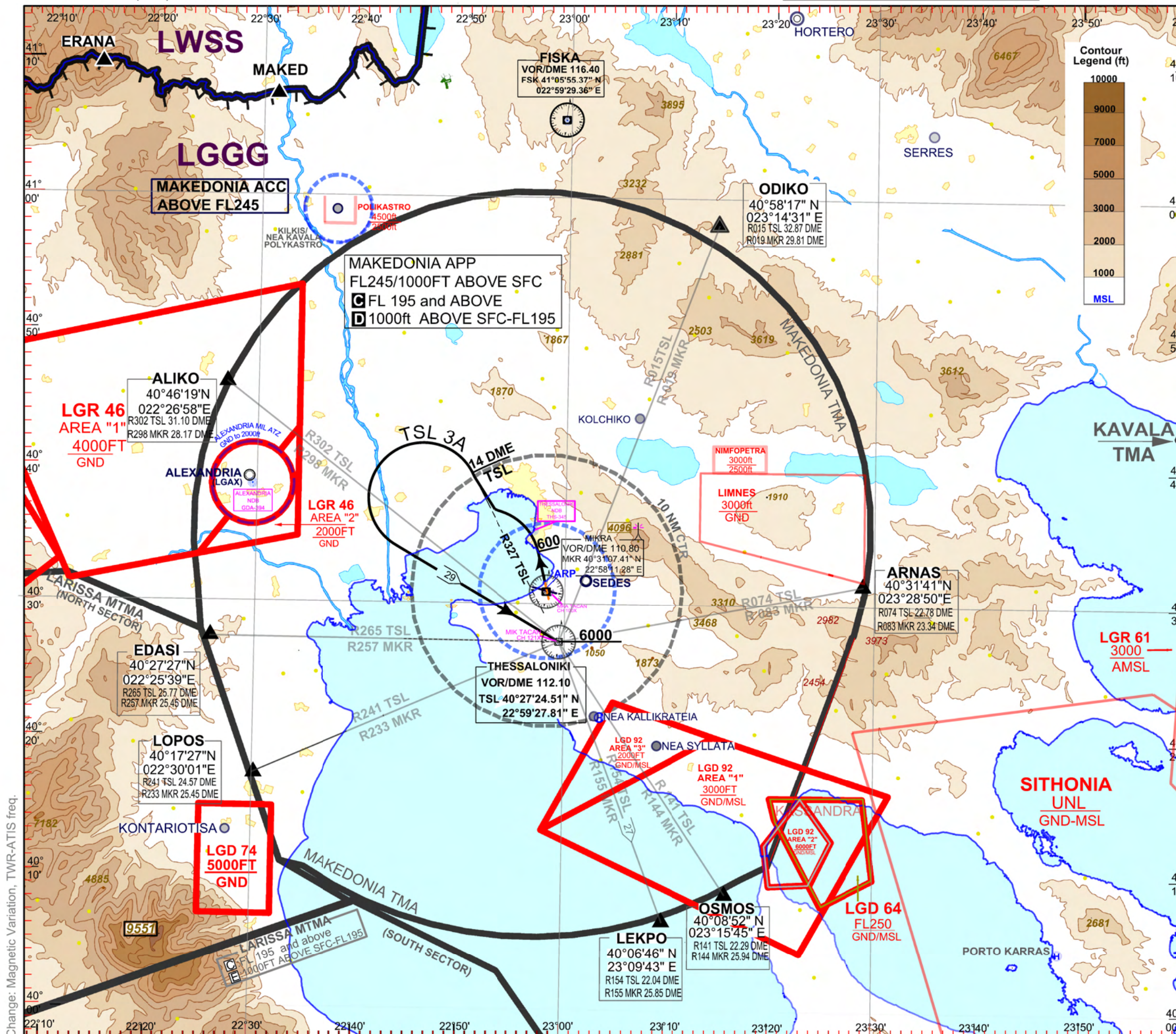


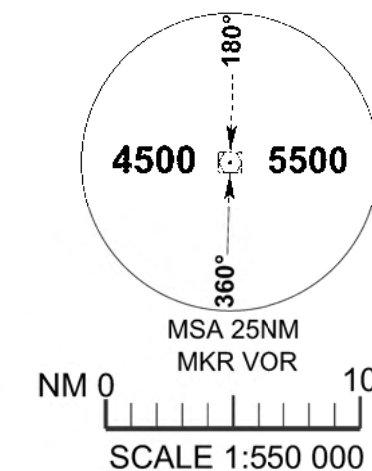
ATIS 127.555	MAKEDONIA TWR	118.105
	APP	120.800

THESSALONIKI / MAKEDONIA
RWY 34 (BASED ON TSL VOR/DME)
TSL 3A



1. Speed restriction 250kt MAX IAS during the turns
2. Minimum bank angle 15°
3. When, for the following SID, an altitude higher than the TRANSITION ALTITUDE is designated, then an equivalent FLIGHT LEVEL shall be specified by ATC UNIT.
4. Initial Clearance Limit FL080.

For this SID a minimum PDG (Procedure Design Gradient) of 5.2% (315ft/nm) is required up to the MEA (Minimum En-route Altitude) of the assigned Airway (from 6000ft up to the MEA for ATC purposes). **Climb straight ahead to 600ft, turn left to intercept R327 TSL. At R327 TSL/14 DME Fix turn left and proceed to TSL VOR 6000ft or above and then to the assigned route by the ATC unit.**



ELEVATIONS, ALTITUDES
ARE IN FEET
BEARINGS, TRACKS AND
RADIALS ARE MAGNETIC
DISTANCES ARE IN NM
VAR 5°E/2022 - Annual Change 5'44"