

**NATIONAL INSTRUMENT APPROACH CHART**

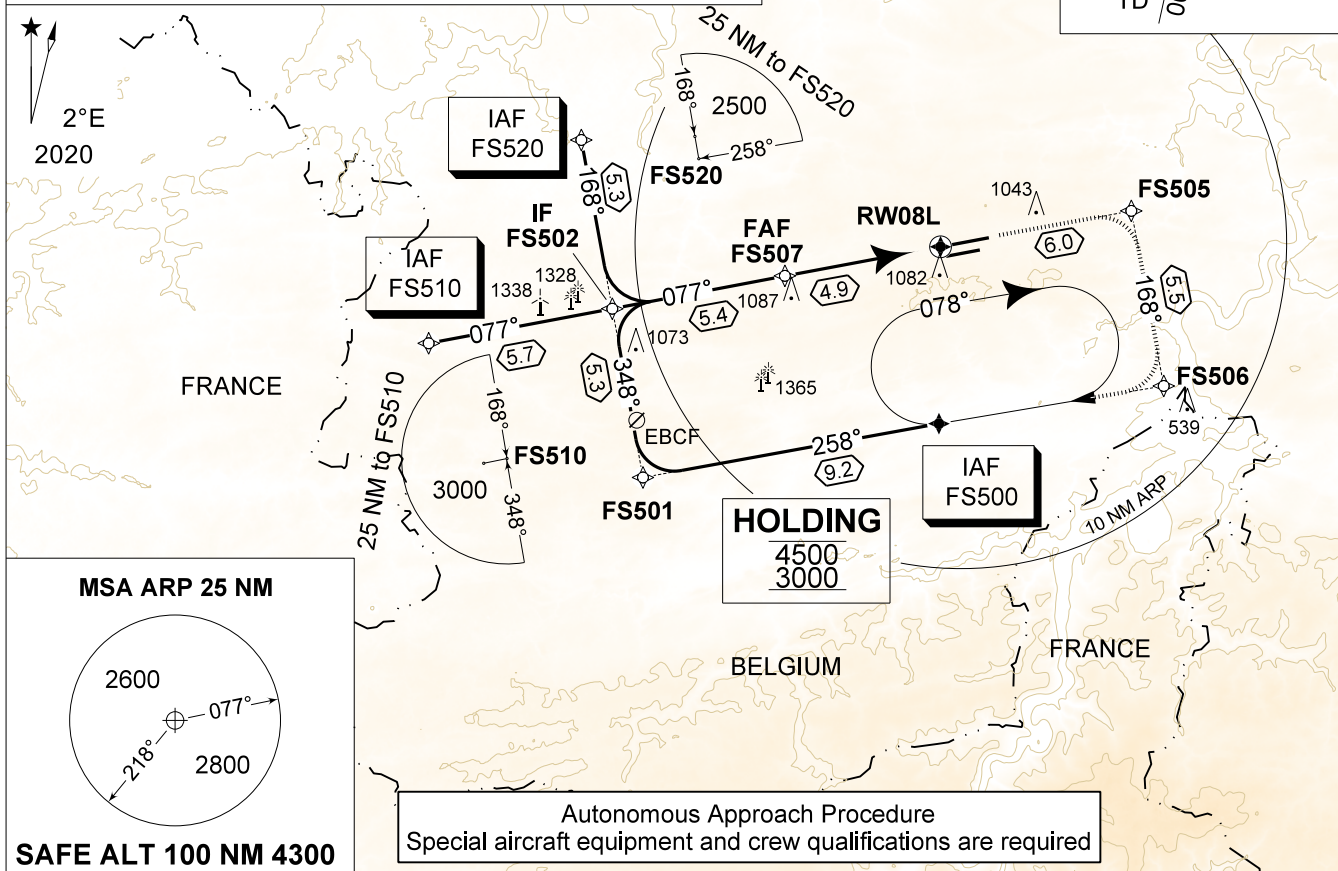
AD ELEV 927

**AA RWY 08L FLORENNES (EBFS)**

BELGA RADAR 374.400 129.325	FLORENNES APP 372.275 124.380	FLORENNES TWR 234.800 125.880	FLORENNES GND 356.925 122.100
APCH in EGNOS service Volume for APV SBAS usable when available	APP COURSE 077° M 079° T	GS 3.00°	FAF ALT 2500 FT
		DA GEO 1320 DA BARO 1301	THR 900 FT ALS 750 M LDA 8648 FT

**WARNING:**  
a) MNMTEMP IN BARO IS -15°  
b) TO AVOID LEAVING CONTROLLED AIRSPACE, HOLDING TO BE FLOWN ONLY UNDER RADAR CONTROL

**CAUTION:**  
a) LOCALIZER ANTENNA 1000 FT BEFORE THR RWY08L, 10 FT ABOVE THR ELEV



THR 08L	4	3	2	TA 4500
Altitude Height	2230 (1330)	1910 (1010)	1600 (700)	

**MISSED APPROACH**  
MAX 190 KIAS  
Climb inbound FS505 then FS506 to reach IAF FS500 at 3000 FT.

CAT I 4.9 THR 900

CATEGORY	C	Data ALS RWY 08L	
AA (GEO) 08L (DA)	1320 - 1.4 420 (500 - 1.4 / 2.2) GS 3.00°	ANCHOR POINT: ALS Code: Final Course (true): Vertical Path Angle:	N 50°14.480' / E 004°37.775' / 954 FT 6 3 7 K Z A 079°T 3°
AA (BARO) 08L (DA)	1301 - 1.3 401 (500 - 1.3 / 2.1) GS 3.00°	FAP Altitude: Distance IF - FAP: Anchor Point:	2500 FT 5.4 NM 54 FT ABOVE THR 08L

**AA RWY 08L FLORENNES (EBFS)**

50°14.60' N  
004°38.74' E

CHANGES: id MAPT corrected

BEL DEFENCE, AIR COMPONENT 08-AUG-2024 - THS