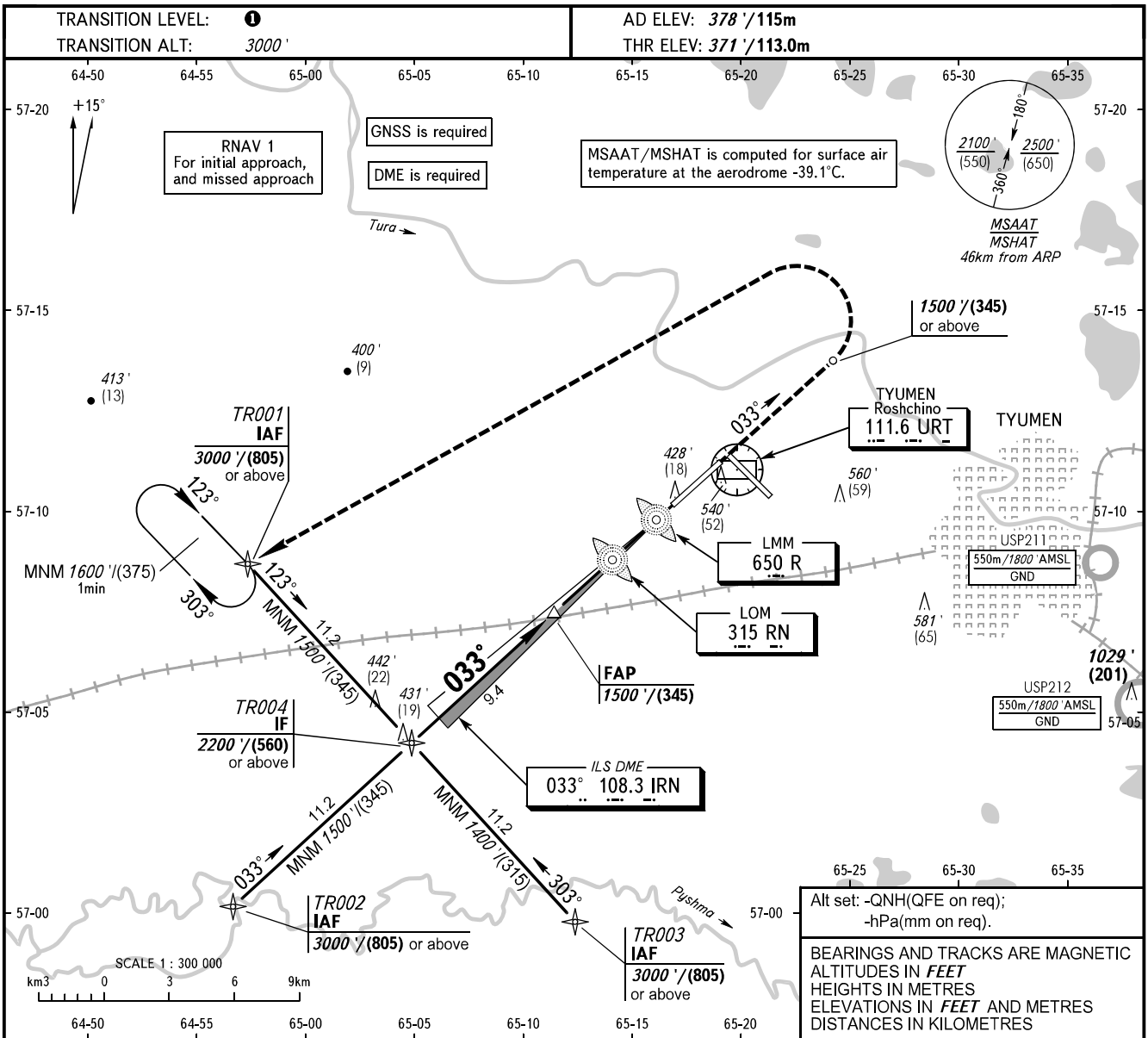


**INSTRUMENT  
APPROACH  
CHART - ICAO**

**TYUMEN, RUSSIA  
ROSHCHINO  
ILS Z CAT I RWY 03**

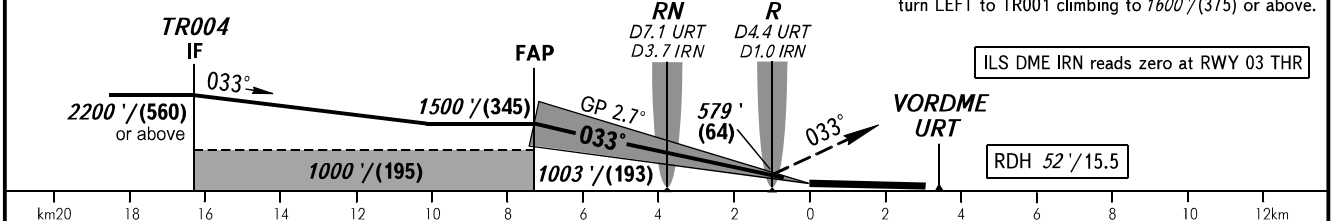
RADAR 126.100  
START 118.200



Alt set: -QNH(QFE on req);  
-hPa(mm on req).  
BEARINGS AND TRACKS ARE MAGNETIC  
ALTITUDES IN FEET  
HEIGHTS IN METRES  
ELEVATIONS IN FEET AND METRES  
DISTANCES IN KILOMETRES

DME IRN	6.0	4.0	2.0
ALTITUDE/HEIGHT	1351'/(299)	1042'/(205)	733'/(111)

**MISSED APPROACH**  
Climb on track 033° to 1500'/(345) or above,  
turn LEFT to TR001 climbing to 1600'/(375) or above.



OCA(H)		A	B	C	D	<b>① TRANSITION LEVEL:</b> - FL040 when QNH is 1013 hPa (760mm mercury column) or above; - FL050 when QNH is 977 hPa (733mm mercury column) or above, but less than 1013 hPa (760mm mercury column); - FL060 when QNH is less than 977 hPa (733mm mercury column).					
Straight-in Approach	CAT I	571' (200') (60)	571' (200') (60)	578' (207') (64)	589' (218') (67)						
		840' (460') (145)	870' (500') (155)	970' (600') (180)	1070' (690') (215)						
Circling											
GROUND SPEED		km/h	150	180	210	270	300	330	360	390	
RATE OF DESCENT		kt	81	97	113	130	146	162	178	194	211
		m/s	1.9	2.3	2.7	3.1	3.5	3.9	4.3	4.7	5.0
		ft/min	374	453	532	610	689	768	847	925	984

CHANGE: New chart