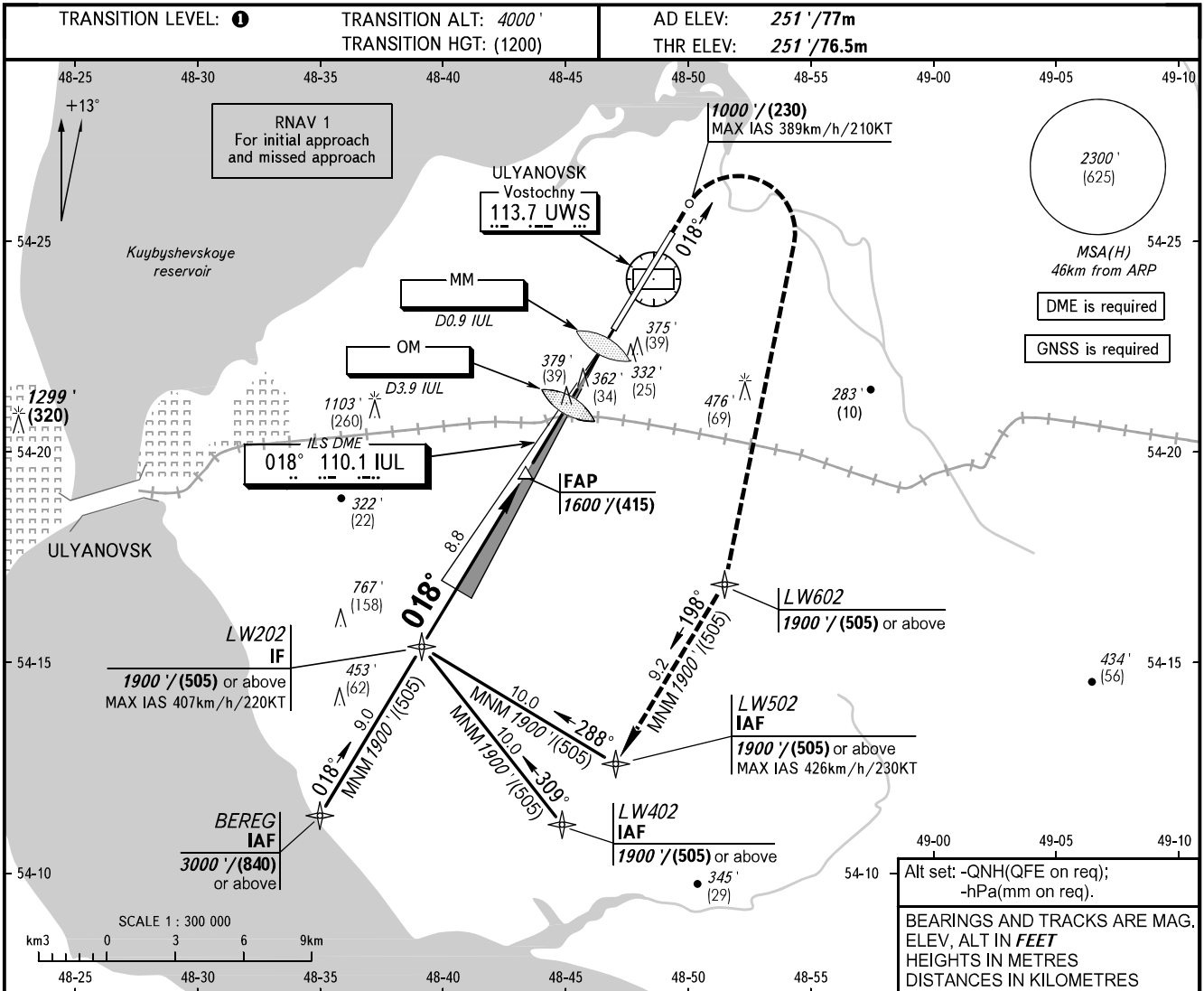


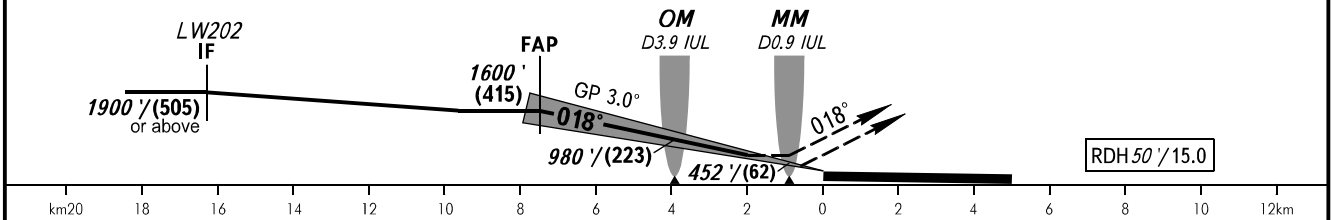
**INSTRUMENT  
APPROACH  
CHART - ICAO**

VOSTOCHNY TOWER 124.200

**ULYANOVSK, RUSSIA  
VOSTOCHNY  
ILS Z CAT I RWY 02**



**MISSED APPROACH**  
Climb straight ahead to 1000' / (230), turn RIGHT to LW602 climbing to 1900' / (505) or above, then to LW502 or as instructed by ATC.



OCA(H)		A	B	C	D						
Straight-in	<b>CAT I</b>	388' (137') (42)	396' (145') (45)	406' (155') (48)	416' (165') (51)						
	Approach										
Circling		680' (420') (135)	750' (500') (155)	870' (600') (190)	950' (700') (215)						
GROUND SPEED	km/h		150	180	210	240	270	300	330	360	390
	kt		81	97	113	130	146	162	178	194	211
RATE OF DESCENT	m/s		2.2	2.6	3.0	3.5	3.9	4.3	4.8	5.2	5.6
	ft/min		427	512	597	682	768	853	938	1024	1109

**① TRANSITION LEVEL:**  
- FL050 when QNH is 977 hPa (733mm mercury column) or above;  
- FL060 when QNH is less than 977 hPa (733mm mercury column).

**WARNING:**  
1. Visual manoeuvring north-west of the aerodrome is PROHIBITED.  
2. Zero range of DME IUL is indicated at RWY 02 THR.