

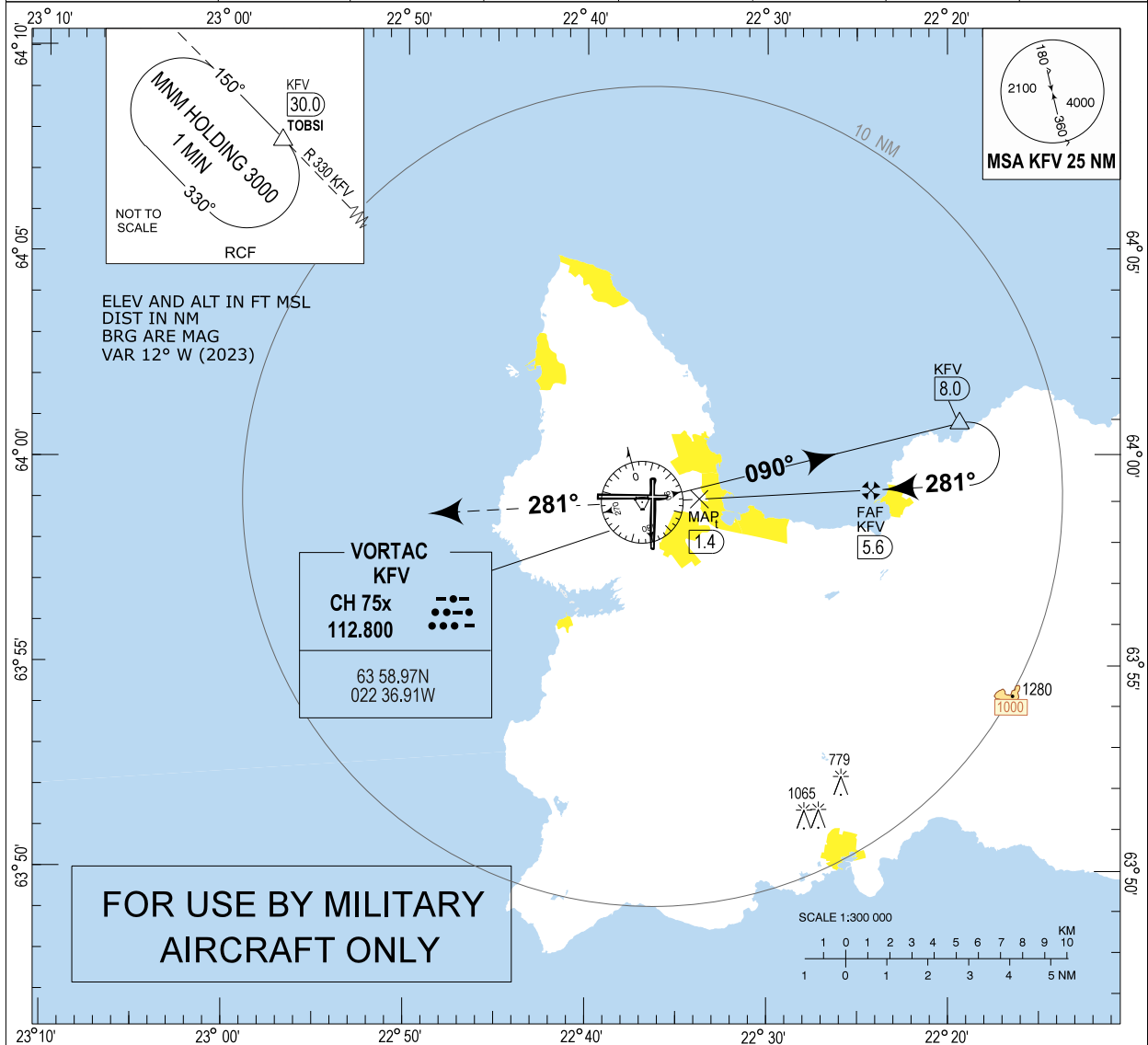
Keflavik MILITARY VORTAC RWY 28 (CAT A-B)

MIPS
INSTRUMENT APPROACH CHART

AD ELEV 170

VORTAC RWY 28 (CAT A-B)
KEFLAVIK (BIKF)

REYKJAVIK CONTROL 119.700	KEFLAVIK ATIS 128.300 311.600	KEFLAVIK APPROACH 119.300	KEFLAVIK TOWER 118.300	KEFLAVIK GND 121.900
VORTAC KJV CH 75x/112.800	APP CRS 281°	FAF ALT 1800 FT	Descent GR 3.0% (5.2°)	MDA 480 / 480
			THR ELEV 169 FT	ALS length 900 M
				LDA 10057 FT



MISSED APPROACH:

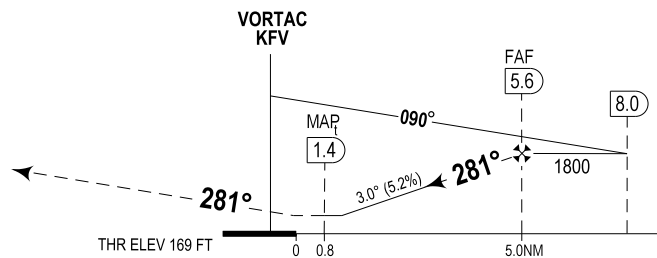
Climb on course 281° to 3000.
Expect vectoring by KEFLAVIK APP.

RCF:

At KJV 10 DME turn right on heading 010°, intercept
KJV radial 330 and hold at TOBSI at 3000

DIST TO KJV	2	3	4	5
ALTITUDE	670	985	1305	1620

Timing not authorized for defining MAP



CATEGORY		A	B
MIPS	VORTAC 28	480 -0.8 312 (400-0.8/1.4)	480 -0.8 312 (400-0.8/1.4)
	CIRCLING	600 -2.0 431 (500-2.0)	670 -2.3 501 (600-2.3)

VORTAC RWY 28 (CAT A-B)

KEFLAVIK (BIKF)

CHANGES: RESTRICTED AREA BIR2 REMOVED

THIS PAGE INTENTIONALLY LEFT BLANK