

FLINT, MICHIGAN

AL-618 (FAA)

23222

VORTAC FNT 116.9 Chan 116	APP CRS 359°	Rwy Idg 7652 TDZE 782 Apt Elev 782
---	------------------------	---

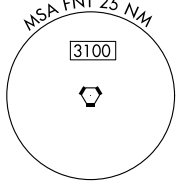
VOR RWY 36

BISHOP INTL (F'NT)

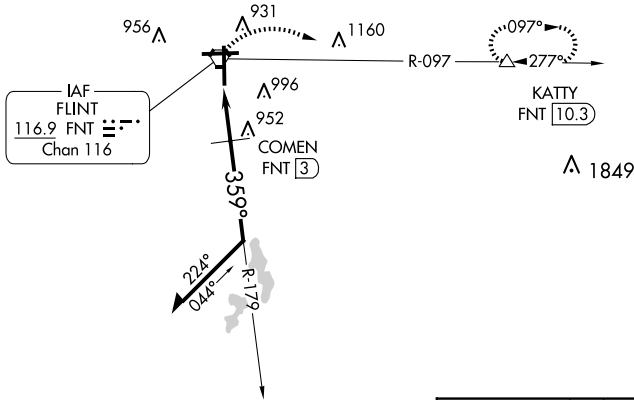
⚠ Rwy 36 helicopter visibility reduction below ¾ SM NA.
DME required.

MISSED APPROACH: Climbing right turn to 3000
on FNT VORTAC R-097 to KATTY/10.3 DME and hold.

ATIS 133.15	GREAT LAKES APP CON * 118.8 257.9	FLINT TOWER * 126.3 (CTAF) 0 257.9	GND CON 121.9	CLNC DEL 121.75	UNICOM 122.95
-----------------------	---	--	-------------------------	---------------------------	-------------------------



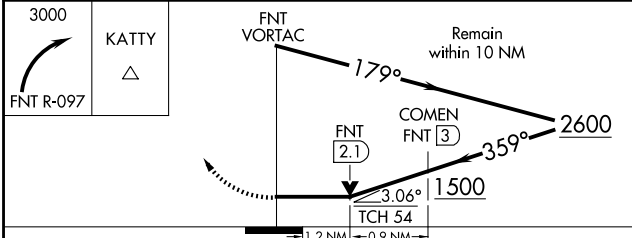
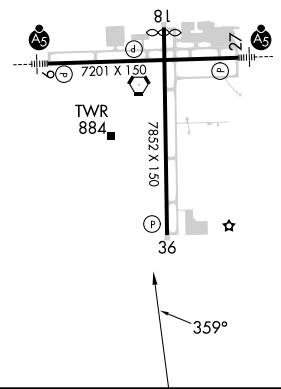
CAUTION: Brightly lighted parking lot
4000' east of approach end Rwy 27
can easily be confused for Rwy 27.



EC-1, 20 MAR 2025 to 17 APR 2025

EC-1, 20 MAR 2025 to 17 APR 2025

ELEV 782 **D** TDZE 782
HIRL Rwys 9-27 and 18-36 **Ⓛ**
REIL Rwy 18 and 36 **Ⓛ**



CATEGORY	A	B	C	D
S-36	1220-1	438 (500-1)	1220-1¼	438 (500-1¼)
C CIRCLING	1240-1 458 (500-1)	1300-1 518 (600-1)	1300-1½ 518 (600-1½)	1520-2¼ 738 (800-2¼)

FLINT, MICHIGAN
Orig-A 24MAY18

42°58'N-83°45'W

BISHOP INTL (F'NT) VOR RWY 36