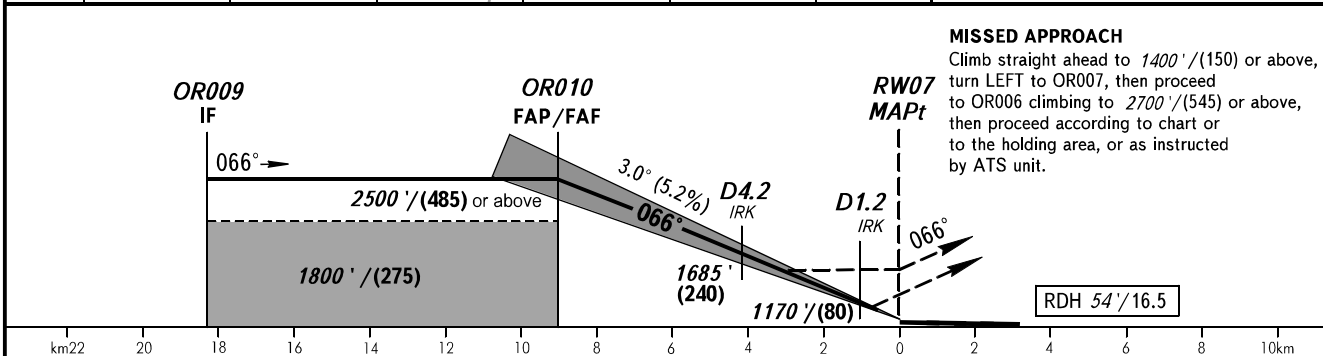
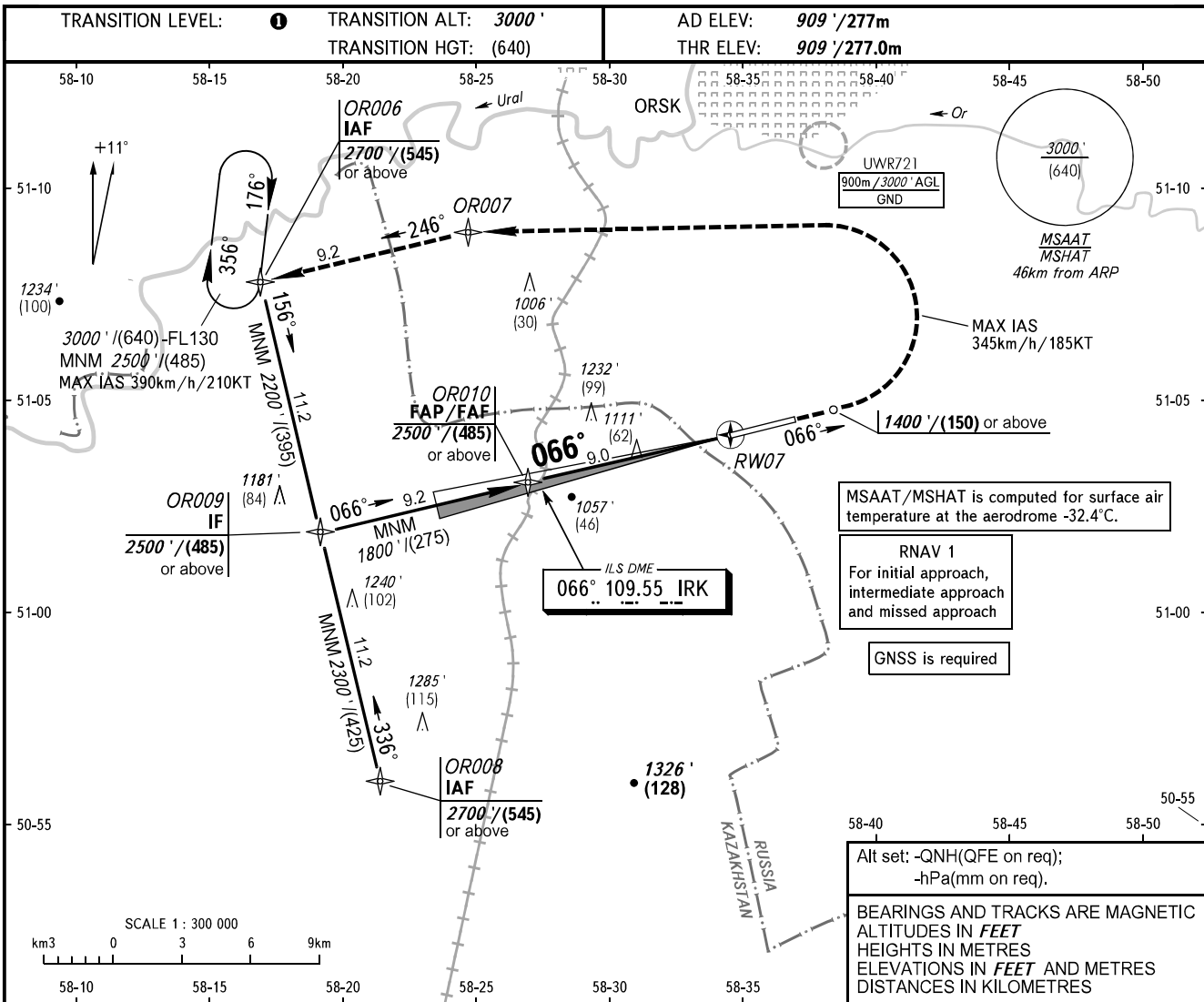


**INSTRUMENT
APPROACH
CHART - ICAO**

TOWER 122.700

ORSK, RUSSIA
ORSK
ILS Z, LOC Z RWY 07



OCA(H)		A	B	C	D
Straight-in	CAT I	1089' (180') (55)	1102' (193') (59)	1110' (201') (62)	1120' (211') (65)
	LOC	1360' (450') (140)	1360' (450') (140)	1360' (450') (140)	1360' (450') (140)
Circling		1360' (450') (140)	1410' (500') (155)	1630' (720') (220)	1660' (750') (230)

TRANSITION LEVEL:
- FL040 when QNH is 1013 hPa (760mm mercury column) or above;
- FL050 when QNH is 977 hPa (733mm mercury column) or above, but less than 1013 hPa (760mm mercury column);
- FL060 when QNH is less than 977 hPa (733mm mercury column).
DME IRK - zero indication at THR.

GROUND SPEED	km/h	150	180	210	240	270	300	330	360	390	420	450
RATE OF DESCENT	m/s	2.2	2.6	3.0	3.5	3.9	4.3	4.8	5.2	5.6	6.1	6.5
	ft/min	427	512	597	682	768	853	938	1024	1109	1194	1280

CHANGE: New chart