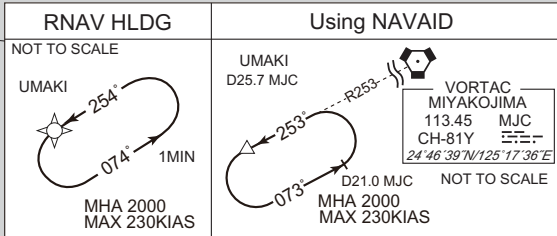
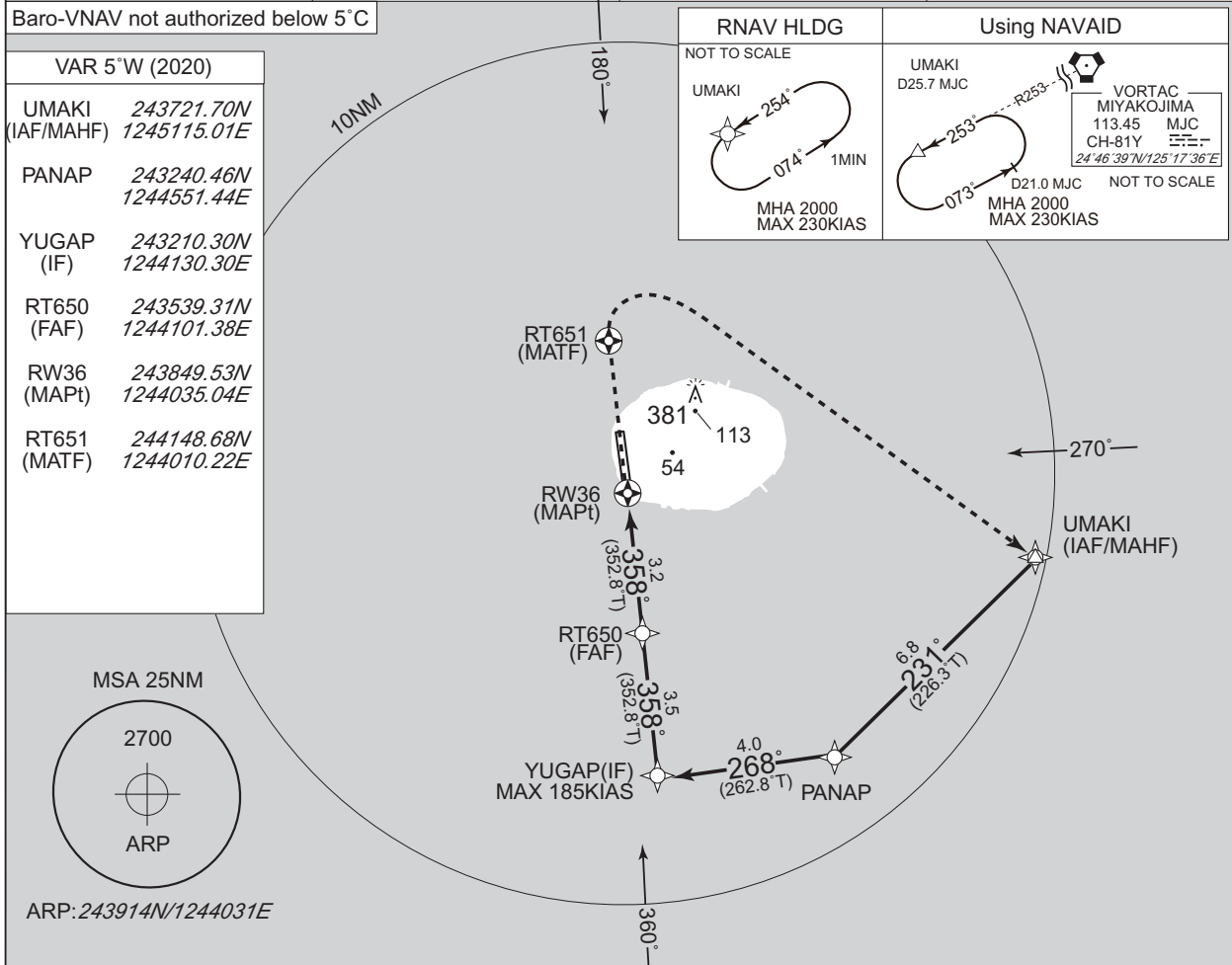


INSTRUMENT APPROACH CHART

RORT / TARAMA

RNP RWY36

SAKISHIMA APP 125.0 –121.2	RNP APCH	TARAMA RADIO 118.6 AFIS provided by Naha Airport Office	RADAR AVBL
-------------------------------	----------	--	------------

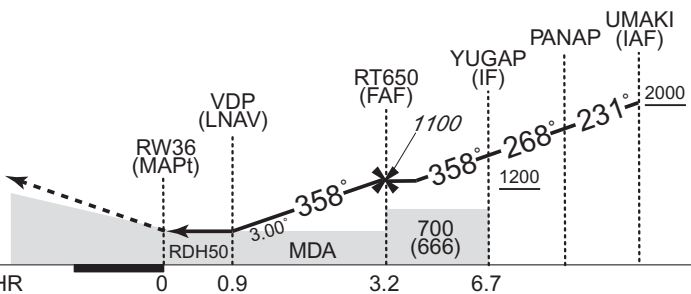


NM to Next Fix	MAPt	1	2	3	FAF
ALT(3.0° APCH Path)	-	404	722	1041	1100

CHANGE: PROC renamed. Requirement for RNP.

MISSED APPROACH

Direct to RT651, turn right direct to UMAKI and hold at 2000FT. Contact SAKISHIMA APP.



Missed APCH climb gradient MNM 5.0%

CAT	LNAV/VNAV		LNAV		CIRCLING	
	DA(H)	CMV	MDA(H)	CMV	MDA(H)	VIS
A	340(304)	1500	340(306)	1500	680(646)	1600
B	360(324)	1800	360(326)	1800		2400
C	-	-	-	-	-	-
D	-	-	-	-	-	-

MINIMA with Missed APCH climb gradient of 2.5% are not established.