

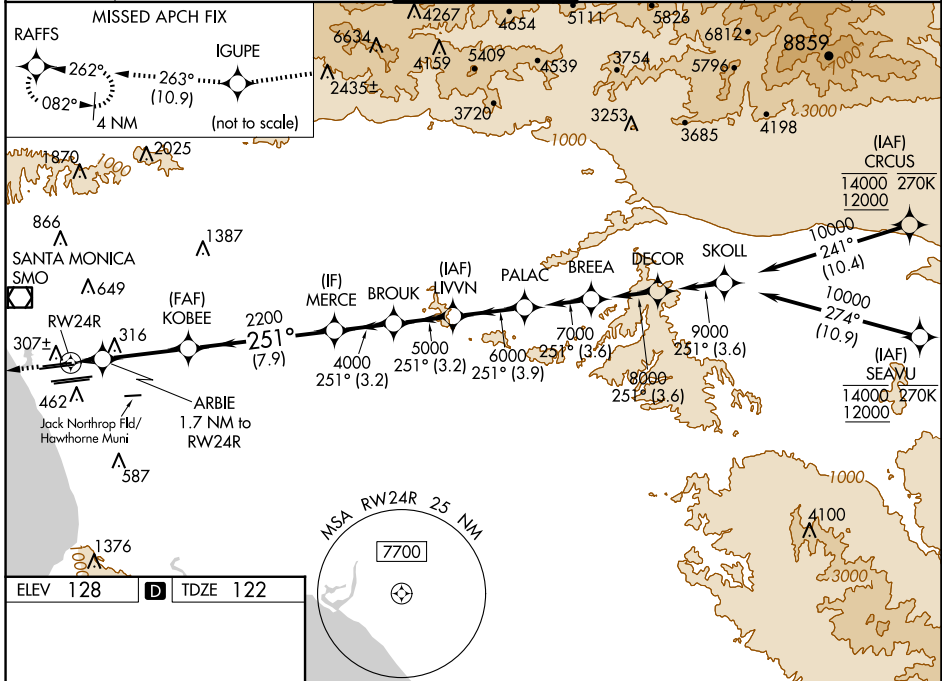
WAAS CH 69307 W24A	APP CRS 251°	Rwy Idg TDZE Apt Elev	8926 122 128
--	------------------------	-----------------------------	---

RNAV (GPS) Y RWY 24R

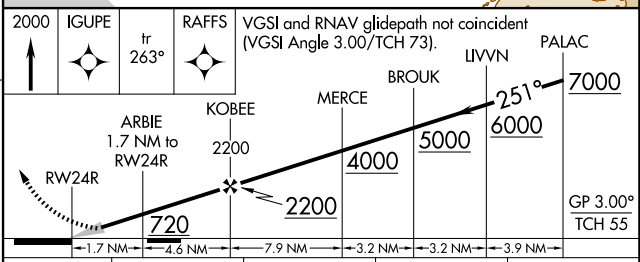
LOS ANGELES INTL (LAX)

RNP APCH.	<p>▼ LNAV procedure NA during simultaneous operations. Use of FD or AP required during simultaneous operations. Simultaneous approach authorized with HHR. For uncompensated Baro-VNAV systems, LNAV/VNAV NA below 6°C or above 54°C. Simultaneous approach authorized. For inop ALS, increase LNAV/VNAV all Cats visibility to 1½ SM, and LNAV Cat C/D visibility to 1¾ SM.</p>	<p>ALSIF-2</p>	<p>MISSED APPROACH: Climb to 2000 direct IGUPE and track 263° to RAFFS and hold.</p>
-----------	--	----------------	--

D-ATIS ARR 133.8 DEP 135.65	SOCAL APP CON 124.3 363.2 [APCH FM WEST] [225°-044°]	124.9 269.0 [090°-224°] 128.5 360.7 [045°-089°]	LOS ANGELES TOWER N 133.9 239.3 S 120.95 379.1	GND CON N 121.65 327.0 S 121.75 327.0 W 121.4 327.0	CLNC DEL 120.35 327.0	CPDLC
---	--	--	--	---	---	-------



ELEV 128	D	TDZE 122
<p>TDZ/CL Rwy 6s, 7L, 24R, and 25L HIRL all Rwys</p>		



CATEGORY	A	B	C	D
LPV	DA	322/18	200 (200-½)	
LNAV/VNAV	DA	589/60	467 (500-1¼)	
LNAV MDA	640/24	518 (600-½)	640/55	518 (600-1)

SW-3, 20 MAR 2025 to 17 APR 2025

SW-3, 20 MAR 2025 to 17 APR 2025