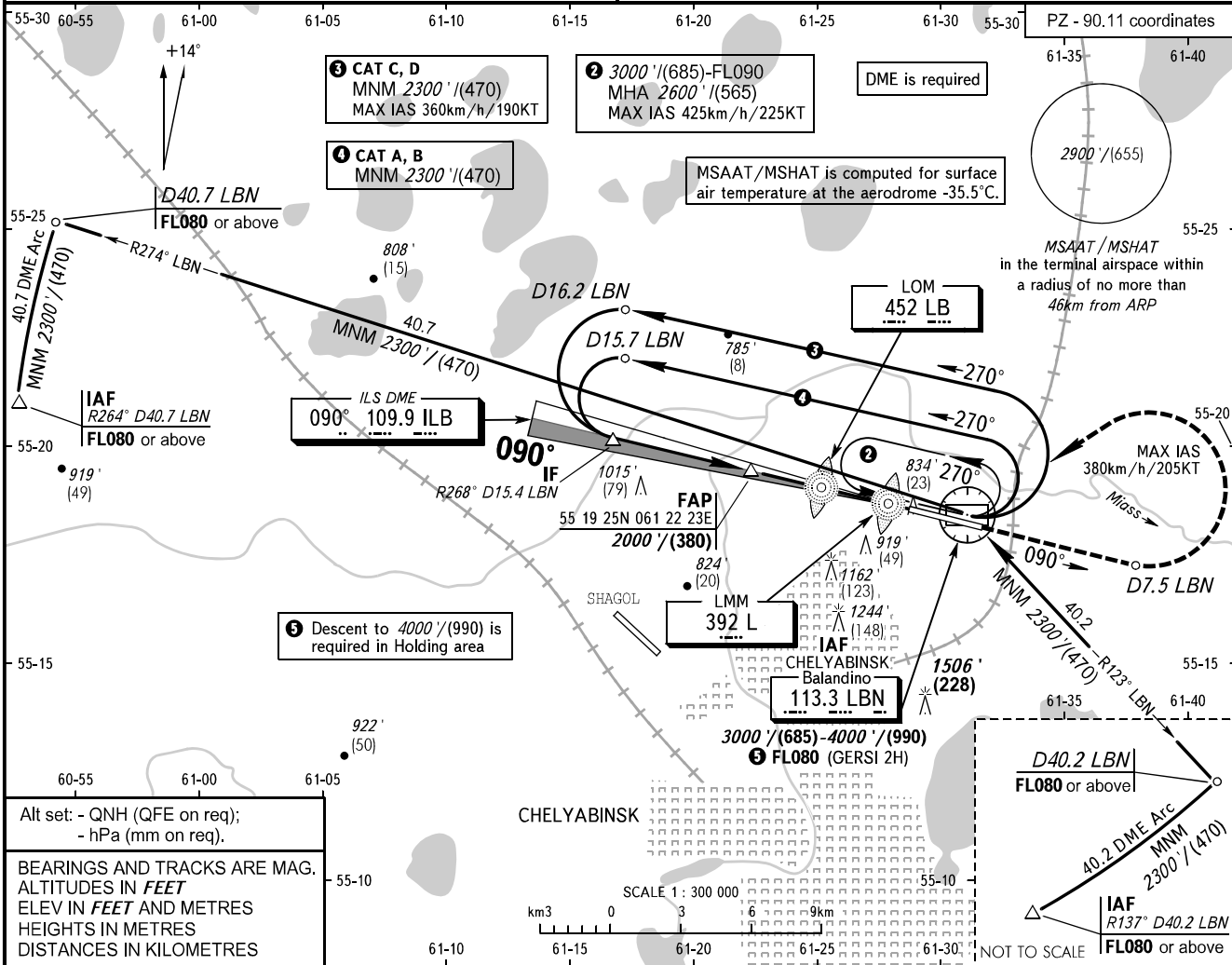


**INSTRUMENT  
APPROACH  
CHART - ICAO**

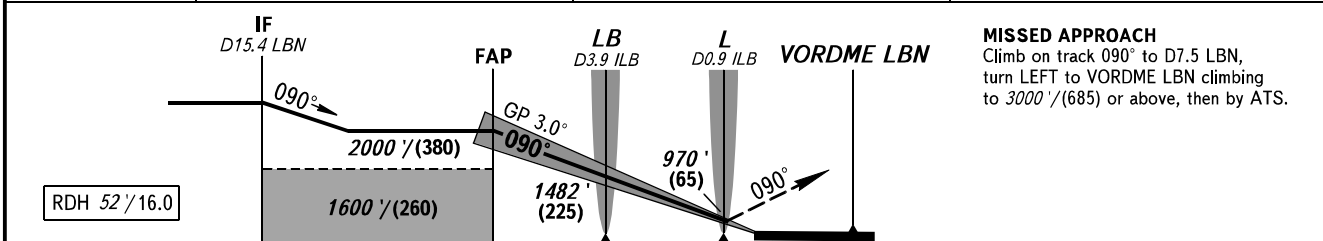
**CHELYABINSK, RUSSIA  
BALANDINO  
ILS Y CAT I RWY 09**

RADAR **133.200**  
START **125.200**

TRANSITION LEVEL: **01**      TRANSITION ALT: **6000'**      AD ELEV: **769' / 234m**  
TRANSITION HGT: **(1600)**      THR ELEV: **759' / 231.5m**



DME ILB	6.0	4.0	2.0
ALTITUDE/HEIGHT	1843' / (331)	1499' / (226)	1155' / (121)



OCA(H)		A	B	C	D					
Straight-in Approach	CAT I	959' (200') (61)	959' (200') (61)	959' (200') (61)	959' (200') (61)					
Circling		1220' (450') (140)	1460' (690') (210)	1640' (870') (265)	1900' (1140') (345)					
GROUND SPEED	km/h		150	180	210	240	270	300	330	360
	kt		81	97	113	130	146	162	178	194
RATE OF DESCENT	m/s		2.2	2.6	3.0	3.5	3.9	4.3	4.8	5.2
	ft/min		427	512	597	682	768	853	938	1024

**1** TRANSITION LEVEL:  
- FL070 when QNH is 1013 hPa (760mm mercury column) or above;  
- FL080 when QNH is 977 hPa (733mm mercury column) or above, but less than 1013 hPa (760mm mercury column);  
- FL090 when QNH is less than 977 hPa (733mm mercury column).

**WARNING**  
DME ILB reads zero at RWY 09 THR.

CHANGE: New chart