

STANDARD DEPARTURE CHART - INSTRUMENT

VAR 0.7° E

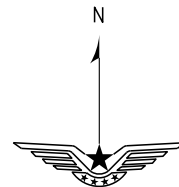
TWR 118.6(130.0)

ZLDH DUNHUANG/Mogao

RWY 26

BEARINGS ARE MAGNETIC
ALTITUDES, ELEVATIONS
AND HEIGHTS IN METERS
DME DISTANCES IN
NAUTICAL MILES
DISTANCES IN KM

TL 3600
TA 3000
3300(QNH ≥ 1031hPa)
2700(QNH ≤ 979hPa)



NOT TO SCALE

BIKNO
N40 54.9
E093 50.9

NUKTI
N41 51.7
E095 12.0

191
NUKTI-11D

314°
R314°
BIKNO-11D

DUNHUANG
115.5 DNH
CH 102X
N40 09.8E094 50.7

1800
NUKTI-11D
VIKUP-11D

200°
2100
200°
R241°
TUSLI-11D

000°
139°
31

R125°
D40.0DNH
N39 46.5
E095 32.9
4800

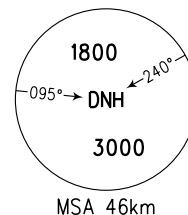
TOSAP
N39 57.4
E095 04.8

117°
4.5
VIKUP-11D

TUSLI
N39 05.0
E092 18.0

VIKUP
N39 33.8
E096 06.2

- Note:
1. Departure turn at 1800m MAX IAS 380km/h.
 2. Minimum climb gradient 3.8% for VIKUP-11D.



Changes: Airport Name.