

STANDARD DEPARTURE CHART-INSTRUMENT

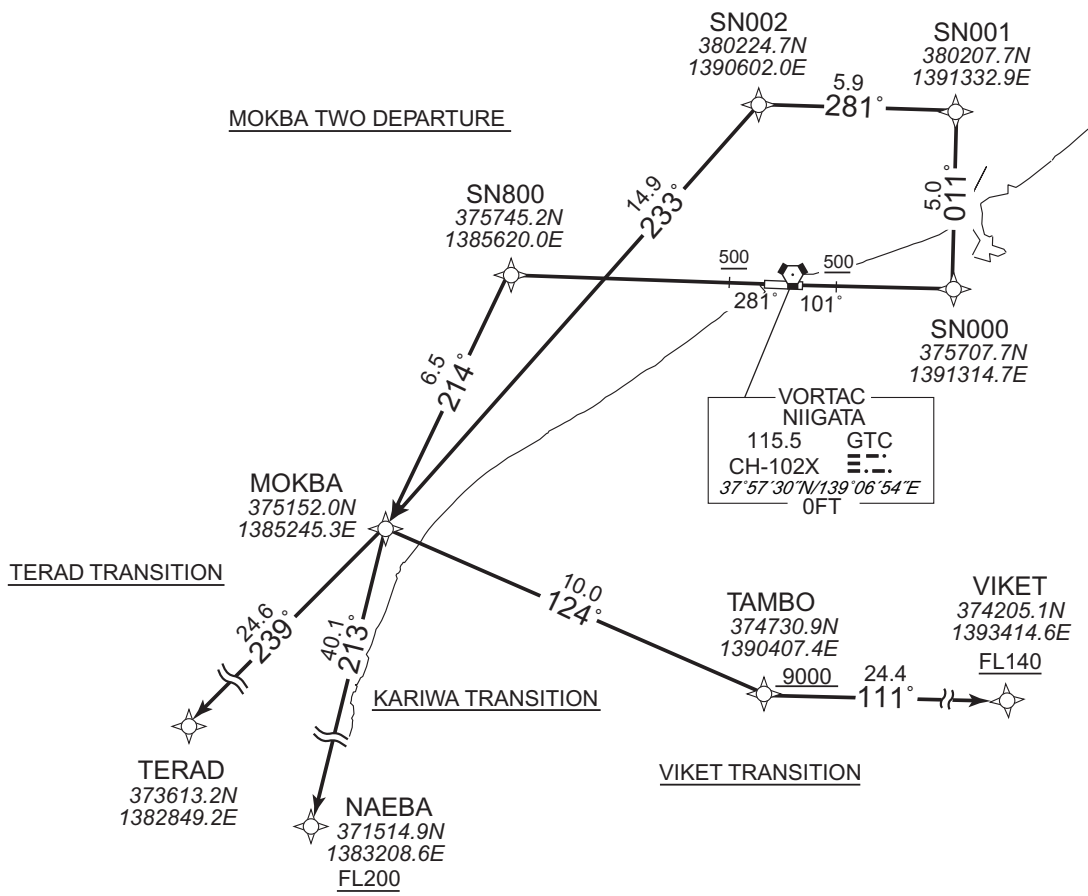
RJSN / NIIGATA

RNAV SID and TRANSITION

<b>MOKBA TWO DEPARTURE</b> <b>KARIWA TRANSITION / TERAD TRANSITION / VIKET TRANSITION</b>	<b>RNP1</b>
--	-------------

Note GNSS required.

VAR 9°W



CHANGE : Navigation Specification(Basic RNP1 → RNP1).

**MOKBA TWO DEPARTURE**  
 RWY10 : Climb on HDG101° at or above 500FT, direct to SN000, to SN001, to SN002, to MOKBA.  
 RWY28 : Climb on HDG281° at or above 500FT, direct to SN800, to MOKBA.  
 NOTE RWY10 : 5.0% climb gradient required up to 500FT.

**KARIWA TRANSITION**  
 From MOKBA, to NAEB at or above FL200.

**TERAD TRANSITION**  
 From MOKBA, to TERAD.

**VIKET TRANSITION**  
 From MOKBA, to TAMBO at or above 9000FT, to VIKET at or above FL140.

## STANDARD DEPARTURE CHART-INSTRUMENT

RJSN / NIIGATA

RNAV SID and TRANSITION

MOKBA TWO DEPARTURE

## RWY10

Serial Number	Path Descriptor	Waypoint Identifier	Fly Over	Course °M(°T)	Magnetic Variation	Distance (NM)	Turn Direction	Altitude (FT)	Speed (KIAS)	Vertical Angle	Navigation Specification
001	VA	-	-	101 (092.7)	-8.6	-	-	+500	-	-	RNP1
002	DF	SN000	-	-	-8.6	-	-	-	-	-	RNP1
003	TF	SN001	-	011 (002.7)	-8.6	5.0	-	-	-	-	RNP1
004	TF	SN002	-	281 (272.8)	-8.6	5.9	-	-	-	-	RNP1
005	TF	MOKBA	-	233 (224.9)	-8.6	14.9	-	-	-	-	RNP1

## RWY28

Serial Number	Path Descriptor	Waypoint Identifier	Fly Over	Course °M(°T)	Magnetic Variation	Distance (NM)	Turn Direction	Altitude (FT)	Speed (KIAS)	Vertical Angle	Navigation Specification
001	VA	-	-	281 (272.7)	-8.6	-	-	+500	-	-	RNP1
002	DF	SN800	-	-	-8.6	-	-	-	-	-	RNP1
003	TF	MOKBA	-	214 (205.6)	-8.6	6.5	-	-	-	-	RNP1

KARIWA TRANSITION

Serial Number	Path Descriptor	Waypoint Identifier	Fly Over	Course °M(°T)	Magnetic Variation	Distance (NM)	Turn Direction	Altitude (FT)	Speed (KIAS)	Vertical Angle	Navigation Specification
001	IF	MOKBA	-	-	-8.6	-	-	-	-	-	RNP1
002	TF	NAEBA	-	213 (204.2)	-8.6	40.1	-	+FL200	-	-	RNP1

TERAD TRANSITION

Serial Number	Path Descriptor	Waypoint Identifier	Fly Over	Course °M(°T)	Magnetic Variation	Distance (NM)	Turn Direction	Altitude (FT)	Speed (KIAS)	Vertical Angle	Navigation Specification
001	IF	MOKBA	-	-	-8.6	-	-	-	-	-	RNP1
002	TF	TERAD	-	239 (230.5)	-8.6	24.6	-	-	-	-	RNP1

VIKET TRANSITION

Serial Number	Path Descriptor	Waypoint Identifier	Fly Over	Course °M(°T)	Magnetic Variation	Distance (NM)	Turn Direction	Altitude (FT)	Speed (KIAS)	Vertical Angle	Navigation Specification
001	IF	MOKBA	-	-	-8.6	-	-	-	-	-	RNP1
002	TF	TAMBO	-	124 (115.8)	-8.6	10.0	-	+9000	-	-	RNP1
003	TF	VIKET	-	111 (102.7)	-8.6	24.4	-	+FL140	-	-	RNP1

CHANGE : Navigation Specification(Basic RNP1 → RNP1).