

STANDARD DEPARTURE CHART-INSTRUMENT

RJTH / HACHIJOJIMA

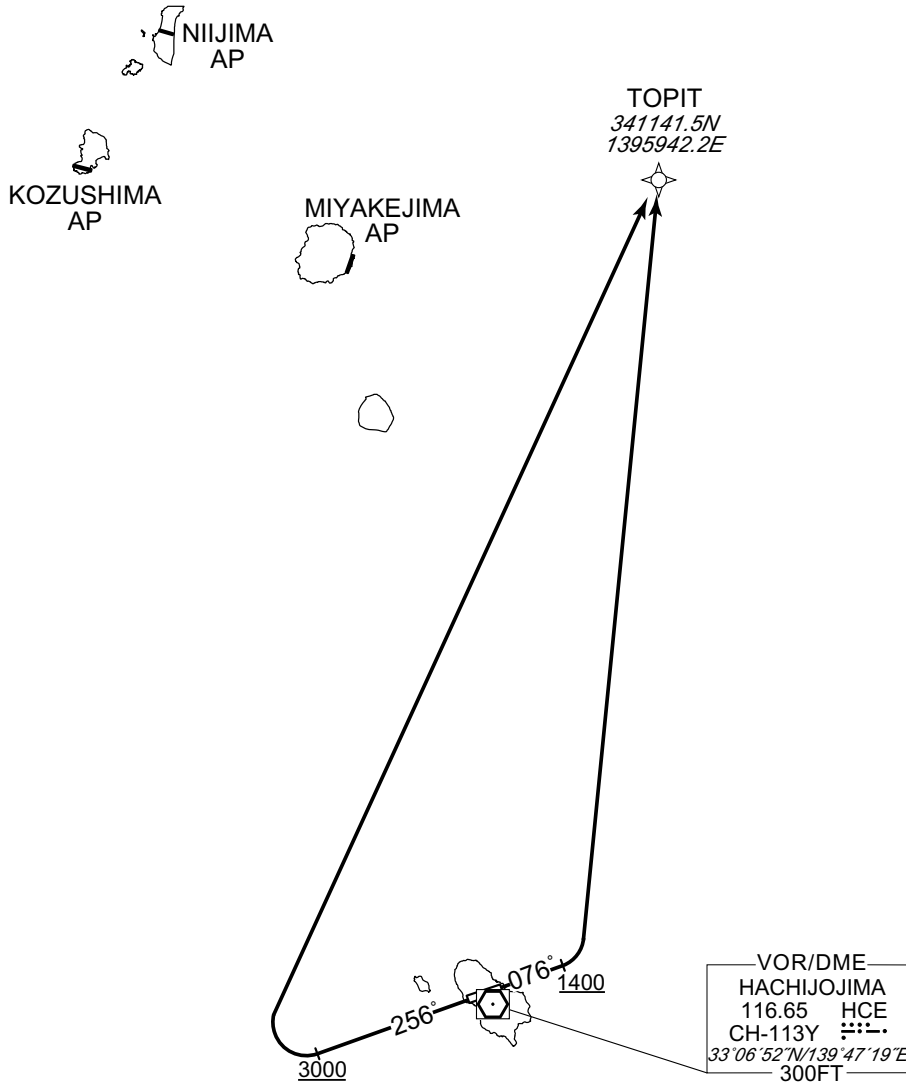
RNAV SID

TOPIT ONE DEPARTURE

RNP1

Note GNSS required.

VAR 7° W



RWY08 : Climb on HDG 076° at or above 1400FT, turn left direct to TOPIT.
 RWY26 : Climb on HDG 256° at or above 3000FT, turn right direct to TOPIT.

RWY08

Serial Number	Path Descriptor	Waypoint Identifier	Fly Over	Course °M(°T)	Magnetic Variation	Distance (NM)	Turn Direction	Altitude (FT)	Speed (KIAS)	Vertical Angle	Navigation Specification
001	VA	-	-	076 (069.5)	-6.7	-	-	+1400	-	-	RNP1
002	DF	TOPIT	-	-	-6.7	-	L	-	-	-	RNP1

RWY26

Serial Number	Path Descriptor	Waypoint Identifier	Fly Over	Course °M(°T)	Magnetic Variation	Distance (NM)	Turn Direction	Altitude (FT)	Speed (KIAS)	Vertical Angle	Navigation Specification
001	VA	-	-	256 (249.5)	-6.7	-	-	+3000	-	-	RNP1
002	DF	TOPIT	-	-	-6.7	-	R	-	-	-	RNP1

CHANGE : Navigation Specification(Basic RNP1 → RNP1).