

# HI-TACAN RWY 15R

TACAN SHP Chan 45	APCH CRS 149°	Rwy ldg 13,100 TDZE: 998 Arprt Elev 1019
----------------------	------------------	------------------------------------------------

[USAF]

SHEPPARD AFB/WICHITA FALLS MUNI (KSPS)

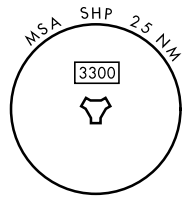
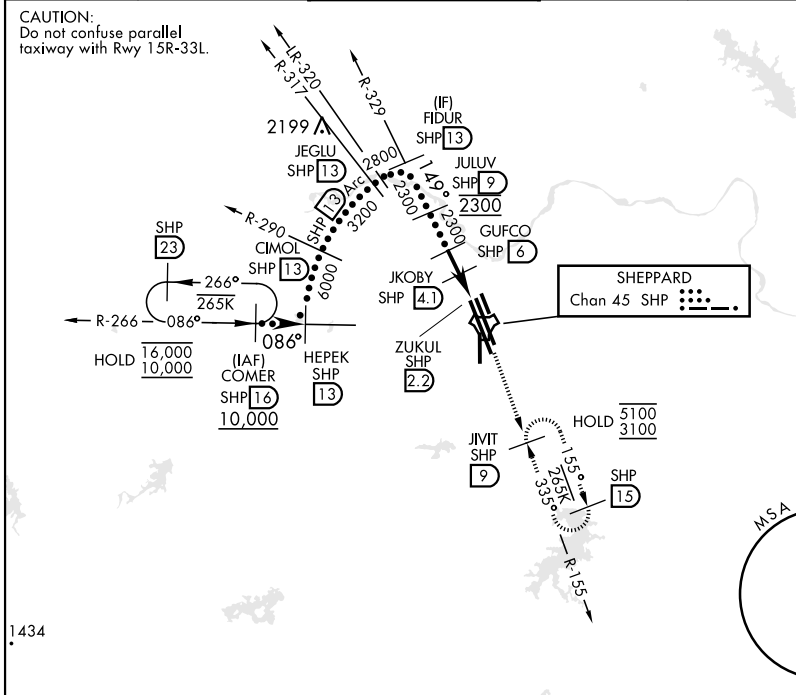
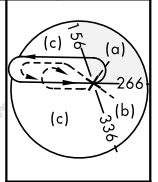
▼ \* When ALS inop, increase CAT CDE vis to 1 1/4 miles.  
 \*\* Circling not authorized W of Rwy 15R-33L.



MISSED APPROACH: Climb and maintain 3100, intercept SHP TACAN R-155 to SHP R-155/9 DME (JVIT) and hold.

ATIS★ 132.05 269.9	APP CON 118.2 269.025	TOWER★ 119.75 279.525 (CTAF)	GND CON 125.5 289.4	CLNC DEL 121.2 282.225	ASR
-----------------------	--------------------------	---------------------------------	------------------------	---------------------------	-----

CAUTION:  
Do not confuse parallel taxiway with Rwy 15R-33L.

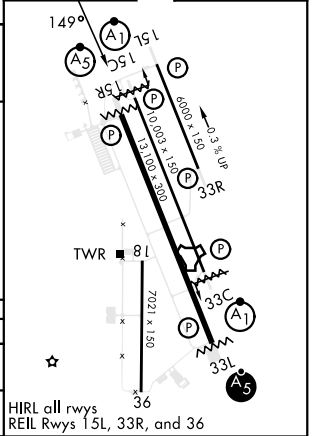
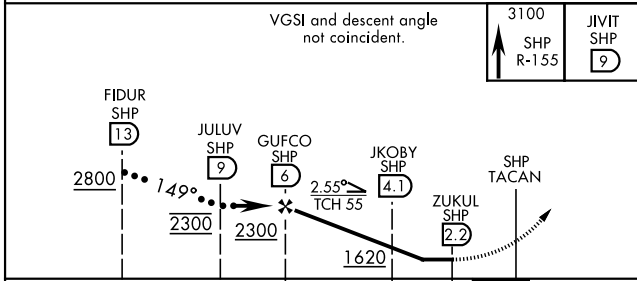


SC-2, 20 MAR 2025 to 17 APR 2025

SC-2, 20 MAR 2025 to 17 APR 2025

EMERG SAFE ALT 100 NM 4600

ELEV 1019	TDZE 998
-----------	----------



CATEGORY	C	D	E
S-15R*	1420-3/4	422 (500-3/4)	
CIRCLING**	1480-1 1/2 (500-1 1/2)	2100-3	1081 (1100-3)

HIRL all rwys  
REIL Rwy 15L, 33R, and 36

# HI-TACAN RWY 15R