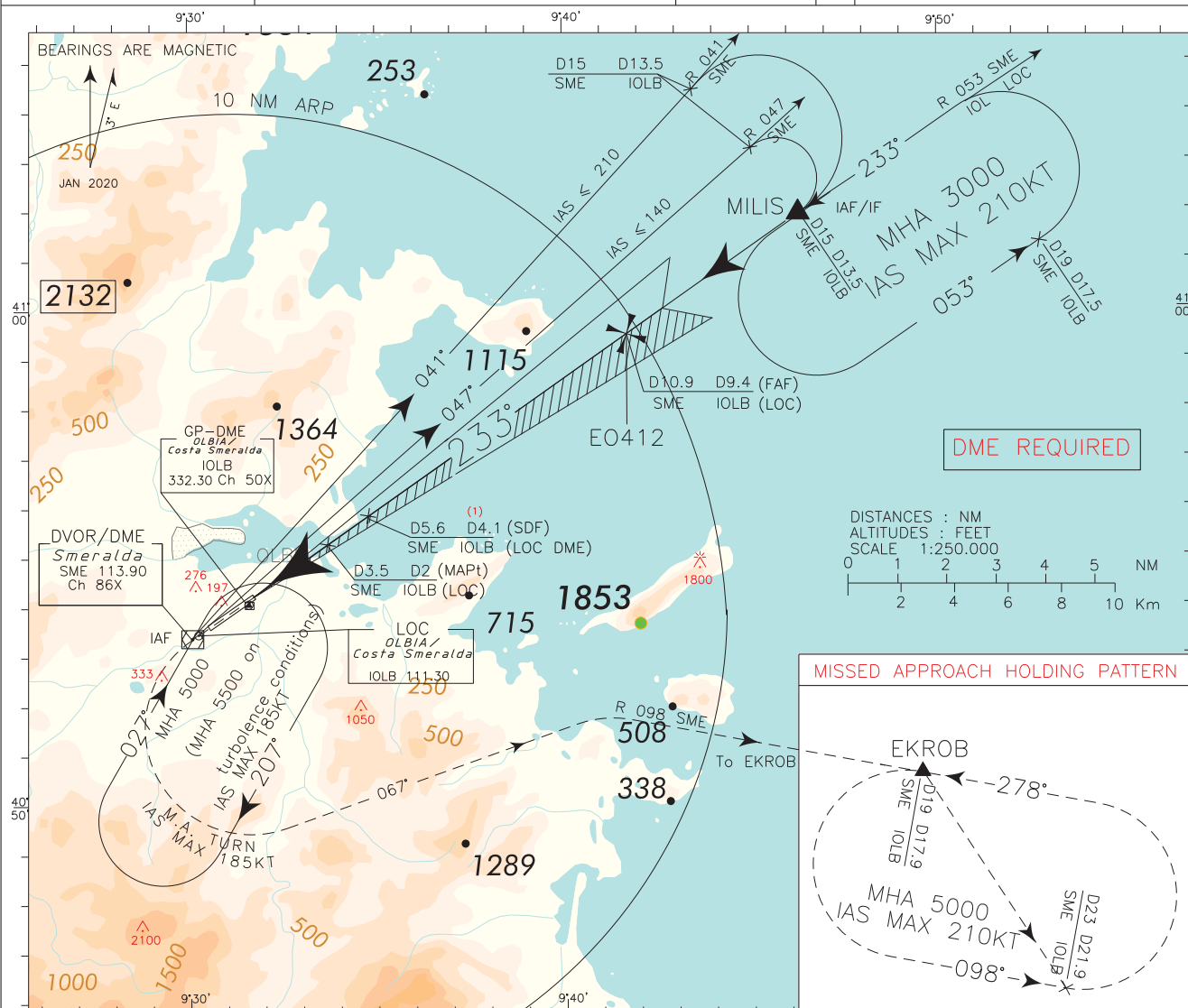


ICAO - INSTRUMENT APPROACH CHART

REMARK (1) OM position replaced by D4.1 IOLB DME	APP	Roma Radar	125.950 (127.125) 118.975	AD ELEV	L E O	OLBIA/ COSTA SMERALDA ILS or LOC RWY 23
	TWR	Olbia TWR		37		
	ATIS	Olbia arrival and departure information	113.900			

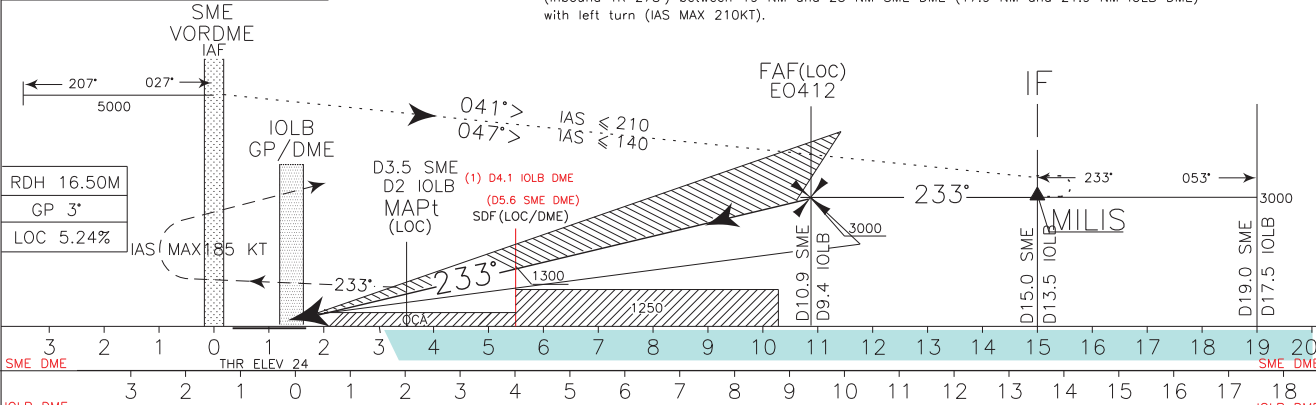
DOC 8168 ED 6 - 2014 - AMDT 8

CHANGE: REVISED CHART



TRANSITION ALT 6000

MISSED APPROACH: At 3.5 NM SME DME (2 NM IOLB DME) proceed on TR 233° and climb to 5000 ft. Over SME VOR turn left (IAS MAX 185 KT) on TR 067° to join RDL 098 SME VOR to EKROB. Hold on RDL 098 SME VOR (inbound TR 278°) between 19 NM and 23 NM SME DME (17.9 NM and 21.9 NM IOLB DME) with left turn (IAS MAX 210KT).



STRAIGHT IN APPROACH	OCA(OCH)				CIRCLING SECTORS NOT ALLOWED	GS	FT PER MIN	DME	ALT (HGT)	MNM SECT ALT
	A	B	C	D						
ILS M.A. MNM CLIMB GRADIENT 5%	370 (346)	380 (356)	390 (366)	400 (376)		80	425	8	2560 (2536)	
ILS M.A. MNM CLIMB GRADIENT 2.5%	730 (706)	740 (716)	750 (726)	760 (736)						
LOC	750 (726)									
DME	750 (726)									
CIRCLING APPROACH (*) (see warning)	900 (863)	1200 (1163)	1600 (1563)	2030 (1993)						
					160	849	3	960 (936)		