

LOC/DME RWY 31

LOC I-PLH 111.7	APCH CRS 308°	Rwy ldg 10,000 TDZE 1276 Arprt Elev 1291	[USAF]	TINKER AFB (KTIK)
---------------------------	-------------------------	---	--------	-------------------

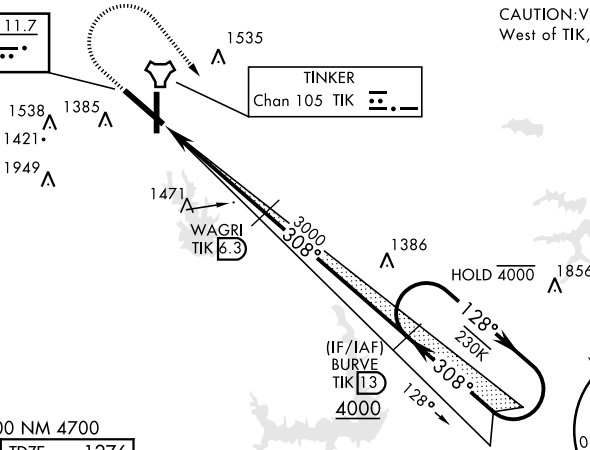
RADAR required	SALS (A2)	† MISSED APPROACH: Climb straight ahead to 2500, then turn right to 4000 direct I-PLH and TIK 13 DME (BURVE) and hold.
----------------	---------------------	--

ATIS ★ 270.1	OKE CITY APP CON 120.45 288.325	TOWER 124.45 251.05	GND CON 121.8 275.8	CLNC DEL 119.7 335.8	ASR
------------------------	---	-------------------------------	-------------------------------	--------------------------------	-----

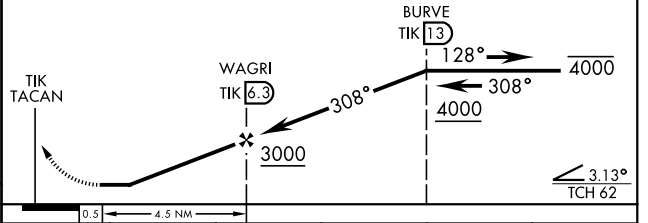
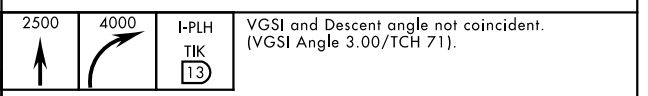
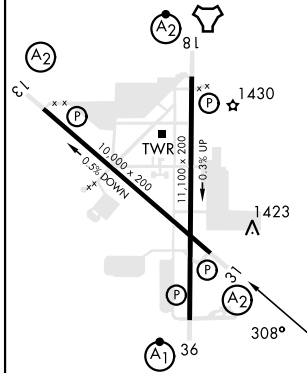
When VGSI inop, procedure NA at night

† Missed approach requires use of RNAV or ATC RADAR monitoring.

LOCALIZER **111.7**
I-PLH



EMERG SAFE ALT 100 NM 4700
ELEV 1291 TDZE 1276



HIRL all rwys	FAF to MAP 4.5 NM					
	Knots	60	90	120	150	180
	Min:Sec	4:30	3:00	2:15	1:48	1:30
CIRCLING **	1840-1	549	(600-1)	1960-1½	1980-2½	1960-2½
				669 (700-1½)	689 (700-2½)	669 (700-2½)

LOC/DME RWY 31

SC-1, 20 MAR 2025 to 17 APR 2025

SC-1, 20 MAR 2025 to 17 APR 2025