

MIPS

INSTRUMENT DEPARTURE CHART

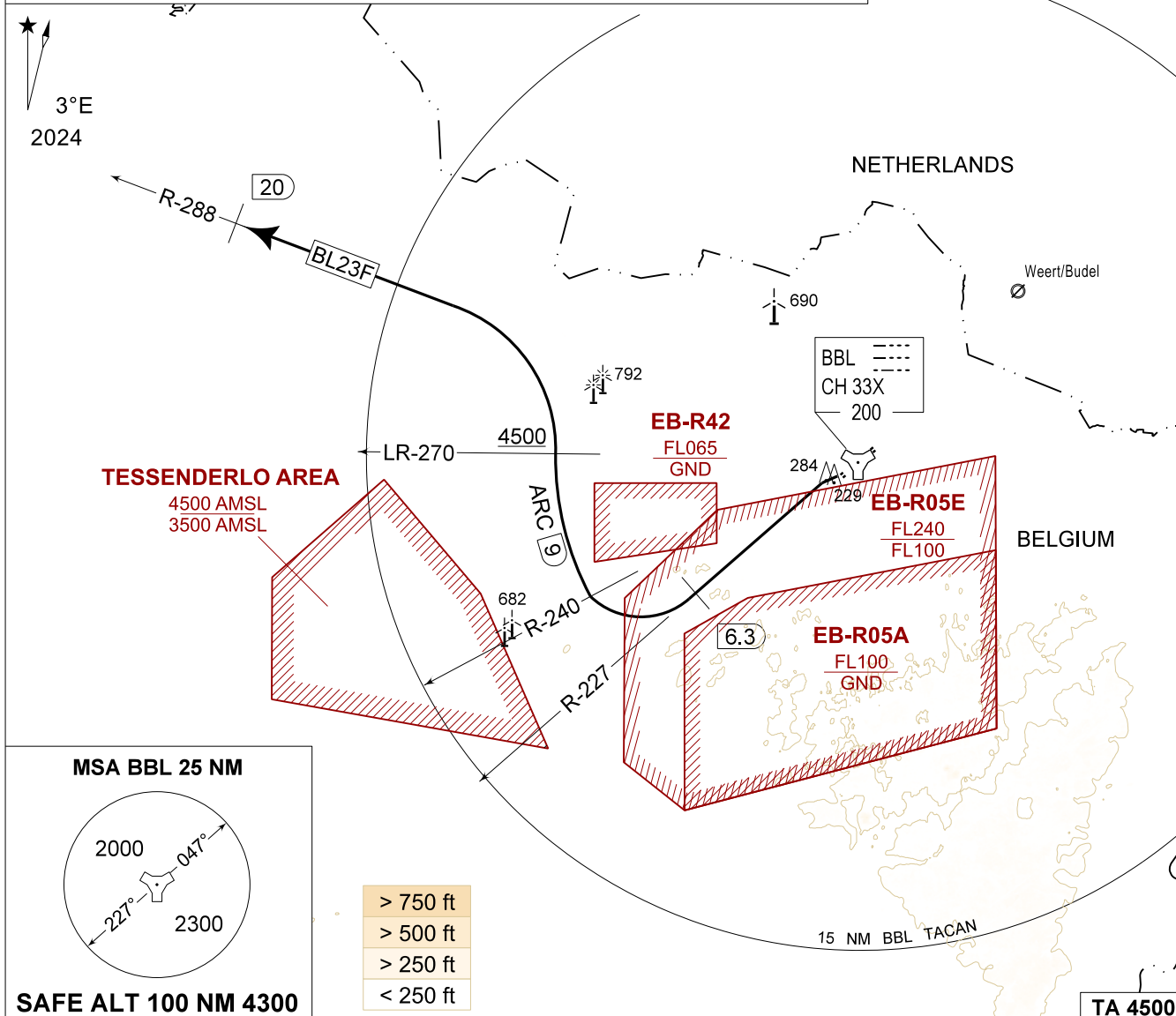
AD ELEV 192

**BL 23F
KLEINE-BROGEL (EBBL)**

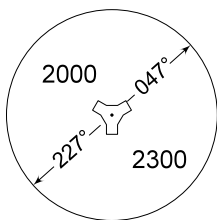
KLEINE-BROGEL GND 362.775 122.100	KLEINE-BROGEL TWR 248.075 134.105		KLEINE-BROGEL APP 337.600 134.480		BELGA RADAR 374.400 129.325					
TACAN BBL - CH 33X	RWY 23	PDG 4.04% 2.31°		From-To DER-TRL	120 500	180 740	240 990	300 1230	360 1480	Reason ATC

CAUTION:

- a) IF TESSENDERLO AREA IS ACTIVE, PASS BBL R-240 AT MAX 3000 FT AMSL
- b) ATC MONITORING REQUIRED TO REMAIN CLEAR OF EB-R42



MSA BBL 25 NM



SAFE ALT 100 NM 4300

> 750 ft
> 500 ft
> 250 ft
< 250 ft

TA 4500

BL 23F
(RWY 23)

30

- Climb RWY heading and contact EBBL APP.
- Intercept R-227 outbound BBL TACAN.
- At 6.3 DME turn right to follow the arc at 9 DME BBL.
- Pass R-240 at or below 3000 FT AMSL if Tessenderlo area active.
- Pass R-270 on the ARC at or above 4500 FT AMSL.
- Contact BELGA RADAR as instructed.
- Passing R-270, turn left to intercept R-288 outbound BBL TACAN then follow R-288 till 20 DME.

CHANGE: General revision

BEL DEFENCE, AIR COMPONENT 28-NOV-2024 - THS

BL 23F

51°10.10' N
005°28.19' E

KLEINE-BROGEL (EBBL)