

STANDARD DEPARTURE CHART - INSTRUMENT

RJCH / HAKODATE

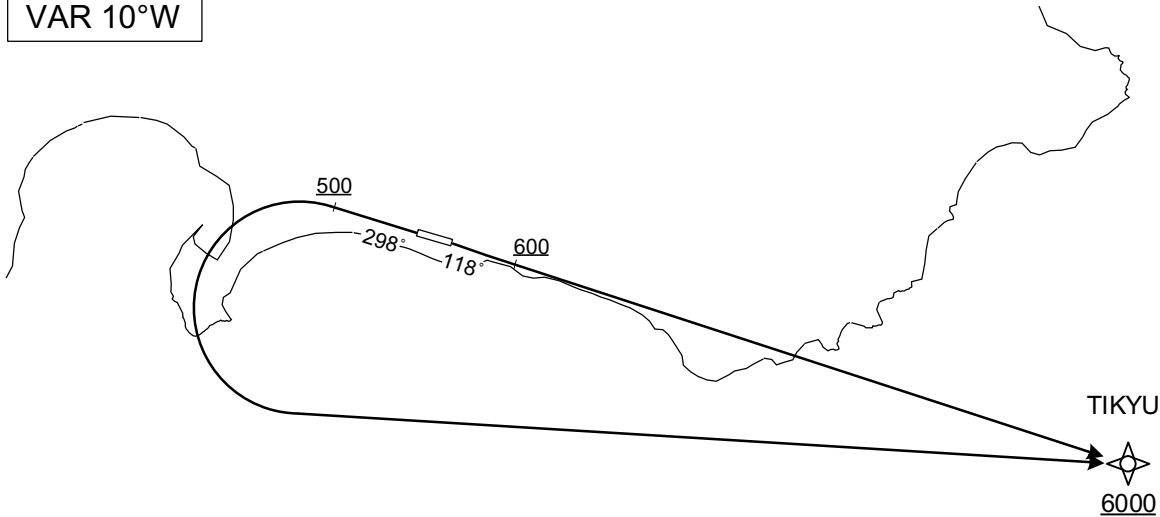
RNAV SID

TOI ONE DEPARTURE

RNP1

Note GNSS required.

VAR 10°W



RWY12 : Climb on HDG118° at or above 600FT, direct to TIKYU at or above 6000FT.  
 RWY30 : Climb on HDG298° at or above 500FT, turn left direct to TIKYU at or above 6000FT.

Note RWY12 : 6.0% climb gradient required up to 1500FT.  
 OBST ALT 1247FT located at 3.6NM 101° FM end of RWY12.  
 RWY30 : 5.2% climb gradient required up to 1600FT.  
 OBST ALT 1294FT located at 4.6NM 268° FM end of RWY30.

RWY12

Serial Number	Path Descriptor	Waypoint Identifier	Fly Over	Course °M(°T)	Magnetic Variation	Distance (NM)	Turn Direction	Altitude (FT)	Speed (KIAS)	Vertical Angle	Navigation Specification
001	VA	-	-	118 (108.1)	-9.6	-	-	+600	-	-	RNP1
002	DF	TIKYU	-	-	-9.6	-	-	+6000	-	-	RNP1

RWY30

Serial Number	Path Descriptor	Waypoint Identifier	Fly Over	Course °M(°T)	Magnetic Variation	Distance (NM)	Turn Direction	Altitude (FT)	Speed (KIAS)	Vertical Angle	Navigation Specification
001	VA	-	-	298 (288.1)	-9.6	-	-	+500	-	-	RNP1
002	DF	TIKYU	-	-	-9.6	-	L	+6000	-	-	RNP1

Waypoint Coordinates

Waypoint Identifier	Coordinates
TIKYU	414102.5N / 1411021.5E

CHANGE : Waypoint Coordinates added.