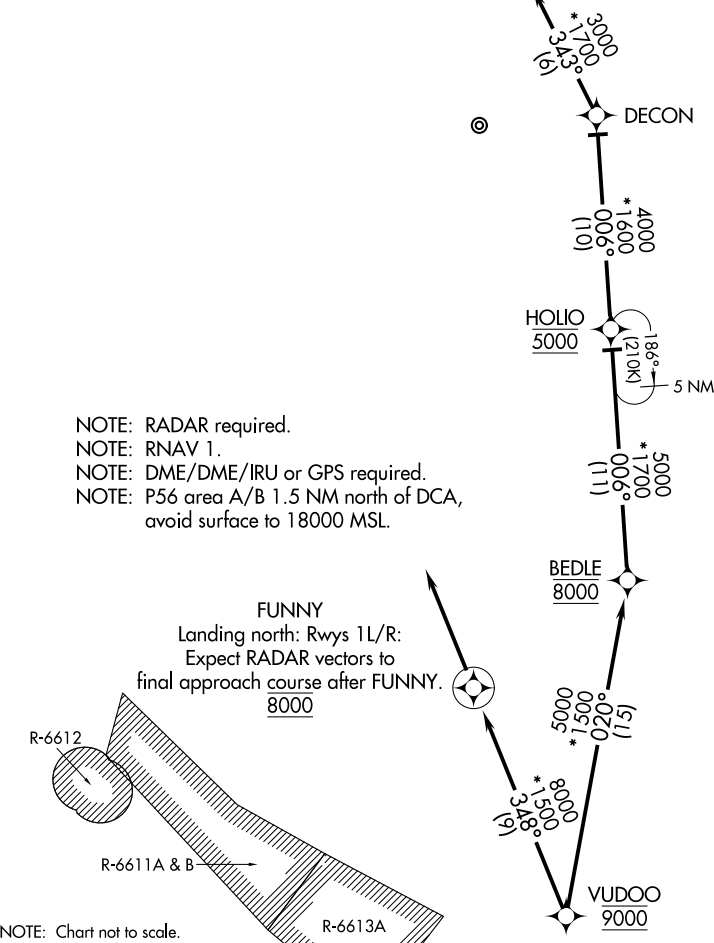


VUDOO TWO ARRIVAL (RNAV) Arrival Routes

POTOMAC APP CON
126.4 282.375
D-ATIS
133.675 251.05
TOWER
118.4 349.0

REVOE
Landing south: Rwy 19L/R:
Expect RADAR vectors to
final approach course after REVOE.



NE-3, 20 MAR 2025 to 17 APR 2025

NE-3, 20 MAR 2025 to 17 APR 2025

ARRIVAL ROUTE DESCRIPTION

LANDING NORTH RWYS 1L/R: From VUDOO on track 348° to cross FUNNY at 8000, then on track 348°. Expect RADAR vectors to final approach course.

LANDING SOUTH RWYS 19L/R: From VUDOO on track 020° to cross BEDLE at 8000, then on track 006° to cross HOLIO at 5000, then on track 006° to DECON, then on track 343° to REVOE, then on track 343°. Expect RADAR vectors to final approach course.

VUDOO TWO ARRIVAL (RNAV) Arrival Routes