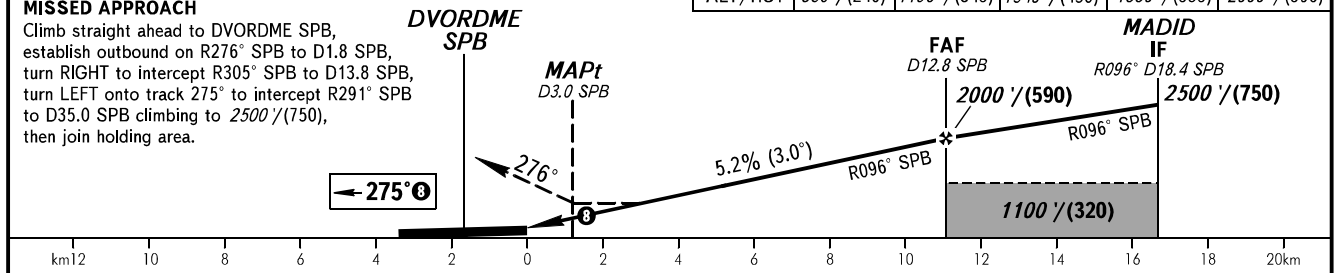
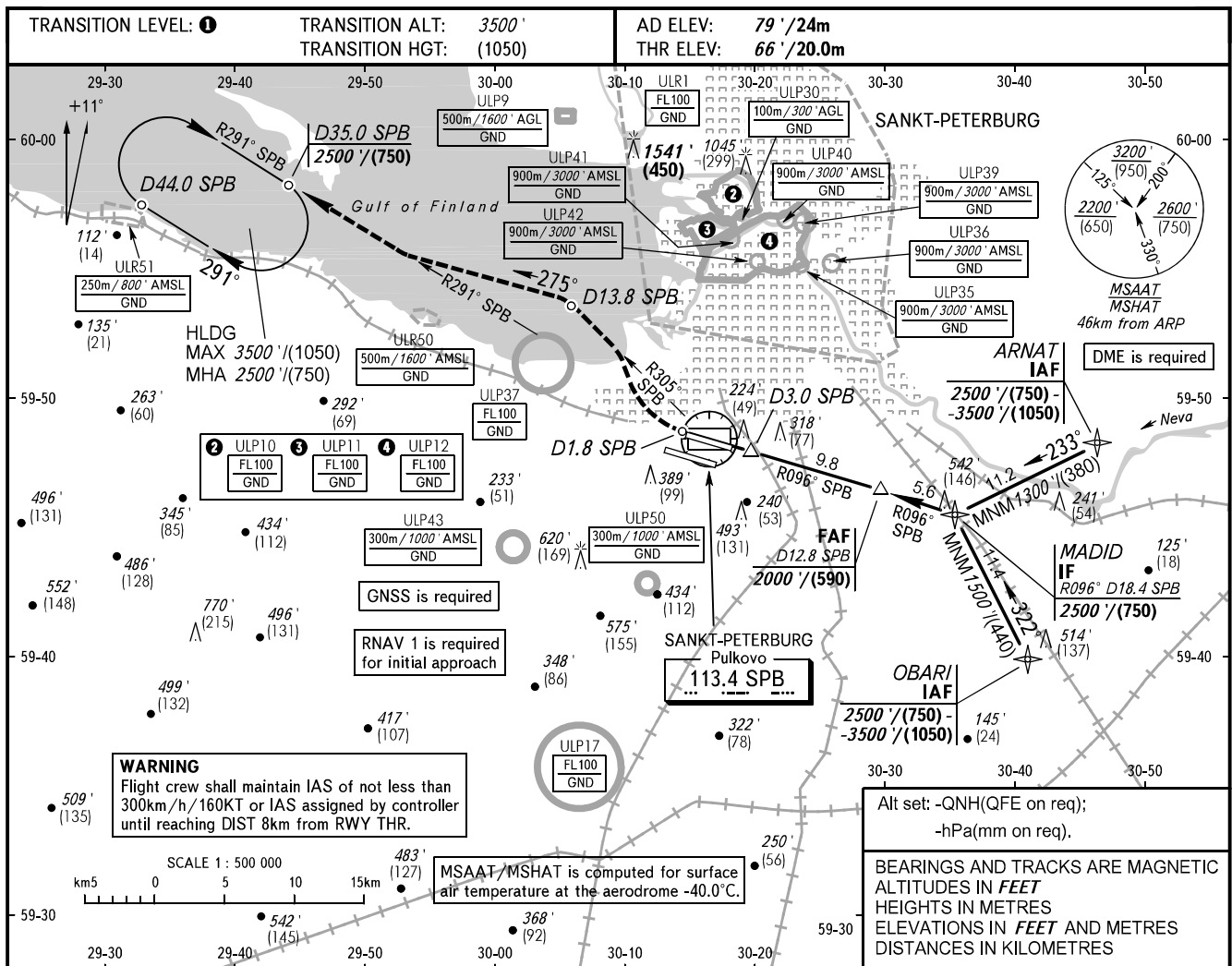


**INSTRUMENT  
APPROACH  
CHART - ICAO**

RADAR **120.300**  
TOWER **118.100**

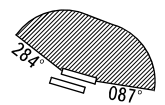
**SANKT-PETERBURG, RUSSIA**  
PULKOVO  
DVOR RWY 28R



**1** TRANSITION LEVEL:  
 - FL050 when QNH is 996 hPa (747mm mercury column) or above;  
 - FL060 when QNH is 960 hPa (720mm mercury column) or above, but less than 996 hPa (747mm mercury column);  
 - FL070 when QNH is less than 960 hPa (720mm mercury column).

**WARNING**  
 Visual manoeuvring to the north of the AD is PROHIBITED.

**NOTE:**  
 1. The length of intermediate approach is less than 9.3km.  
 2. MAPt at D3.0 SPB. Timing not authorized for defining MAPt.



CHANGE: WARNING