

INSTRUMENT APPROACH CHART - ICAO PLAN VIEW SCALE: 1:350 000

SANDNESSJØEN

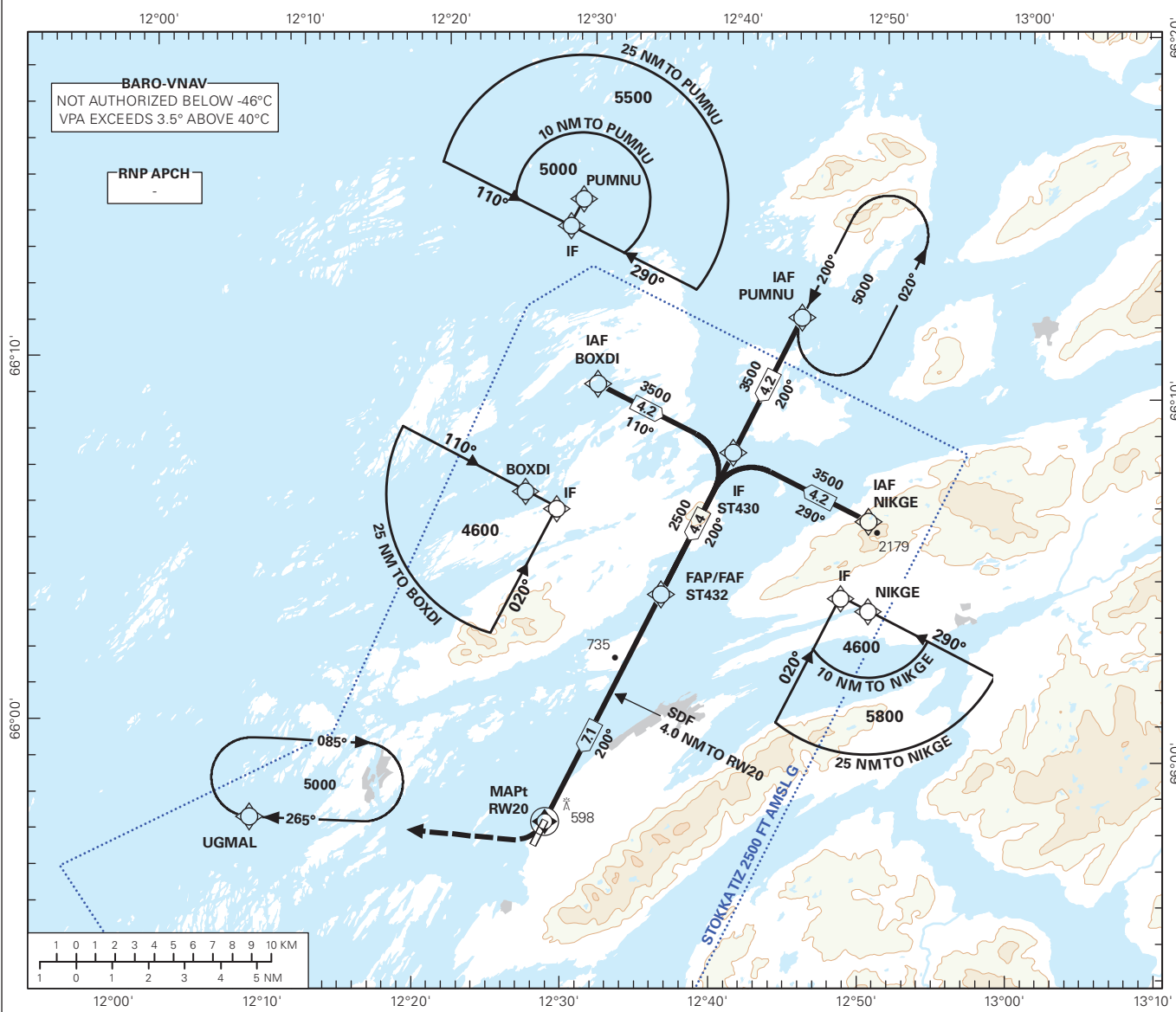
STOKKA

RNP Z RWY 20

TRANSITION ALTITUDE
7000

APP: 127.900	AD ELEV: 58	
AFIS: 120.300	THR ELEV: 54	DIST IN NM
VDF: 120.300	HGT RELATED TO THR RWY 20	ELEV, ALT AND HGT IN FT
	CIRCLING HGT RELATED TO AD ELEV	
	BEARINGS ARE MAGNETIC - VAR 5° E (2020)	

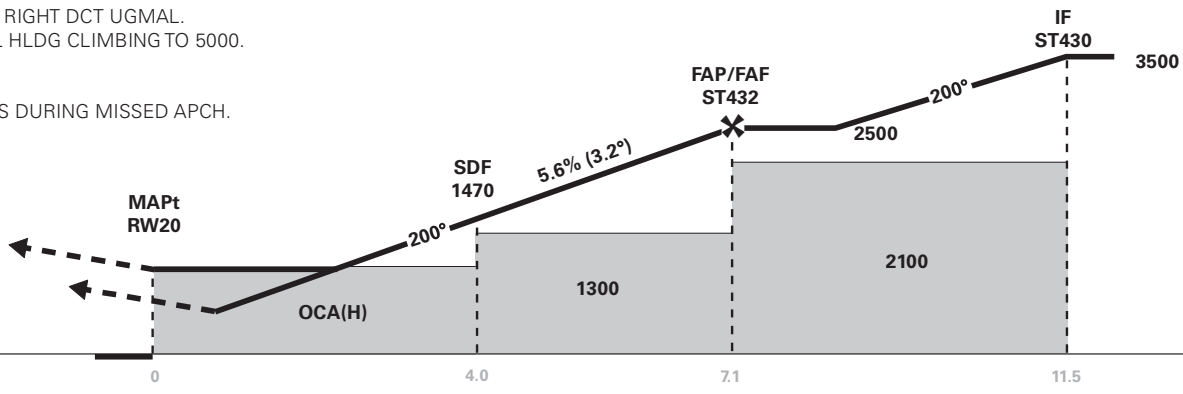
ATS AIRSPACE CLASSIFICATION: REF ENR 1.4



DIST TO RWY20	10	9	8	7	6	5	4	3
ALT (HGT)	-	-	-	2480 (2426)	2140 (2086)	1810 (1756)	1470 (1416)	1130 (1076)

MISSED APCH:
AT MAPt TURN RIGHT DCT UGMAL.
ENTER UGMAL HLDG CLIMBING TO 5000.

NOTE:
MAX 130 KT IAS DURING MISSED APCH.



CAT OF ACFT	A		B		C		D	
	LNNAV/VNAV 2.5%*	LNNAV/VNAV 3.0%*	LNNAV 2.5%*	LNNAV 3.0%*				
OCA(H) STRAIGHT - IN	1040 (986)	710 (656)	1300 (1246)	850 (796)	-	-	-	-
				1300 (1242)	-	-	-	-
CIRCLING								

NOTE: *MNM MISSED APCH CLIMB GRADIENT. CIRCLING W OF AD ONLY.

CHANGES: THR ELEV, EDITORIALS.