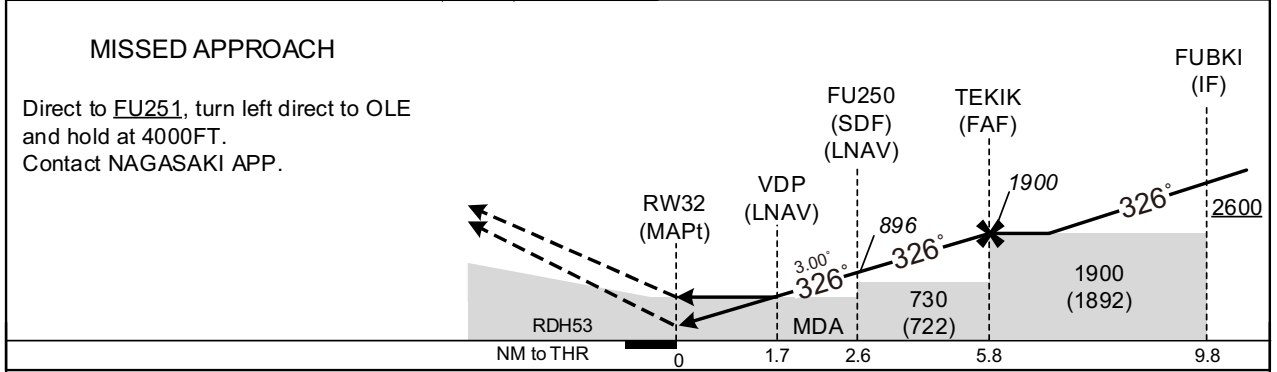
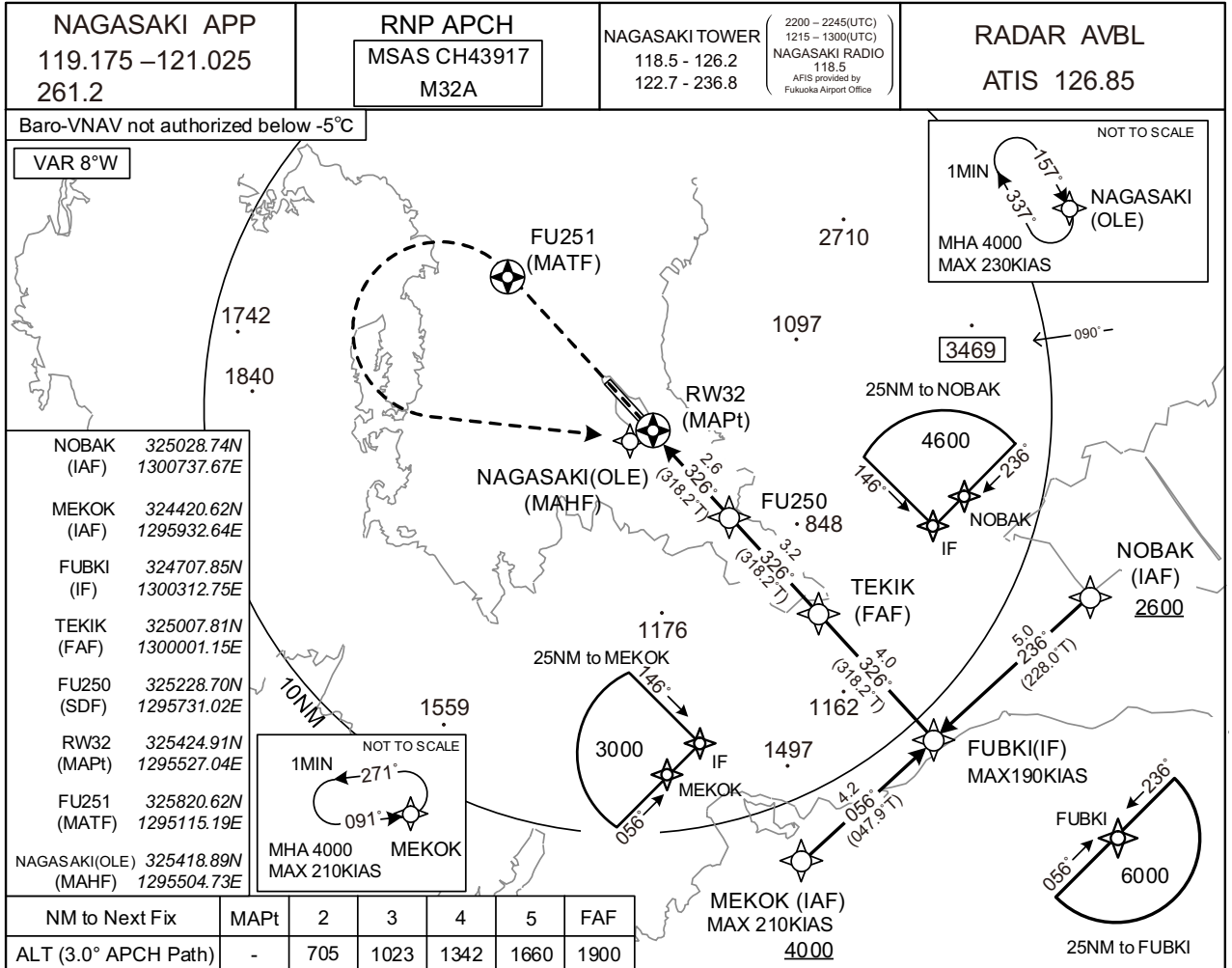


INSTRUMENT APPROACH CHART

RJFU / NAGASAKI

RNP RWY32



Missed APCH climb gradient MNM 5.0%

CAT	MINIMA		THR elev. 15		AD elev. 8		CIRCLING	
	LPV	RVR/CMV	LNAV/VNAV	LNAV	LNAV	RVR/CMV	MDA(H)	VIS
A	288(273)	800	580(565)	1000	580(572)	1000	620(612)	1600
B	297(282)			1200		1200		
C	307(292)			1600		1600		
D	317(302)	1400			1600	890(882)	3200	

MINIMA with Missed APCH climb gradient of 2.5% are not established.

CHANGE : Description of VAR.

INSTRUMENT APPROACH CHART

RJFU / NAGASAKI

RNP RWY32

FAS DATA BLOCK

Operation type	0	LTP/FTP ellipsoidal height	+00370
SBAS service provider identifier	2	FPAP latitude	325537.2480N
Airport identifier	RJFU	FPAP longitude	1295409.7775E
Runway	32	Threshold crossing height	00016.2
Approach performance designator	0	TCH units selector	1
Route indicator		Glide path angle	03.00
Reference path data selector	0	Course width at threshold	105.00
Reference path ID	M32A	∠ length offset	0000
LTP/FTP latitude	325424.8850N	HAL	40.0
LTP/FTP longitude	1295527.0410E	VAL	50.0
CRC remainder	10898D02		

Required additional data

LTP/FTP orthometric height	4.8
----------------------------	-----

CHANGE : Description of FAS DATA BLOCK ITEM(CRC remainder).