

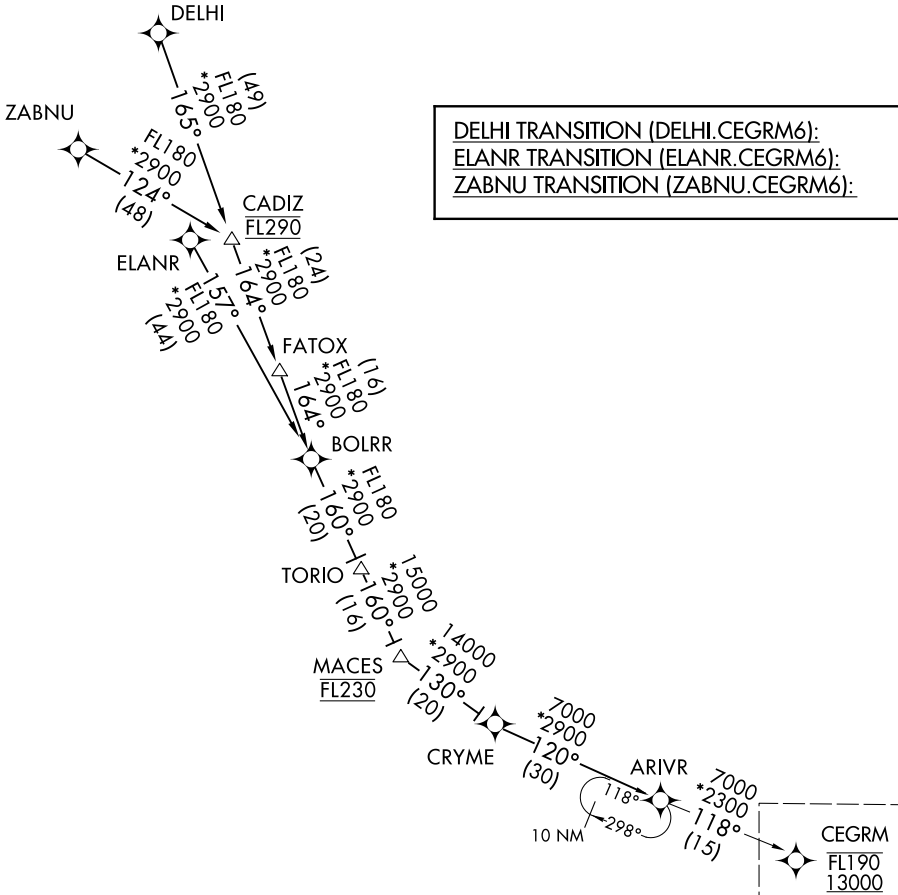
CEGRM SIX ARRIVAL (RNAV) Transition Routes

CINCINNATI/NORTHERN KENTUCKY INTL (CVG)
COVINGTON, KENTUCKY

CINCINNATI APP CON
119.7 363.15 (090°-269°)
123.875 363.15 (270°-089°)
D-ATIS 134.375

RNAV 1 - DME/DME/IRU or GPS.

RADAR required.



SE-1, 20 MAR 2025 to 17 APR 2025

SE-1, 20 MAR 2025 to 17 APR 2025

NOTE: ELANR TRANSITION for use by Chicago area departures only or as assigned by ATC.

NOTE: Chart not to scale.

(CONTINUED ON FOLLOWING PAGE)

CEGRM SIX ARRIVAL (RNAV) Transition Routes

COVINGTON, KENTUCKY