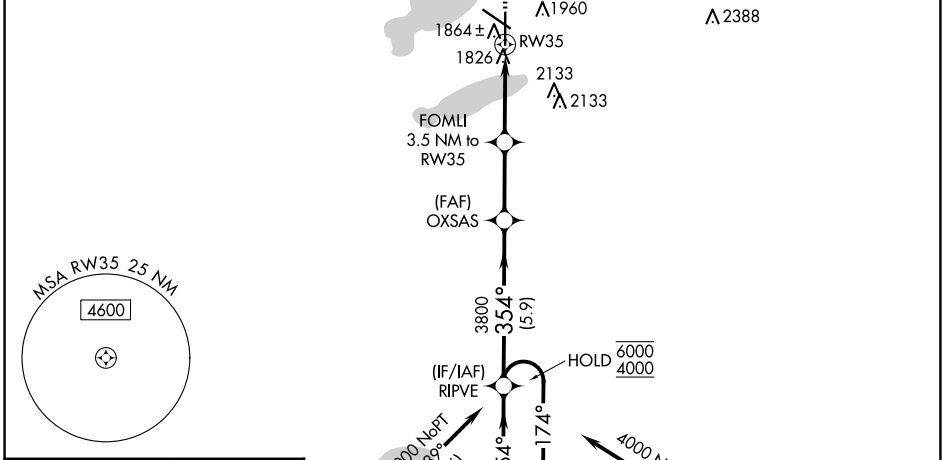
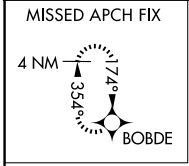


WAAS CH <b>82614</b> <b>W35A</b>	APP CRS <b>354°</b>	Rwy Idg TDZE <b>1745</b> Apt Elev <b>1749</b>
--	------------------------	---

# RNAV (GPS) RWY 35

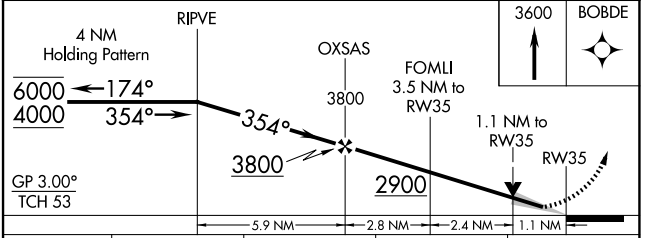
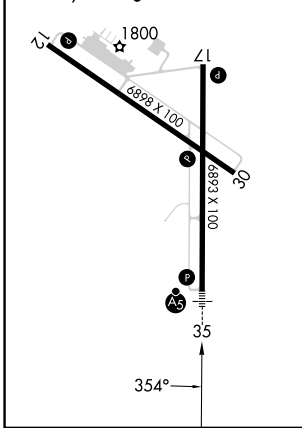
WATERTOWN RGNL (ATY)

RNP APCH - GPS.		MALSR 	MISSED APPROACH: Climb to 3600 direct BOBDE and hold.
ASOS <b>126.625</b>		MINNEAPOLIS CENTER <b>128.5 306.2</b>	UNICOM <b>123.05 (CTAF) 0</b>



ELEV 1749	<b>D</b>	TDZE 1745
-----------	----------	-----------

REIL Rws 12, 17 and 30  
HIRL Rwy 17-35  
MIRL Rwy 12-30



CATEGORY	A	B	C	D
LPV DA	1945-½		200 (200-½)	
LNAV/VNAV DA	2180-¾		435 (500-¾)	
LNAV MDA	2160-½ 415 (500-½)		2160-¾ 415 (500-¾)	
<b>C</b> CIRCLING	2260-1 511 (600-1)		2500-2¼ 751 (800-2¼) 2500-2½ 751 (800-2½)	

NC-1, 20 MAR 2025 to 17 APR 2025

NC-1, 20 MAR 2025 to 17 APR 2025