

LOC/DME I-PSC 108.7 Chan 24	APP CRS 211°	Rwy Idg TDZE Apt Elev	7110 403 410
--	------------------------	-----------------------------	---

ILS or LOC RWY 21R

TRI-CITIES (PSC)

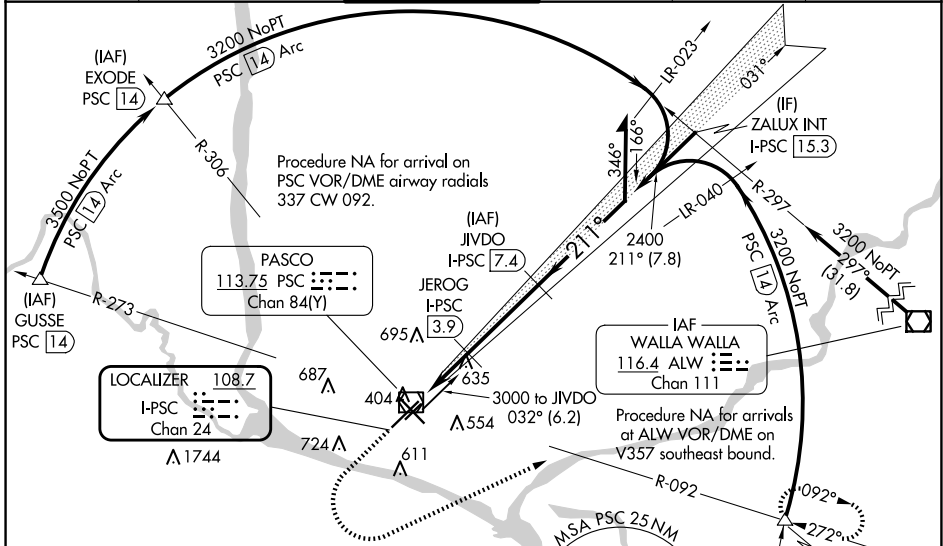
DME required for LOC only.
DME required for procedure entry at GUSSE, EXODE, CITYS, PSC VOR/DME.

▽ VDP NA when using Hermiston altimeter setting. For inop ALS when using Hermiston altimeter setting, increase S-ILS 21R all Cats visibility to RVR 4500, increase S-LOC 21R Cats C and D visibility to 1¼ SM. When local altimeter setting not received, use Hermiston altimeter setting: increase DA to 698 feet and all MDAs 100 feet; increase S-LOC 21R Cat C and D visibility ¾ SM and Circling Cat C and D visibility ¼ SM. * RVR 1800 authorized with use of FD or AP or HUD to DA (NA when using Hermiston altimeter setting).

MALSR

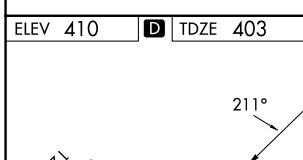
MISSED APPROACH:
Climb to 1200 then climbing left turn to 3200 on heading 050° and PSC VOR/DME R-092 to CITYS INT/PSC VOR/DME 14 DME and hold.

ATIS 125.65	SPOKANE APP CON * 128.75 377.2	TRI-CITIES TOWER * 135.3 (CTAF) 323.3	GND CON 121.8	CLNC DEL 120.0	UNICOM 122.95
-----------------------	--	---	-------------------------	--------------------------	-------------------------



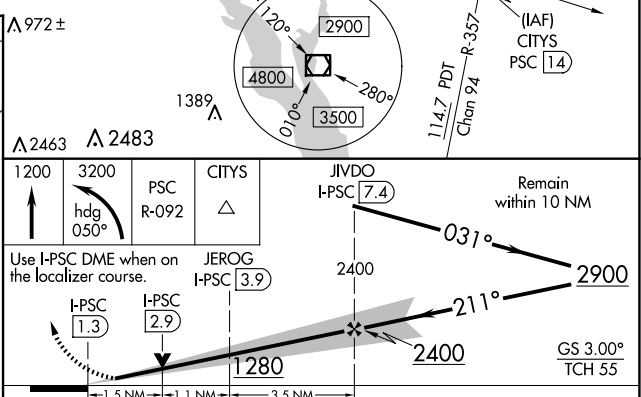
NW-1, 20 MAR 2025 to 17 APR 2025

NW-1, 20 MAR 2025 to 17 APR 2025



ELEV 410	D	TDZE 403
----------	----------	----------

REIL Rwy 3L and 12
MIRL Rwy 12-30
HIRL Rwy 3L-21R



CATEGORY	A	B	C	D
S-ILS 21R*	603/24 200 (200-½)			
S-LOC 21R	940/24	537 (600-½)	940/55	537 (600-1)
C CIRCLING	940-1	530 (600-1)	1040-1¾ 630 (700-1¾)	1100-2¼ 690 (700-2¼)