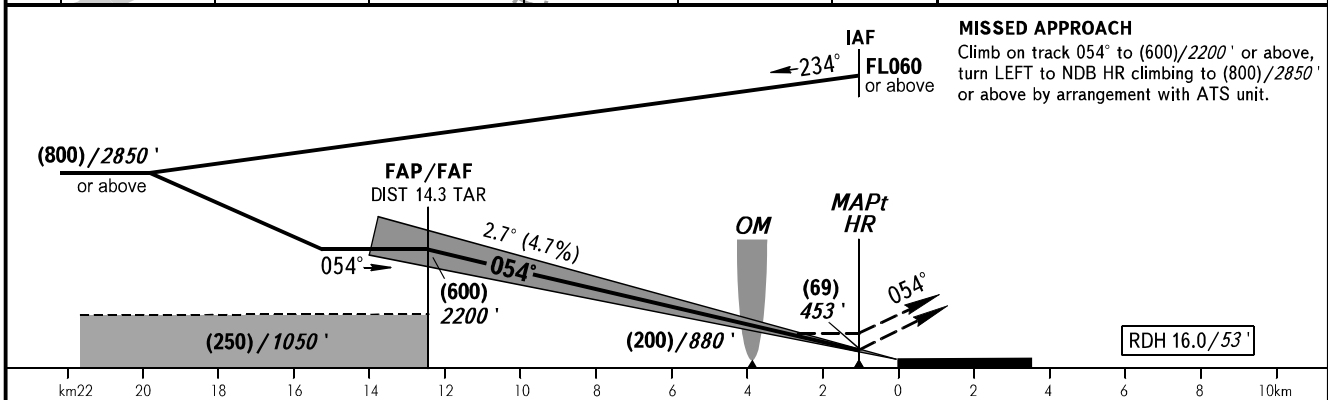
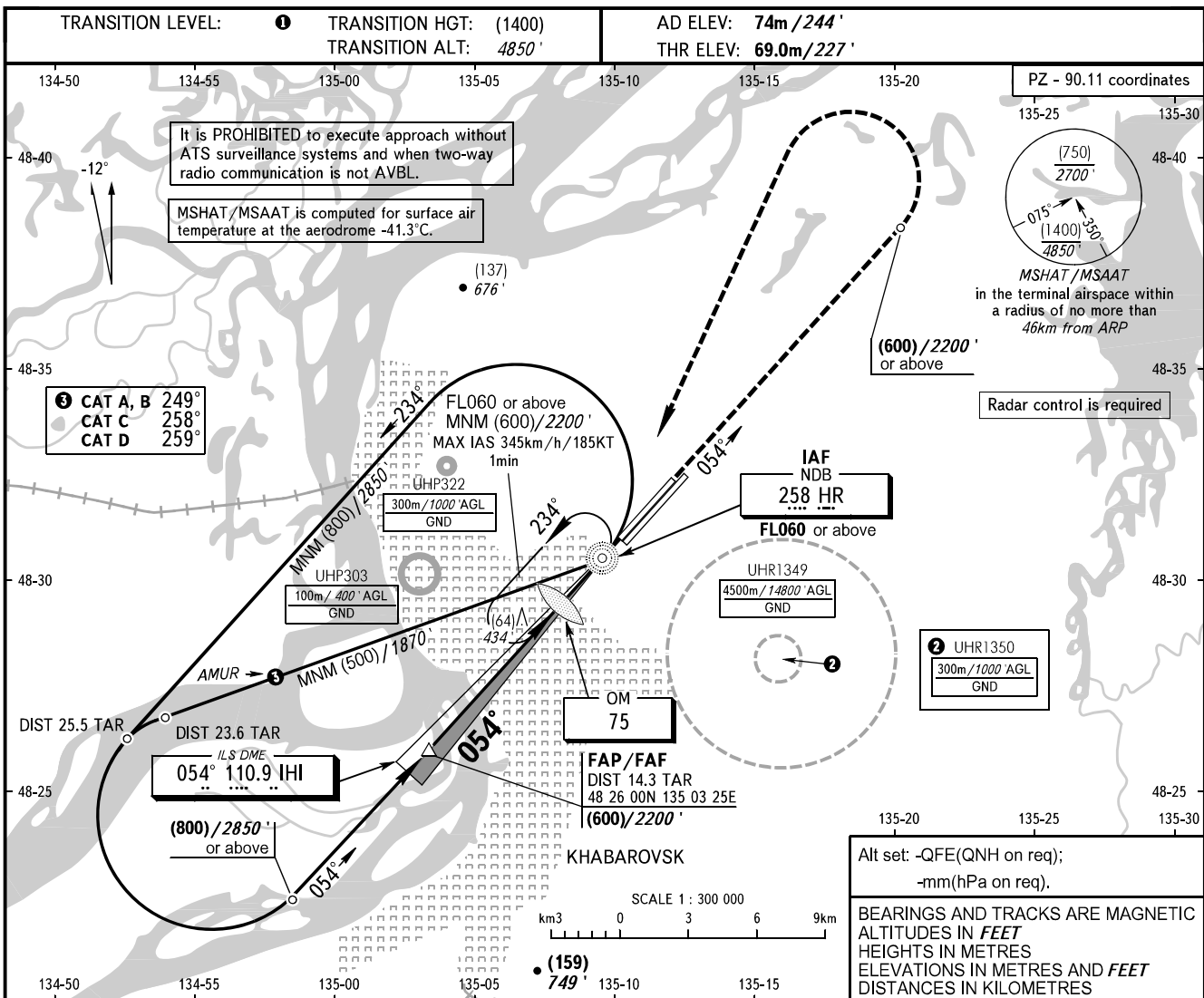


**INSTRUMENT
APPROACH
CHART - ICAO**

APPROACH	125.200
RADAR	120.300
PRECISION	119.300
GROUND	121.800 By ATC

**KHABAROVSK, RUSSIA
NOVY
ILS Y CAT I/II, LOC Y RWY 05L**



OCA(H)		A	B	C	D	① TRANSITION LEVEL: - FL060 when QFE is 753mm mercury column (1004 hPa) or above; - FL070 when QFE is less than 753mm (1004 hPa) mercury column. NOTE: 1. MAPt at NDB HR. Timing not authorized for defining MAPt. 2. Turn before MAPt is PROHIBITED. 3. Visual manoeuvring is PROHIBITED.					
Straight-in Approach	CAT I	128(60) 420'	128(60) 420'	128(60) 420'	128(60) 420'						
	CAT II	(30) (100')	(30) (100')	(30) (100')	(30) (100')						
	LOC	210(145) 690'	210(145) 690'	210(145) 690'	210(145) 690'						
GROUND SPEED		km/h	150	180	210	240	270	300	330	360	390
		kt	81	97	113	130	146	162	178	194	211
RATE OF DESCENT		m/s	2.0	2.4	2.7	3.1	3.5	3.9	4.3	4.7	5.1
		ft/min	385	463	540	617	694	771	848	925	1002