

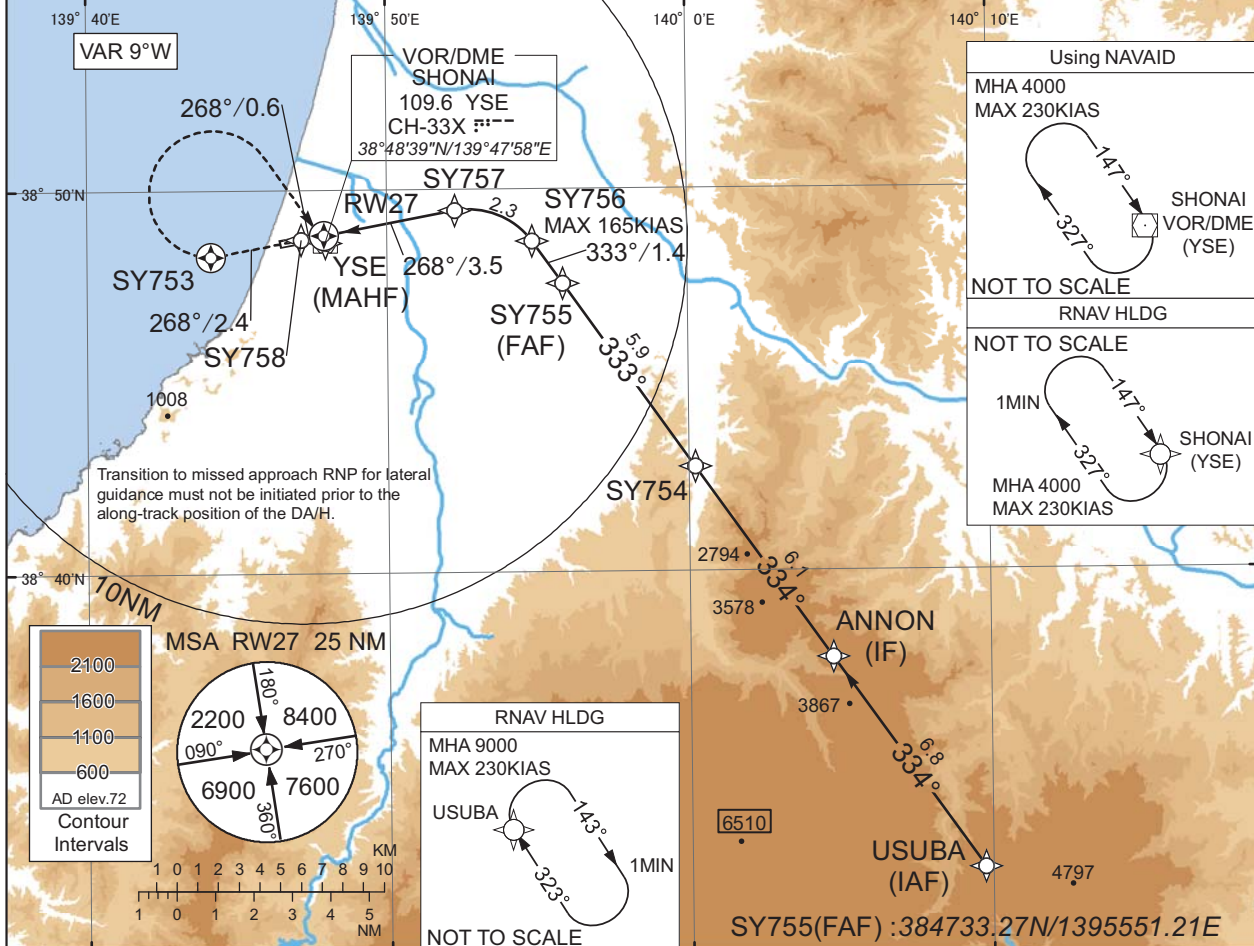
INSTRUMENT APPROACH CHART

RJSY / SHONAI

RNP Y RWY27(AR)

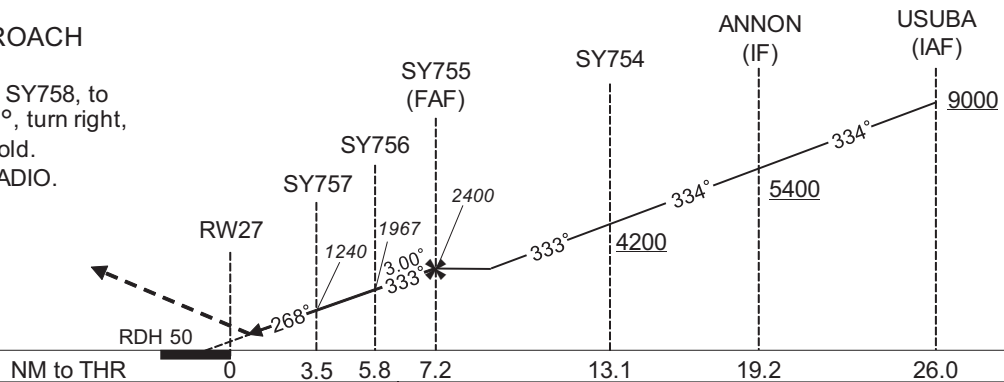
TOKYO CONTROL 132.3 - 300.2 123.775 - 276.9	RNP AR RF required.	SHONAI RADIO 118.8 AFIS provided by New Chitose Airport Office	NO RADAR
---	------------------------	---	----------

For uncompensated Baro-VNAV systems, procedure not authorized below -10°C / above 45°C



MISSED APPROACH

Climb to 4000FT, to SY758, to SY753 on track 268°, turn right, direct to YSE and hold.
Contact SHONAI RADIO.



Missed APCH climb gradient MNM 5.0%

CAT	THR elev. 86		AD elev. 72	
	RNP 0.12	RNP 0.30	RNP 0.12	RNP 0.30
	DA(H)	CMV	DA(H)	CMV
A	-	-	-	-
B	-	-	-	-
C	-	1400	-	1400
D	386(300)	1600	424(338)	1600

Authorization Required

MINIMA with Missed APCH climb gradient of 2.5% are not established.

CHANGE : HLDG pattern for using NAVAID.

INSTRUMENT APPROACH CHART

RJSY / SHONAI

RNP Y RWY27(AR)

Coding Table

Serial Number	Path Descriptor	Waypoint Identifier	Fly Over	Course °M(°T)	Magnetic Variation	Distance (NM)	Turn Direction	Altitude (FT)	Speed (KIAS)	VPA/ RDH (°/FT)	RNP Value
001	IF	USUBA	-	-	-8.8	-	-	+9000	-	-	-
002	TF	ANNON	-	334 (324.8)	-8.8	6.8	-	+5400	-	-	1.0
003	TF	SY754	-	334 (324.7)	-8.8	6.1	-	+4200	-	-	1.0
004	TF	SY755	-	333 (324.7)	-8.8	5.9	-	2400	-	-	1.0
005	TF	SY756	-	333 (324.6)	-8.8	1.4	-	1967	-165	-3.00	0.12 0.30
006	RF Center: SYRF2 r=2.01NM	SY757	-	-	-8.8	2.3	L	1240	-	-3.00	0.12 0.30
007	TF	RW27	Y	268 (259.5)	-8.8	3.5	-	136	-	-3.00/50	0.12 0.30
008	TF	SY758	-	268 (259.4)	-8.8	0.6	-	-	-	-	0.12 0.30
009	CF	SY753	Y	268 (259.4)	-8.8	2.4	-	-	-	-	1.0
010	DF	YSE	-	-	-8.8	-	R	4000	-	-	1.0

Path	Waypoint Identifier	Inbound Course °M(°T)	Magnetic Variation	Outbound Time (MIN)	Turn Direction	Minimum Altitude (FT)	Maximum Altitude (FT)	Speed (KIAS)	RNP Value
Hold	USUBA	323 (314.1)	-8.8	1.0 (-14000)	R	9000	FL140	-230 (-14000)	1.0
Hold	YSE	147 (137.9)	-8.8	1.0 (-14000)	R	4000	FL140	-230 (-14000)	1.0

Waypoint Coordinates

Waypoint Identifier	Coordinates	RF Arc Center Identifier	Coordinates
USUBA	383214.02N / 1400944.88E	SYRF2	384729.55N / 1395244.67E
ANNON	383745.37N / 1400445.25E		
SY754	384245.22N / 1400013.26E		
SY755	384733.27N / 1395551.21E		
SY756	384839.83N / 1395450.54E		
SY757	384928.52N / 1395216.49E		
RW27	384850.46N / 1394754.61E		
SY758	384843.80N / 1394708.93E		
SY753	384817.41N / 1394408.18E		
YSE	384838.81N / 1394757.51E		

CHANGE : PROC renamed.