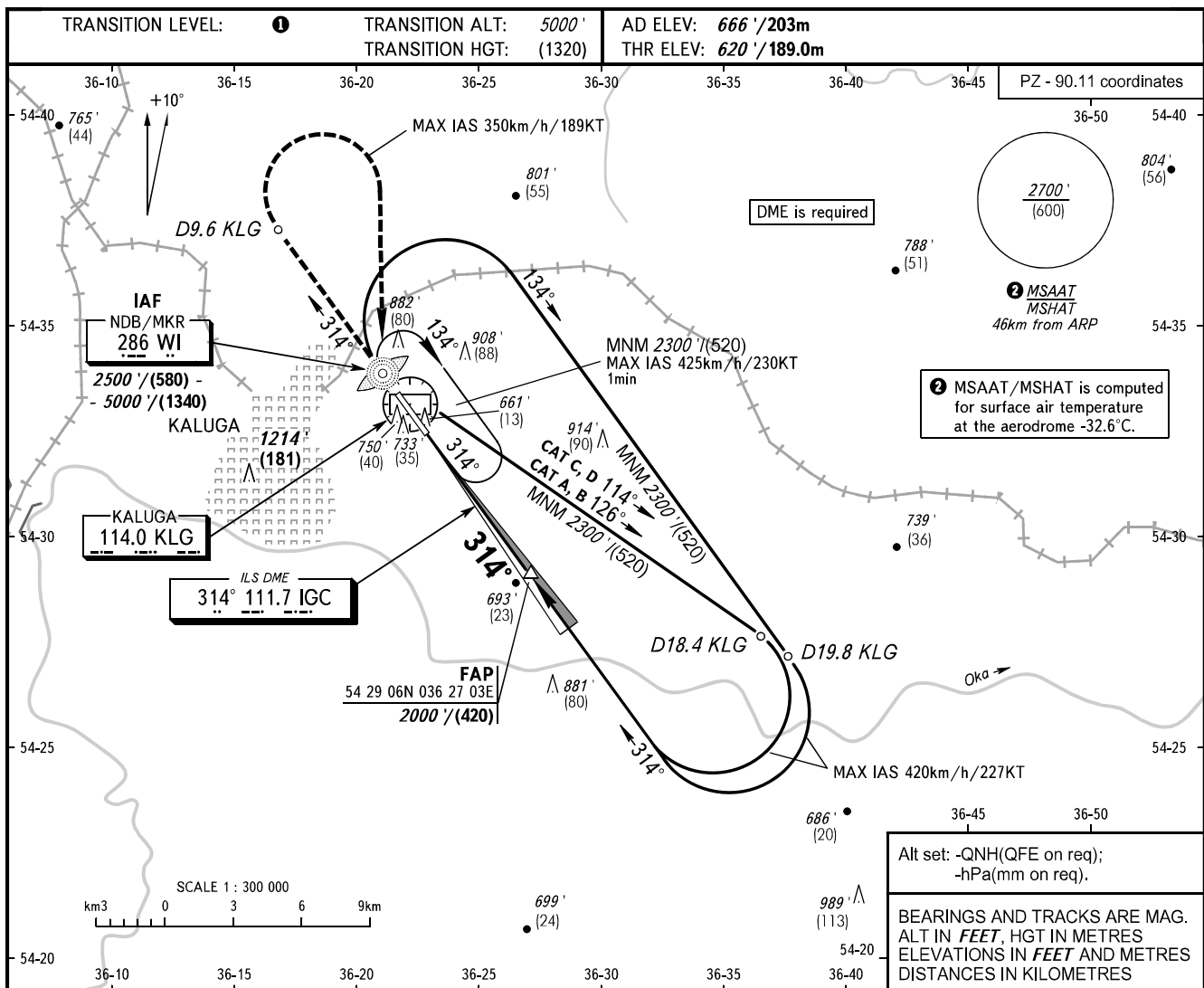


**INSTRUMENT
APPROACH
CHART - ICAO**

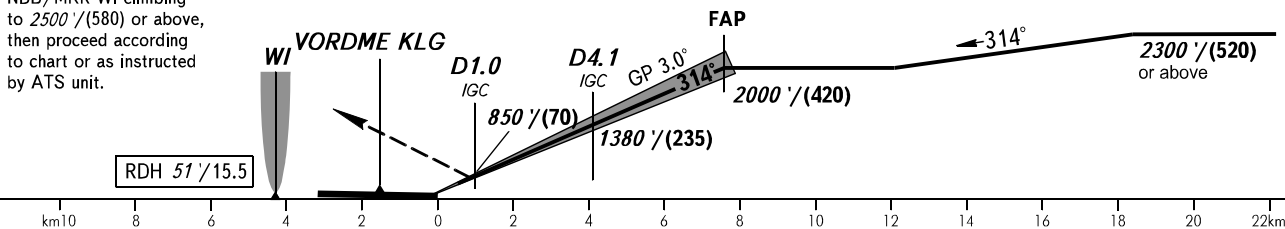
KALUGA TOWER 120.300

**KALUGA, RUSSIA
GRABTSEVO
ILS W CAT I RWY 31**



MISSED APPROACH

Climb straight ahead to D9.6 KLG (MAX IAS 350km/h/189KT), turn RIGHT to NDB/MKR WI climbing to 2500'/(580) or above, then proceed according to chart or as instructed by ATS unit.



OCA(H)		A	B	C	D						
Straight-in Approach	CAT I	761' (141') (43)	773' (153') (47)	783' (163') (50)	797' (177') (54)						
	Circling	1180' (520') (160)	1210' (550') (170)	1310' (650') (200)	1360' (700') (220)						
GROUND SPEED	km/h		150	180	210	240	270	300	330	360	390
	kt		81	97	113	130	146	162	178	194	211
RATE OF DESCENT	m/s		2.2	2.6	3.0	3.5	3.9	4.3	4.8	5.2	5.6
	ft/min		427	512	597	682	768	853	938	1024	1109

1. TRANSITION LEVEL:

- FL060 when QNH is 1013 hPa (760mm mercury column) or above;
- FL070 when QNH is 977 hPa (733mm mercury column) or above, but less than 1013 hPa (760mm mercury column);
- FL080 when QNH is less than 977 hPa (733mm mercury column).

WARNING:

1. Visual manoeuvring west of AD is PROHIBITED.
2. Zero range of DME IGC is indicated at RWY 31 THR.

