

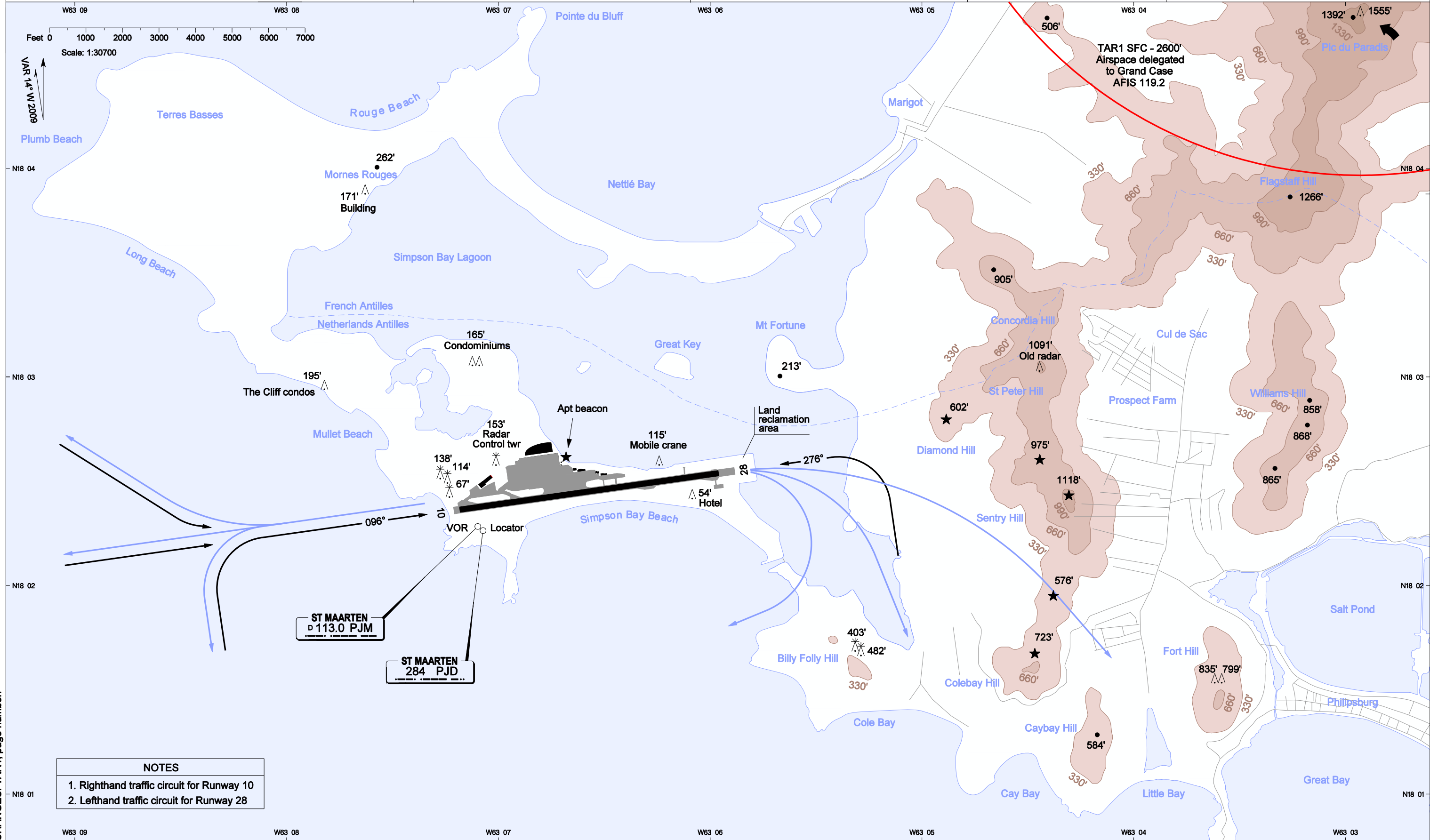
VISUAL APPROACH AND DEPARTURE CHART - ICAO

AERODROME ELEVATION: 14' / 4.2 M
ARP: N18 02 27.05 W063 06 34.26

JULIANA APPROACH: 128.95 (PRIMARY), 118.7
JULIANA TOWER: 118.7

TRANSITION LEVEL: FL65
TRANSITION ALTITUDE: 5000'

PRINCESS JULIANA INT'L (TNCM)
PHILIPSBURG, ST MAARTEN



Feet 0 1000 2000 3000 4000 5000 6000 7000
Scale: 1:30700

VAR 14° W 2009

- NOTES**
1. Righthand traffic circuit for Runway 10
 2. Lefthand traffic circuit for Runway 28

CHANGES: TAR1, page number.