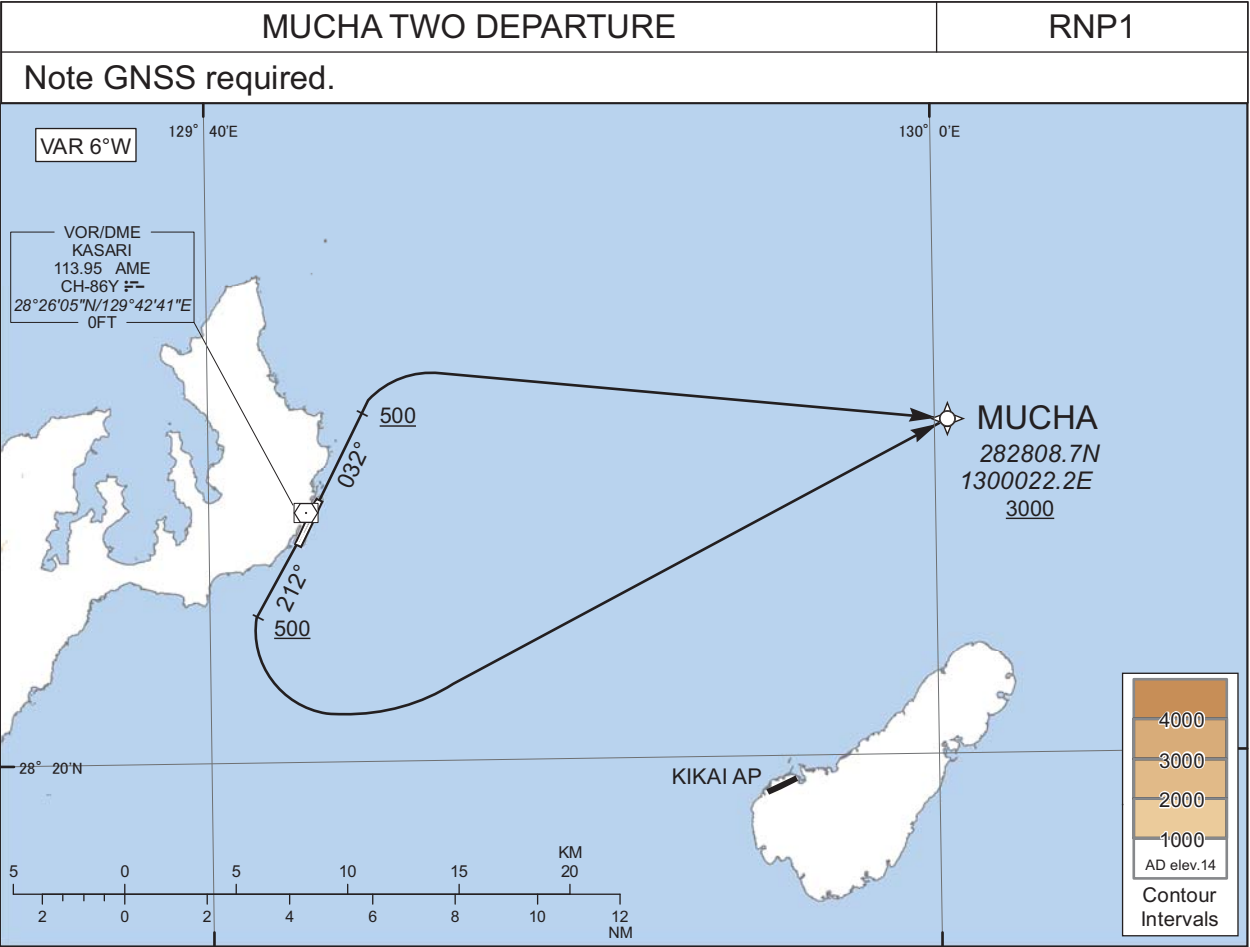


STANDARD DEPARTURE CHART -INSTRUMENT

RJKA / AMAMI

RNAV SID



RWY03 : Climb on HDG032° at or above 500FT, turn right direct to MUCHA at or above 3000FT.

RWY21 : Climb on HDG212° at or above 500FT, turn left direct to MUCHA at or above 3000FT.

Note RWY03 : 3.5% climb gradient required up to 500FT.
OBST ALT 197FT located at 1.1NM 015° FM end of RWY03.

CHANGE : Navigation Specification(Basic RNP1 → RNP1).

RWY03

Serial Number	Path Descriptor	Waypoint Identifier	Fly Over	Course °M(°T)	Magnetic Variation	Distance (NM)	Turn Direction	Altitude (FT)	Speed (KIAS)	Vertical Angle	Navigation Specification
001	VA	-	-	032 (025.8)	-6.4	-	-	+500	-	-	RNP1
002	DF	MUCHA	-	-	-6.4	-	R	+3000	-	-	RNP1

RWY21

Serial Number	Path Descriptor	Waypoint Identifier	Fly Over	Course °M(°T)	Magnetic Variation	Distance (NM)	Turn Direction	Altitude (FT)	Speed (KIAS)	Vertical Angle	Navigation Specification
001	VA	-	-	212 (205.8)	-6.4	-	-	+500	-	-	RNP1
002	DF	MUCHA	-	-	-6.4	-	L	+3000	-	-	RNP1